

PLEASE CHECK WWW.MOLEX.COM FOR LATEST PART INFORMATION

Part Number: [0901430036](#)
Status: **Active**
Overview: C-Grid III™
Description: 2.54mm (.100") Pitch C-Grid III™ Modular Crimp Housing, Dual Row, 36 Circuits

Documents:

[3D Model](#) [RoHS Certificate of Compliance \(PDF\)](#)
[Drawing \(PDF\)](#)

General

Product Family	Crimp Housings
Series	90143
Comments	No Buttons
Overview	C-Grid III™
Product Name	C-Grid III™

Physical

Breakaway	No
Circuits (maximum)	36
Circuits Detail	No Voided Circuits
Color - Resin	Black
Gender	Female
Glow-Wire Compliant	No
Keying to Mating Part	None
Lock to Mating Part	No
Material - Resin	PPO
Number of Rows	2
Packaging Type	Bag
Panel Mount	No
Pitch - Mating Interface (in)	0.100 In
Pitch - Mating Interface (mm)	2.54 mm
Pitch - Term. Interface (in)	0.100 In
Pitch - Term. Interface (mm)	2.54 mm
Polarized to Mating Part	No
Ports	1
Stackable	Yes
Temperature Range - Operating	-55°C to +105°C

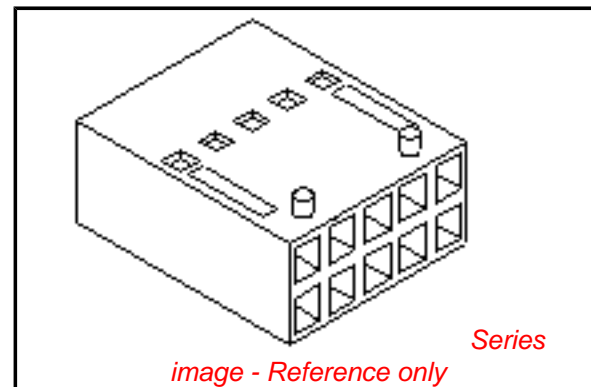
Electrical

Current - Maximum per Contact	3A
-------------------------------	----

Material Info

Reference - Drawing Numbers

Sales Drawing	SD-90143
---------------	----------



EU RoHS

ELV and RoHS Compliant
REACH SVHC
 Not Reviewed
Halogen-Free Status

China RoHS



Need more information on product environmental compliance?

Email productcompliance@molex.com
 For a multiple part number RoHS Certificate of Compliance, [click here](#)

Please visit the [Contact Us](#) section for any non-product compliance questions.

Search Parts in this Series

[90143Series](#)

Mates With

C-Grid III™ Header, Dual Row [90122](#) ,
[90130](#) , [90131](#)

Use With

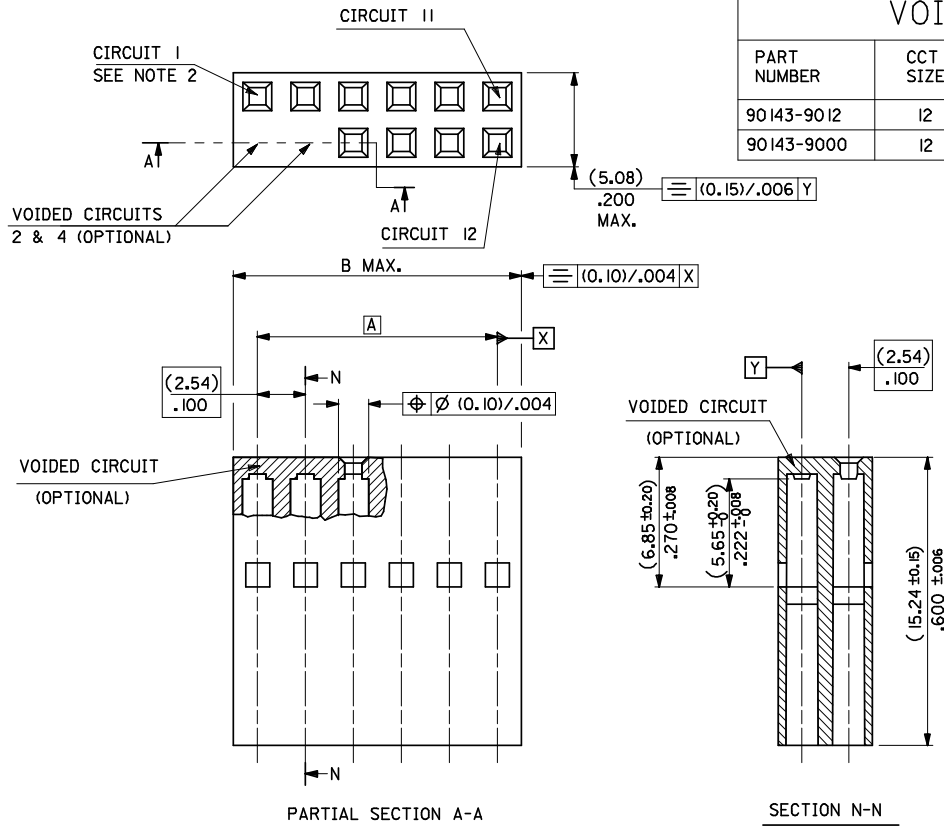
C-Grid III™ Crimp Terminal [90119](#)

VOIDED OPTIONS

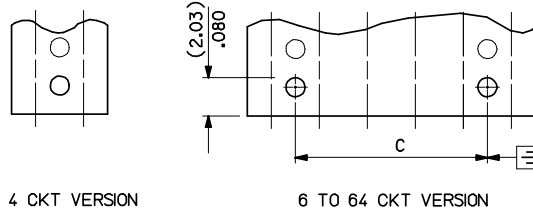
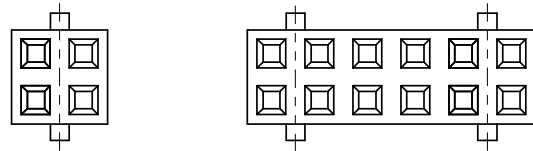
PART NUMBER	CCT SIZE	VOID LOCATIONS	FOR MISSING DIMS SEE PART NUMBER
90143-9012	12	2 & 4	90143-0012
90143-9000	12	2,4 & 7	90143-0012

NON-VOIDED OPTIONS

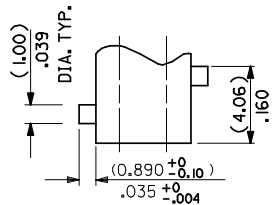
NO. OF CKTS	PART NUMBER		DIM A	DIM B	DIM C
	NO BUTTONS	WITH BUTTONS			
4	90143-0004	90143-0104	(2.54)/0.100	(5.08)/0.200	---
6	90143-0006	90143-0106	(5.08)/0.200	(7.62)/0.300	(2.54)/0.100
8	90143-0008	90143-0108	(7.62)/0.300	(10.16)/0.400	(5.08)/0.200
10	90143-0010	90143-0110	(10.16)/0.400	(12.70)/0.500	(7.62)/0.300
12	90143-0012	90143-0112	(12.70)/0.500	(15.24)/0.600	(10.16)/0.400
14	90143-0014	90143-0114	(15.24)/0.600	(17.78)/0.700	(12.70)/0.500
16	90143-0016	90143-0116	(17.78)/0.700	(20.32)/0.800	(15.24)/0.600
18	90143-0018	90143-0118	(20.32)/0.800	(22.86)/0.900	(17.78)/0.700
20	90143-0020	90143-0120	(22.86)/0.900	(25.40)/1.000	(20.32)/0.800
22	90143-0022	90143-0122	(25.40)/1.000	(27.94)/1.100	(22.86)/0.900
24	90143-0024	90143-0124	(27.94)/1.100	(30.48)/1.200	(25.40)/1.000
26	90143-0026	90143-0126	(30.48)/1.200	(33.02)/1.300	(27.94)/1.100
28	90143-0028	90143-0128	(33.02)/1.300	(35.56)/1.400	(30.48)/1.200
30	90143-0030	90143-0130	(35.56)/1.400	(38.10)/1.500	(33.02)/1.300
32	90143-0032	90143-0132	(38.10)/1.500	(40.64)/1.600	(35.56)/1.400
34	90143-0034	90143-0134	(40.64)/1.600	(43.18)/1.700	(38.10)/1.500
36	90143-0036	90143-0136	(43.18)/1.700	(45.72)/1.800	(40.64)/1.600
38	90143-0038	90143-0138	(45.72)/1.800	(48.26)/1.900	(43.18)/1.700
40	90143-0040	90143-0140	(48.26)/1.900	(50.80)/2.000	(45.72)/1.800
42	90143-0042	90143-0142	(50.80)/2.000	(53.34)/2.100	(48.26)/1.900
44	90143-0044	90143-0144	(53.34)/2.100	(55.88)/2.200	(50.80)/2.000
46	90143-0046	90143-0146	(55.88)/2.200	(58.42)/2.300	(53.34)/2.100
48	90143-0048	90143-0148	(58.42)/2.300	(60.96)/2.400	(55.88)/2.200
50	90143-0050	90143-0150	(60.96)/2.400	(63.50)/2.500	(58.42)/2.300
52	90143-0052	90143-0152	(63.50)/2.500	(66.04)/2.600	(60.96)/2.400
54	90143-0054	90143-0154	(66.04)/2.600	(68.58)/2.700	(63.50)/2.500
56	90143-0056	90143-0156	(68.58)/2.700	(71.12)/2.800	(66.04)/2.600
58	90143-0058	90143-0158	(71.12)/2.800	(73.66)/2.900	(68.58)/2.700
60	90143-0060	90143-0160	(73.66)/2.900	(76.20)/3.000	(71.12)/2.800
62	90143-0062	90143-0162	(76.20)/3.000	(78.74)/3.100	(73.66)/2.900
64	90143-0064	90143-0164	(78.74)/3.100	(81.28)/3.200	(76.20)/3.000



NO POLARISING BUTTON VERSION (90143-0** VERSION)



POLARISING BUTTON VERSION (90143-*1** VERSION)



NOTES:

- MATERIAL: POLYPHENYLENE OXIDE 94 VI COLOUR BLACK.
- 12 CIRCUIT PART SHOWN AS EXAMPLE
- PRODUCT SPECIFICATION: PS-99020-0001

90143 - x x x x

- INDICATES No. OF CIRCUITS
- INDICATES No. OF POLARISING BUTTONS
0 -- NO BUTTONS
1 -- WITH BUTTONS (4 CKT - 2 BUTTONS)
(6 TO 64 CKT - 4 BUTTONS)
- INDICATES HOUSING TYPE
0 -- INDICATES NO VOIDED CIRCUITS
9 -- INDICATES VOIDED CIRCUIT OPTION

ADDED NOTE 3 EC NO: E2008-0466 DRWN: KIERMAN 2008/03/12 CHKD: 2008/03/18 APPR: BMAGUIRE 2008/03/18	QUALITY SYMBOLS ▽=0 ▽=0	GENERAL TOLERANCES (UNLESS SPECIFIED)		DIMENSION STYLE MM ONLY		SCALE 5:1	DESIGN UNITS METRIC	THIRD ANGLE PROJECTION	
		4 PLACES ± --- INCH 3 PLACES ± --- ± --- 2 PLACES ± --- ± .004 1 PLACE ± 0.1 ± ---	DRAWN BY DB 1987/10/06	DATE 1987/10/06	TITLE C-GRID MODR CRP HSG DR W/O POL BTTN		APPROVED BY JDENNEHY 2005/08/31	DATE 2005/08/31	Molex MOLEX INCORPORATED
DRAFT WHERE APPLICABLE MUST REMAIN WITHIN DIMENSIONS		MATERIAL NO. SEE CHART		DOCUMENT NO. SD-90143		SHEET NO. 1 OF 1		THIS DRAWING CONTAINS INFORMATION THAT IS PROPRIETARY TO MOLEX INCORPORATED AND SHOULD NOT BE USED WITHOUT WRITTEN PERMISSION	