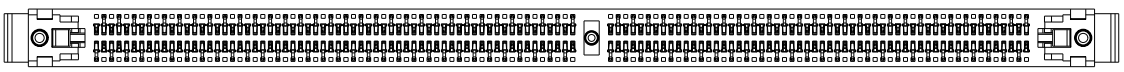
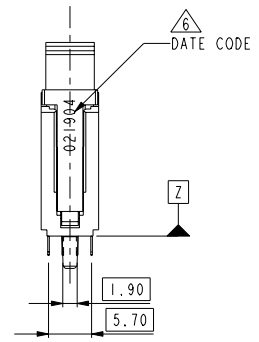
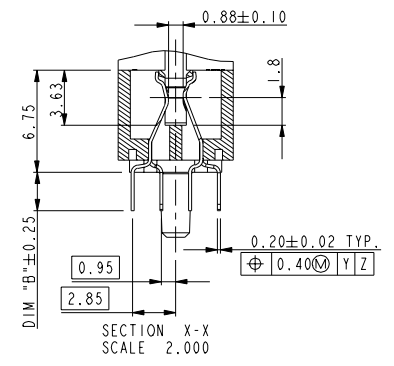
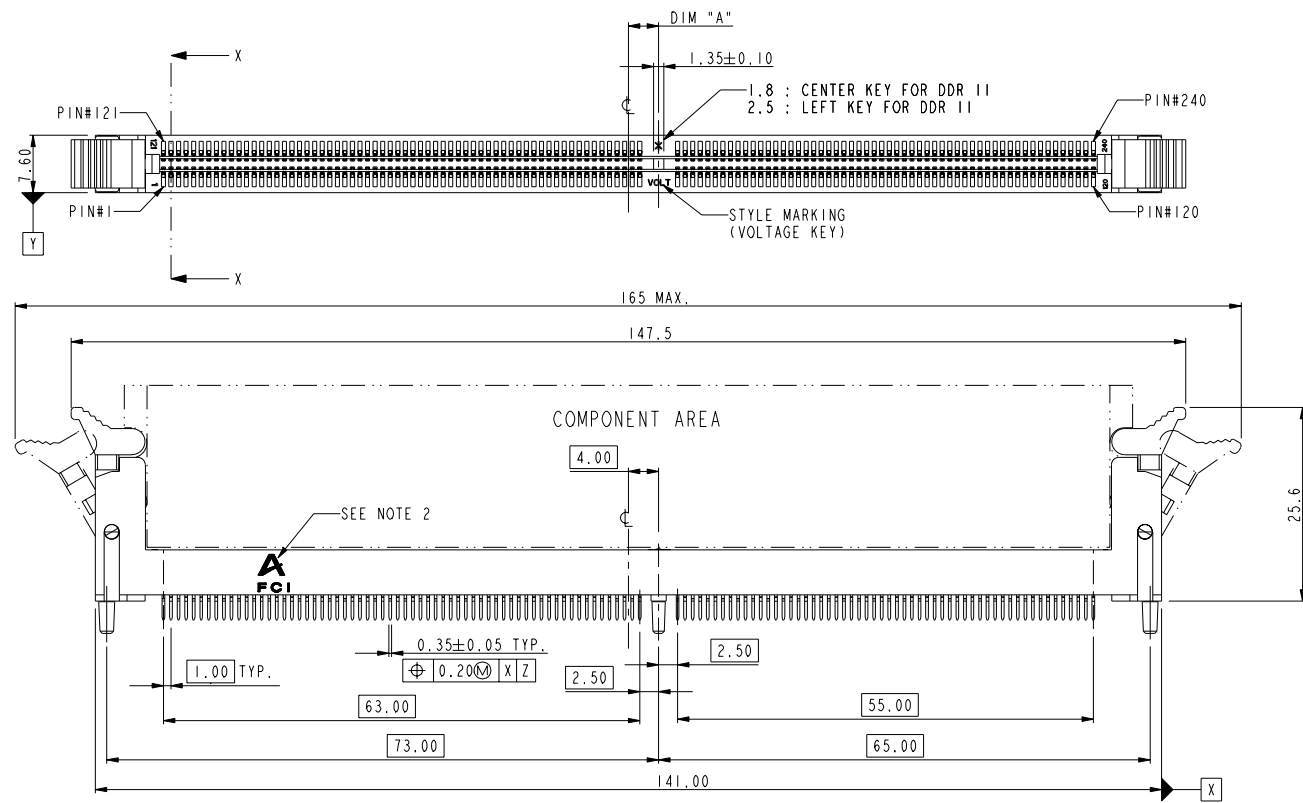


FCI CONFIDENTIAL



This document is the property of and embodies CONFIDENTIAL and PROPRIETARY information of FCI. No part of the information shown on this document may be used in any way or disclosed to others without the written consent of FCI. Copyright FCI.

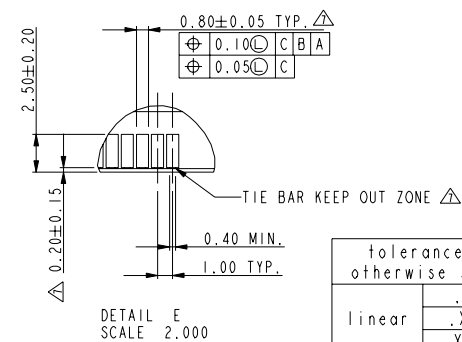
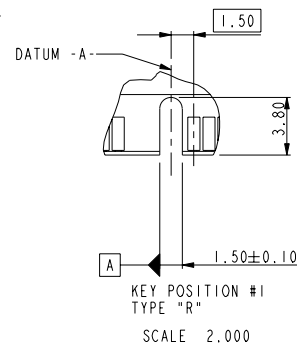
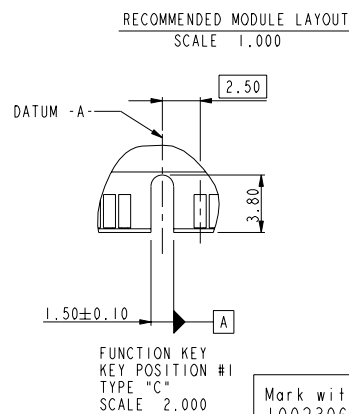
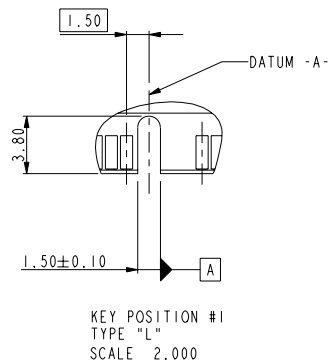
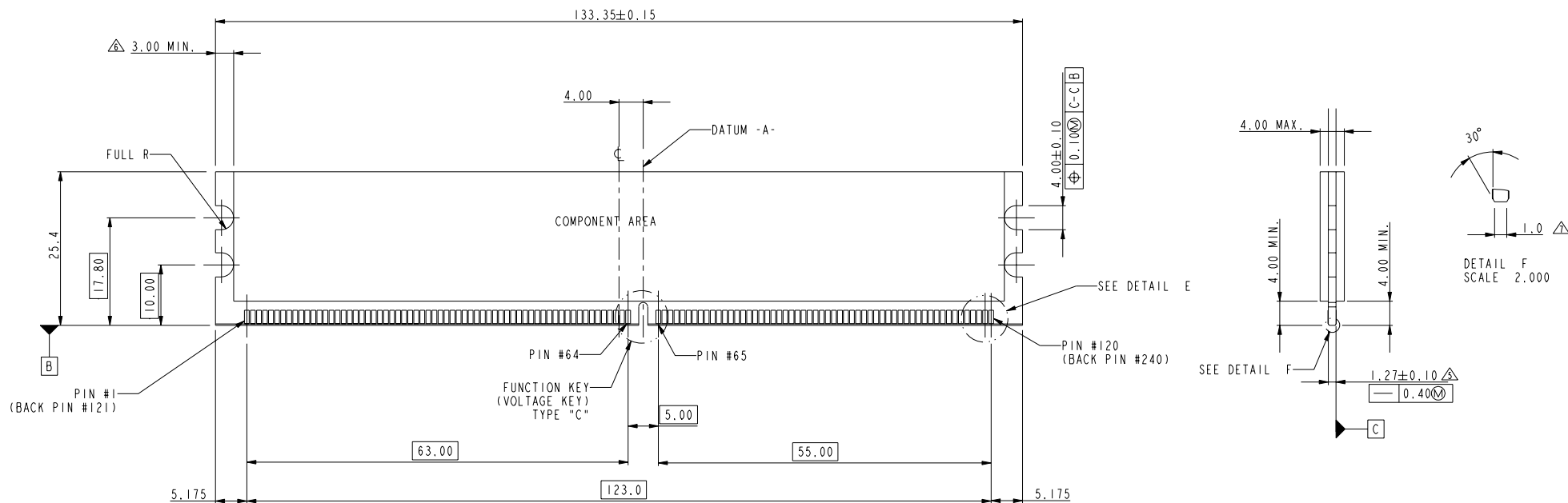
PRODUCT NO.
10023061-XXXX



PART NO.	DIM "A"	DESCRIPTION
10023061-1****	4.00	1.8V
10023061-2****	3.00	2.5V
10023061-3****	5.00	X.XV

Mark with 10023061 REV. in area indicated by X.			
rev	ecn no	dr	date
N	DG06-0328	C S	10/08/06

Material *			Spec ref			
Mat code		✓	tolerance	projection	MM 	
Heattreat						
Plating/Finish						
Dr	MAGGIE WU	02/17/03	size A4 Scale 0.500			
Eng	JEFF. HSIEH	02/17/03				Product family
Chr	JEFF. HSIEH	02/17/03	Model Name	ECN DG06-0328		
Appr	JENN TSAO	02/17/03	Model Revision	I	REL Level	
			title DDR II 240P PLASTIC POST. ASS'Y		dwg no 10023061	Rev. N
Pro/E file		catalog	PDM- Rev:N			
STATUS *			CUSTOMER DRAWING		sheet 1 of 4	
Released			Printed Jan 23 2001			



tolerance unless otherwise specified	
linear	.X ± .38 .XX ± .25 .XXX ± .13
angles	0° ± 2°

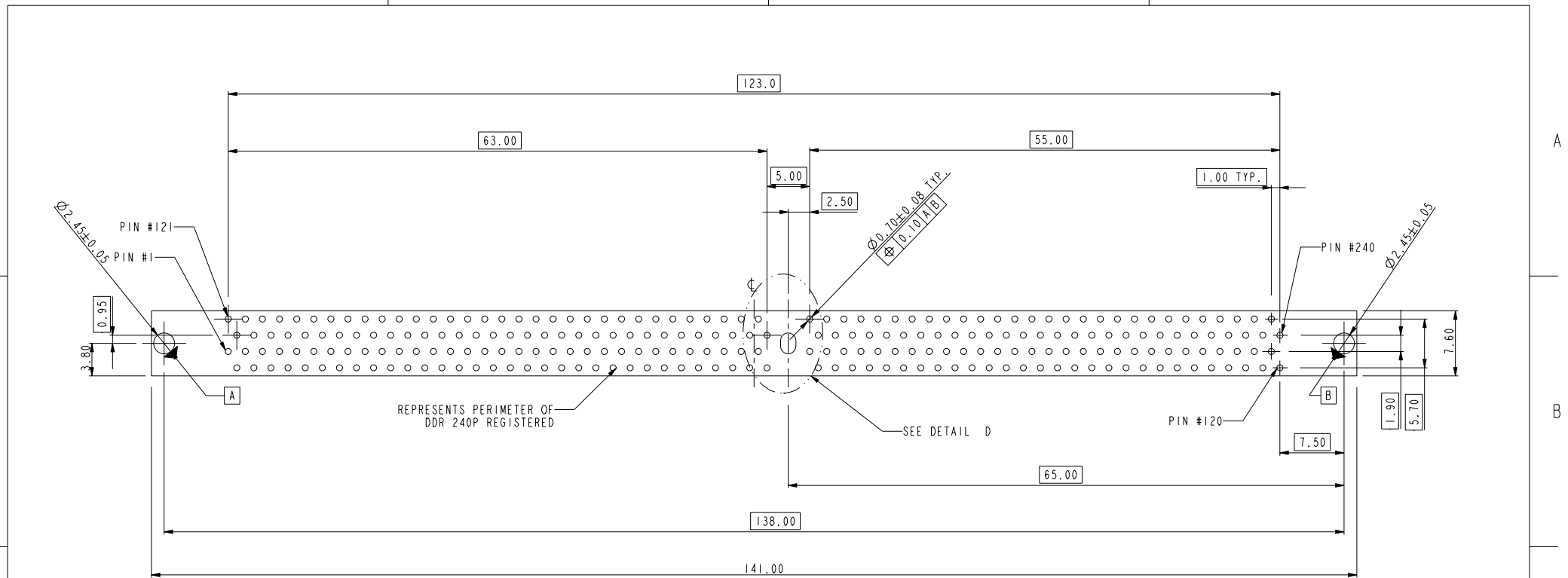
TYPE "R"	X.X VOLTAGE
TYPE "L"	2.5 VOLTAGE
TYPE "C"	1.8 VOLTAGE
SUB KEY POS #1	DESCRIPTION

TOLERANCES UNLESS OTHERWISE SPECIFIED	
L INEAR	0.X ±0.3 0.XX ±0.15 0.XXX ±0.100
ANGULAR	0° ±2°

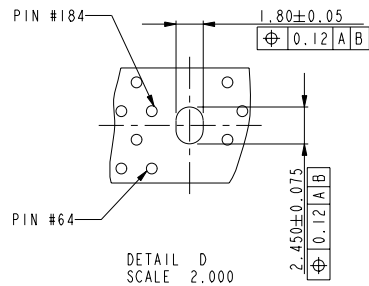
Mark with
10023061
REV. M
in area indicated
by X....

rev	ecn no	dr	date
N	-	-	-
-	-	-	-
-	-	-	-

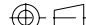

Material		Spec ref	
Mat code		tolerance	
Heat treat		projection	
Plating/Finish		size	
Dr	MAGGIE WU	02/17/03	Product family
Eng	*	02/17/03	Model Name
Chr	JEFF HSIEH	02/17/03	Model Revision
Appr	JEFF HSIEH	02/17/03	REL Level
title		Scale	
DDR II 240P V/T PLASTIC POST. ASS'Y		A4	
Pro/E file		ECN	
catalog		DG06-0328	
dwg no		REL Level	
10023061		CONCEPT	
Rev.		N	



RECOMMENDED CIRCUIT BOARD HOLE LAYOUT



tolerance unless otherwise specified	
linear	.X ± .38
	.XX ± .25
	.XXX ± .13
angles	0° ± 2°

Material *			Spec ref			
Mat code			✓	tolerance	projection	 MM
Heat treat						
Plating/Finish						
Dr	MAGGIE WU	02/17/03			size A4	Scale 0.500
Eng	JEFF.HSIEH	02/17/03	Product family			
Chr	JEFF.HSIEH	02/17/03	Model Name		ECN	DG06-0328
Appr	JENN TSAO	02/17/03	Model Revision I		REL Level	
		title DDR II 240P V/T PLASTIC POST. ASS'Y			dwg no 10023061	Rev. N
Pro/E file	catalog	PDM: Rev:N			CUSTOMER DRAWING	sheet 3 of 4



10023061 - □ □ □ □ □

STYLE : MECHANICAL KEYING

1 : 1.8 VOLT. W/ CENTER KEY#1
2 : 2.5 VOLT. W/ LEFT KEY#1
3 : X.X VOLT. W/ RIGHT KEY#1

COLOR OF HOUSING

0 : BLACK HOUSING
1 : BLUE HOUSING

TAIL LENGTH

CODE	DIM "B"
0	2.54
1	2.67
2	3.18

PLATING

CODE	CONTACT	SOLDERTAIL	UNDERPLATE
2	15u" (0.38um) MIN. GOLD	100u" (2.54um) MIN. TIN/LEAD	50u" (1.27um) MIN. NICKEL OVERALL
3	30u" (0.76um) MIN. GOLD		
4	3u" (0.076um) MIN. GOLD		
6LF	10u" (0.25um) MIN. GOLD	100u" (2.54um) MIN. 100% TIN	50u" (1.27um) MIN. NICKEL OVERALL
7LF	15u" (0.38um) MIN. GOLD		
8LF	30u" (0.76um) MIN. GOLD		
9LF	3u" (0.076um) MIN. GOLD		


COLOR OF EJECTOR

0 : IVORY EJECTOR
2 : BLACK EJECTOR

NOTES:

- MATERIAL:
HOUSING: HIGH PERFORMANCE RESINS, GLASS FILLED UL94V-0 RATED.
EJECTOR: HIGH PERFORMANCE RESINS, GLASS FILLED UL94V-0 RATED.
TERMINAL: PHOSPHOR BRONZE
- FCI LOGO TO BE APPROXIMATELY LOCATED AS SHOWN ON PRINT.
- PRODUCT SPECIFICATION: GS-12-251.
- PACKAGING SPECIFICATION: GS-14-899.
- CARD THICKNESS APPLIES ACROSS TABS AND INCLUDES PLATING AND/OR METALIZATION.
- 3.00mm MINIMUM APPLIES TO BOTH 4.00mm WIDE NOTCH LENGTH AND COMPONENT KEEPOUT AREA.
- LEADING EDGE OF CONTACT PADS SPECIFIED BY THE KEEP OUT ZONE SHALL BE FREE OF BURRS AND EXTERNAL TIE BARS.
FOR OPTIMUM PERFORMANCE, THE TIE BAR IS TO BE ON AN INTERNAL LAYER SO THAT THE REMNANT CANNOT CAUSE CONTACT DAMAGE.
- THE DATE CODE IS SHOWN "MM-DD-YY".
- THIS PRODUCT MEETS EUROPEAN UNION DIRECTIVES AND OTHER COUNTRY REGULATIONS AS DESCRIBED IN GS-22-008.
- THE HOUSING WILL WITH STAND EXPOSURE TO 260°C PEAK TEMPERATURE FOR 10 SECONDS IN A WAVE SOLDER APPLICATION.

tolerance unless otherwise specified	
linear	.X ± .38
	.XX ± .25
	.XXX ± .13
angles	0° ± 2°

Material *			Spec ref		dwg no		0 ± 0.1	
Mat code			✓	tolerance	projection	MM		
Heat treat								
Plating/Finish								
Dr	MAGGIE WU	02/17/03				size	Scale	
Eng	JEFF.HSIEH	02/17/03	Product family			A4	0.500	
Chr	JEFF.HSIEH	02/17/03	Model Name			ECN	DG06-0328	
Appr	JENN TSAO	02/17/03	Model Revision			REL Level		
		title			dwg no		Rev	
		DDR II 240P V/T PLASTIC POST. ASS'Y			10023061		N	
Pro/E file		catalog			CUSTOMER DRAWING		sheet 4 of 4	