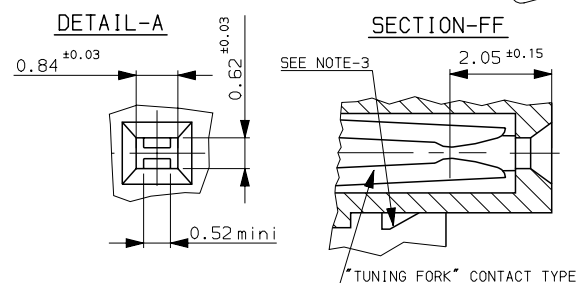


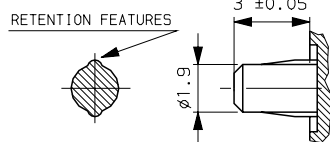
Part Number: HM1F59FDP181H6P

PERFORMANCE LEVEL = PL1 OF IEC-48B/424/CDV SPECIFICATION

CONTACT LOADING LOCATION SEE C-8626-0783-2



DETAIL OF PRESS-IN PEGS



GENERAL CHARACTERISTICS: SEE DRW C-8626-0000

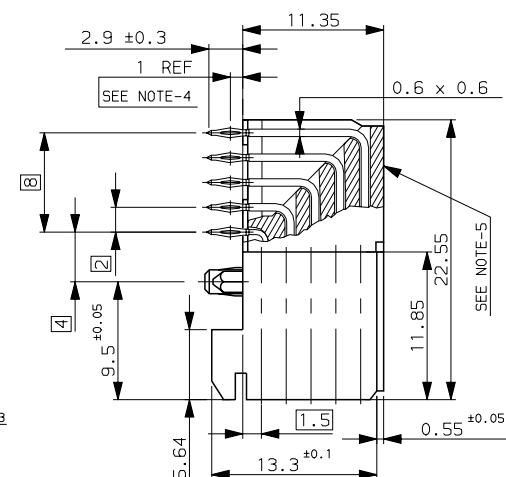
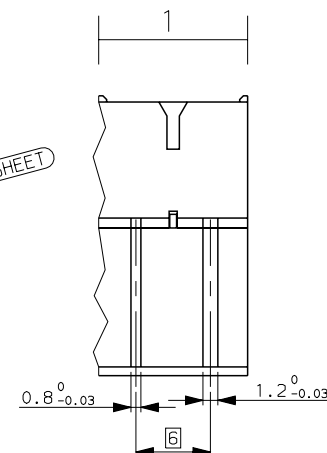
NOTE-1: PRESS-IN RETENTION PEG


NOTE-3: PLUG FOR CODING KEY FIXING

NOTE-4: EYE OF THE NEEDLE PRESS-FIT CTS TYPE

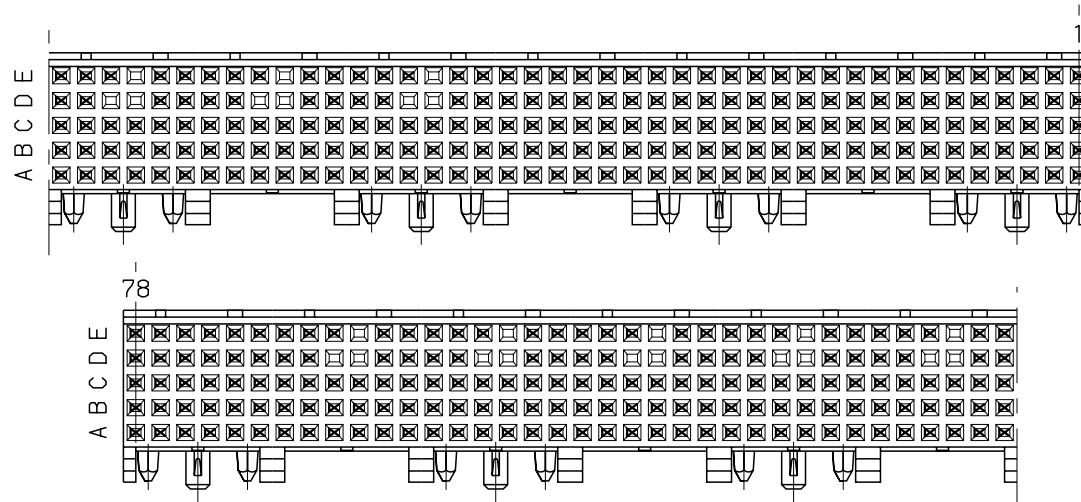
NOTE-5: FLAT ROCK INSERTION TOOLING IN PCB,

NOTE-6: METALIZED HOLE DIAMETER =  $\varnothing$  0.65-0.80



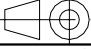

a	07/01/97	First issue	--
ISS	DATE	Latest modification by :	MOD N°
Designed by: ETIEMBRE date 07/01/97 Type of drawing: CLIENT			SHEET 1/1
TITLE : MILLIPACS-1 FEMALE 5 ROW-366 WAYS RIGHT ANGLE PRESS-FIT			
SCALE: 2.5			
		This document is the property of FRAMATOME CONNECTORS FRANCE It must not be reproduced or communicated without permission in writing from the owners	
FORMAT A3		DRG N° C-8626-0783-1	
		PROJECT D92D035	

# CONTACT LOADING LOCATION



## EMPTY CAVITIES

- A :
- B :
- C :
- D : 27/28/33/34/39/40/45/46/51/52/57/58/63/64/69/70
- E : 27/33/39/45/51/57/63/69

a	07/01/97	First issue	--
ISS	DATE	Latest modification by : --	MOD N°
Designed by: ETIEMBRE date 07/01/97		Type of drawing:	CLIENT
TITLE : MILLIPACS-1 FEMALE 5 ROW-366 WAYS RIGHT ANGLE PRESS-FIT			SHEET 1/1
SCALE: 2.5			
		FRAMATOME CONNECTORS FRANCE Rue Louis Breguet - BP 05 72024 LE MANS Cedex Tel. (33)02.43.78.34.00	
This document is the property of FRAMATOME CONNECTORS FRANCE It must not be reproduced or communicated without permission in writing from the owners			
FORMAT	DRG N°		PROJECT
A3	C-8626-0783-2		D92D035