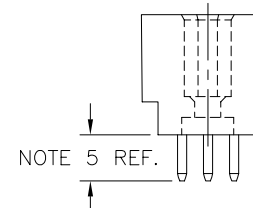
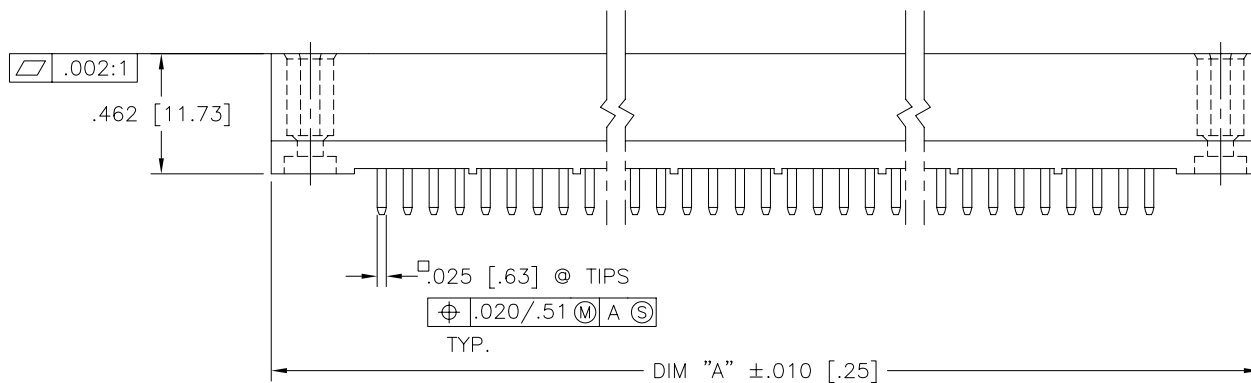
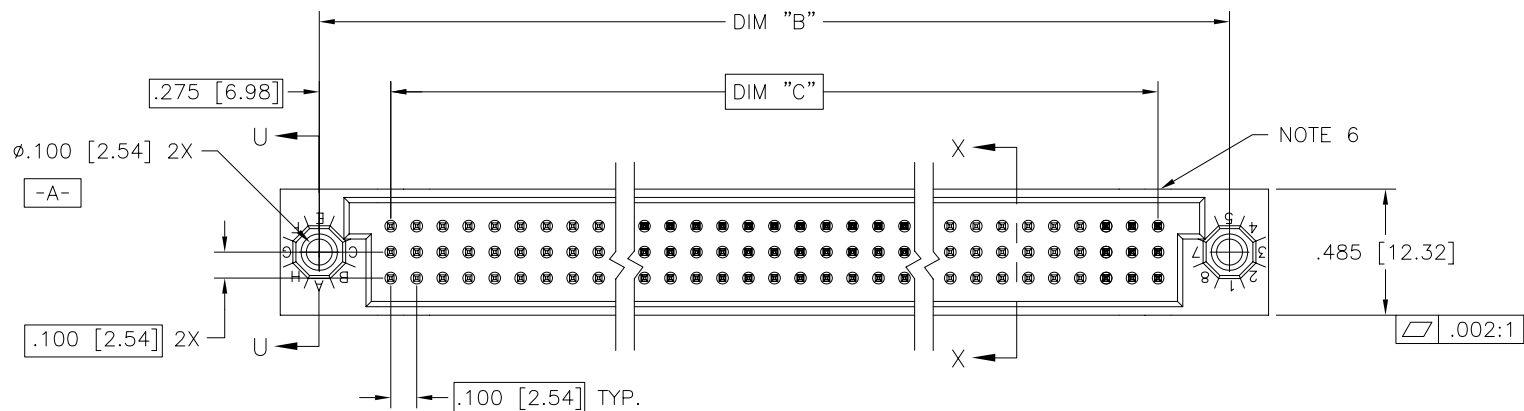




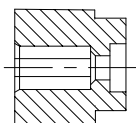
PRODUCT NUMBER
SEE NOTE 1



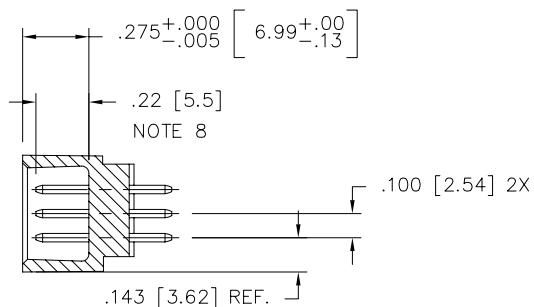
mat'l. code				surface ISO 1302 ✓		tolerance ISO 406 ISO 1101		projection 		product family HPC													
				tolerances unless otherwise specified						title													
ltr		ecn no		dr		date		angles		linear		.XX±.01/.3		INCH/MM		3 ROW VERTICAL HEADER							
A		V50356		GIP		3/15/95										S.T.B., 0 G.P., HI-DURABILITY							
B		V91230		DLW		6/21/99																	
C		V00278		JWS		2/4/00		0°±2'								scale 1:1							
D		M06-0255		AGS		7/7/06		dr		G. PETERS		3/15/95				dwg no		sheet 1 of 2		size			
								enrg		J. AFTON		3/15/95				50893		A3					
								chr		J. AFTON		3/15/95											
								appd		S. CLARK		3/15/95											
sheet index		revision sheet		D		D										type		Product		Customer		Drawing	
				1		2																	

form: A3

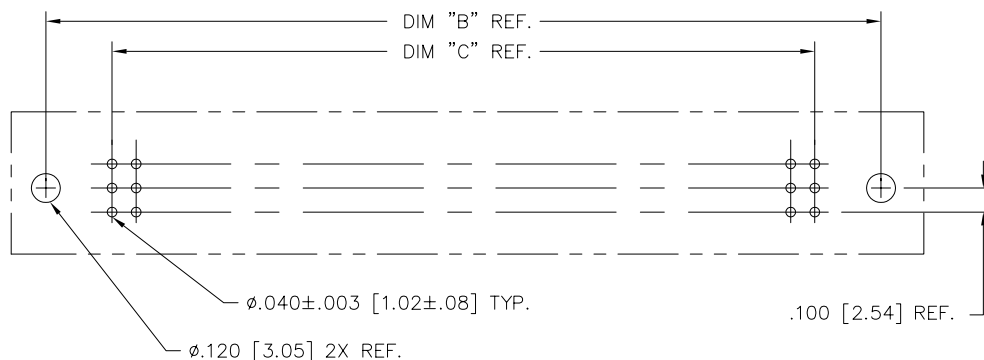
PRODUCT NUMBER	DIM.	LENGTH FORMULAS
SEE NOTE 1	DIM "A"	.100/2.54 x NO. OF COLUMNS +.75/19.1
	DIM "B"	.100/2.54 x NO. OF COLUMNS +.450/11.43
	DIM "C"	.100/2.54 x NO. OF COLUMNS -.100/2.54



SECTION U-U



SECTION X-X



RECOMMENDED PCB LAYOUT
(ALL HOLES LOCATED ON .100/2.54 GRID
UNLESS OTHERWISE SPECIFIED)

NOTES:

- PRODUCT NUMBERING CODE:
50893 - X YYY Z
TAIL LENGTH (NOTE 5)
NO. OF POSITIONS (NOTE 2)
PLATING (NOTE 4)
BASE NUMBER
- PRODUCT NUMBERING CODE FOR
SELECT LOAD PART NUMBERS:
50893 - XXYYY
SEQUENCE NUMBER
ALWAYS 'XX'
BASE NUMBER
- THIS PRODUCT IS CONFIGURED IN SIZES OF 6 thru 80
COLUMNS IN INCREMENTS OF ONE.
i.e.: 6,7,8,9,.....78,79,80.
- HOUSING MATERIAL: GLASS AND MINERAL FILLED
HIGH TEMP. THERMOPLASTIC. FLAME RETARDANT PER
UL94V-0. COLOR: BLACK.
PIN MATERIAL: PHOS BRONZE
- PLATING CONTACT AREA OPTIONS:
7 = 60u"/1.52u GXT
- TAIL LENGTH OPTIONS: (±.015/.38)
A = .177/4.5 G = .250/6.35
C = .533/13.54 J = .120/3.05
D = .733/18.62
- MANUFACTURERS NAME, PART NUMBER AND LOT CODE
TO APPEAR ON THIS SURFACE PER BUS-12-108.
- FOR DOCUMENTATION MENU, SEE BUS-01-057.
- REFERENCE 50804 FOR FIRST MATE LAST BREAK AVAILABLE
OPTIONS AND FOR SELECTIVELY LOADED HEADER WORKSHEET.

mat'l. code				surface ISO 1302 ✓	tolerance ISO 406 ISO 1101	projection INCH/MM	product family HPC
ltr	ecn	no	dr	date	tolerances unless otherwise specified		title
D					angles .XX±.01/.3	INCH/MM	3 ROW VERTICAL HEADER
					linear .XXX±.005/.13	scale 1:1	S.T.B., 0 G.P., HI-DURABILITY
					0°±2' .XXXX±.0020/.051		dwg no
			dr	G. PETERS	3/15/95		sheet2 of 2
			enr	J. AFTON	3/15/95		size
			chr	J. AFTON	3/15/95		A3
			appd	S. CLARK	3/15/95		type
sheet	revision						Product Customer Drawing
index	sheet						