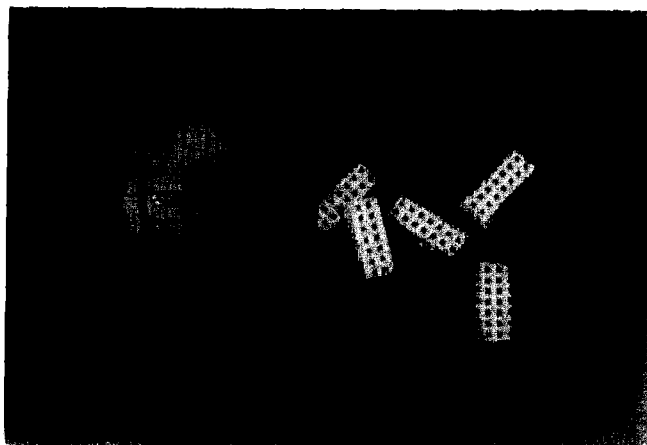


# 1.0 mm (.039") Surface Mount Connector Top/Bottom Entry



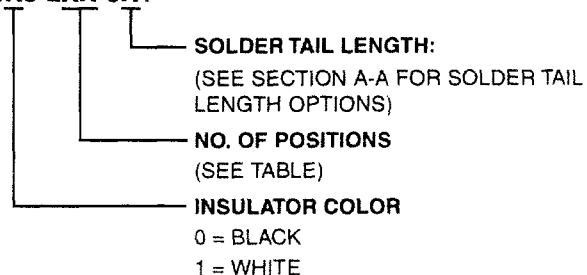
Methode's 1.0 mm Surface Mount Connectors are designed to satisfy both top and bottom entry requirements. The low connector height (1.75 mm max.) above board and 1.0 mm grid provide maximum space utilization for small OEM packages. The availability of 4 through 60 circuits, as well as industry standard platings, allows for vast design flexibility.

## Specifications

- Contact Material:** Beryllium Copper
- Insulator Material:** 46 Nylon, UL 94V-0
- Operating Temperature:** -55°C to +125°C
- Current Rating:** .5 Amp/Contact
- Voltage Rating:** 250 VAC
- Insertion Force:** 8 oz. (227 grams) max. (initial)
- Withdrawal Force:** 1 oz. (28 grams) min.
- Contact Resistance:** 20 Milliohms max.

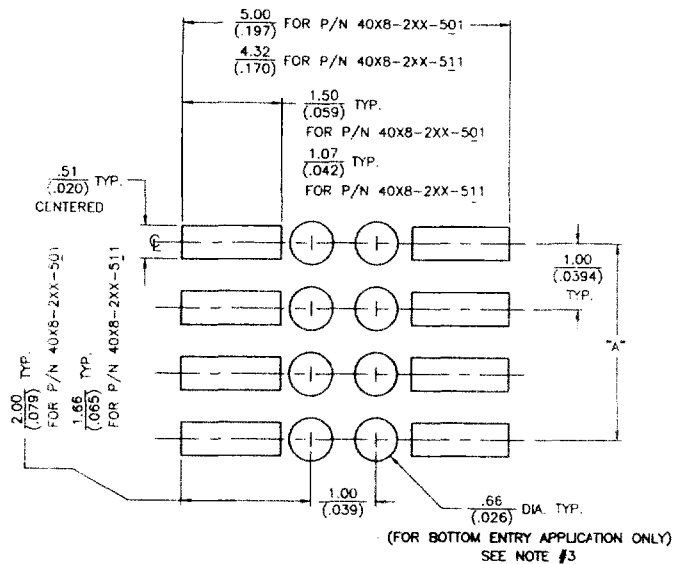
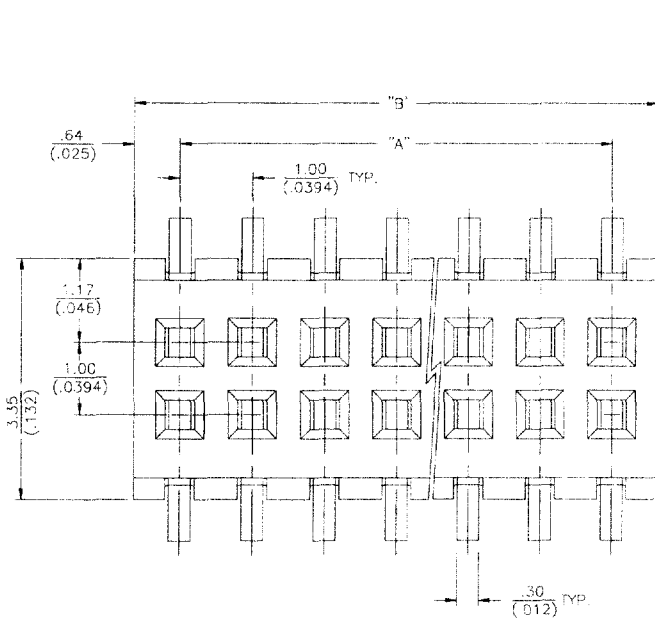
## PART NUMBER LEGEND

**40X8-2XX-5X1**

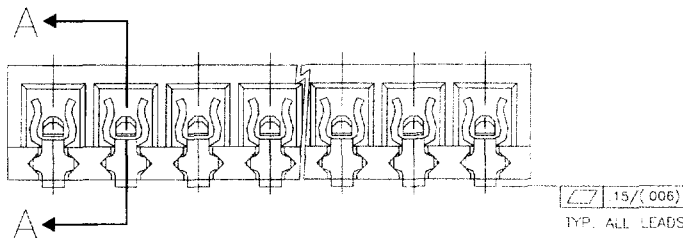


PART NUMBER	NO. OF CIRCUITS	DIM. A	DIM. B
40X8-202-5X1	4	1.00 (.039)	2.27 (.089)
40X8-203-5X1	6	2.00 (.079)	3.27 (.129)
40X8-204-5X1	8	3.00 (.118)	4.27 (.168)
40X8-205-5X1	10	4.00 (.157)	5.27 (.207)
40X8-206-5X1	12	5.00 (.197)	6.27 (.247)
40X8-207-5X1	14	6.00 (.236)	7.27 (.286)
40X8-208-5X1	16	7.00 (.276)	8.27 (.326)
40X8-209-5X1	18	8.00 (.315)	9.27 (.365)
40X8-210-5X1	20	9.00 (.354)	10.27 (.404)
40X8-211-5X1	22	10.00 (.394)	11.27 (.444)
40X8-212-5X1	24	11.00 (.433)	12.27 (.483)
40X8-213-5X1	26	12.00 (.472)	13.27 (.522)
40X8-214-5X1	28	13.00 (.512)	14.27 (.562)
40X8-215-5X1	30	14.00 (.551)	15.27 (.601)
40X8-216-5X1	32	15.00 (.591)	16.27 (.641)
40X8-217-5X1	34	16.00 (.630)	17.27 (.680)
40X8-218-5X1	36	17.00 (.669)	18.27 (.719)
40X8-219-5X1	38	18.00 (.709)	19.27 (.759)
40X8-220-5X1	40	19.00 (.748)	20.27 (.798)
40X8-221-5X1	42	20.00 (.787)	21.27 (.837)
40X8-222-5X1	44	21.00 (.827)	22.27 (.877)
40X8-223-5X1	46	22.00 (.866)	23.27 (.916)
40X8-224-5X1	48	23.00 (.905)	24.27 (.956)
40X8-225-5X1	50	24.00 (.945)	25.27 (.995)
40X8-226-5X1	52	25.00 (.984)	26.27 (1.034)
40X8-227-5X1	54	26.00 (1.024)	27.27 (1.074)
40X8-228-5X1	56	27.00 (1.063)	28.27 (1.113)
40X8-229-5X1	58	28.00 (1.102)	29.27 (1.152)
40X8-230-5X1	60	29.00 (1.142)	30.27 (1.192)

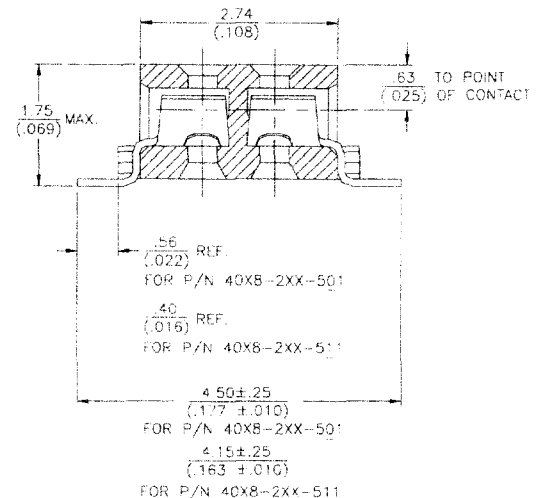
# 1.0 mm (.039") Surface Mount Connector Top/Bottom Entry



RECOMMENDED P.C. BOARD LAYOUT  
(COMPONENT SIDE SHOWN)



ALL DIMENSIONS ARE IN MILLIMETERS  
DIMENSIONS IN ( ) ARE IN INCHES



SECTION A-A

**NOTES:**

- 1) INSULATOR MATERIAL: 46 NYLON, UL 94V-0  
 COLOR: BLACK FOR P/N 4008-2XX-5X1  
 WHITE FOR P/N 4018-2XX-5X1  
 CONTACT MATERIAL: BERYLLIUM COPPER
- 2) CONTACT FINISH: .0076/(.000030) GOLD PLATE IN CONTACT AREA:  
 GOLD FLASH OVER .0013-.0038/(.000050-.000150) NICKEL  
 PLATE ALL OVER (-829)
- 3) RECOMMENDED P.C. BOARD THICKNESS FOR BOTTOM ENTRY APPLICATION IS 1.00/(.039); FOR BOTTOM ENTRY APPLICATION, USE HEADER PART NO. 410X-21-2XX-02.