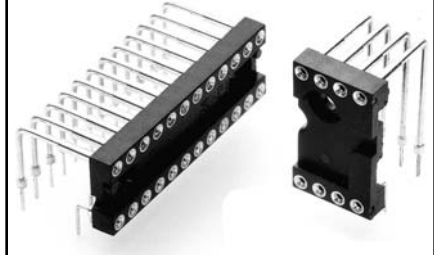


- For components to be mounted perpendicularly to the PCB, such as LED displays.
- Horizontal mount solder tails are available with either .300" (standard) or .100" row spacing.
- Horizontal mount uses M-M# 1103/0903, 1103/1610 or 1103/0904 pins. See page 135 & 136 for details.



| Total number of pins | | | | Quantity per tube | Horizontal Mount Ordering Information | |
|----------------------|-----|-----|-----|-------------------|---------------------------------------|-------------------|
| | A | B | C | | E=.300 | E=.100 |
| | 6 | 0.3 | 0.3 | | 0.4 | |
| 8 | 0.4 | 0.3 | 0.4 | | 299-93-308-10-001 | 299-93-308-11-001 |
| 10 | 0.5 | 0.3 | 0.4 | | 299-93-310-10-001 | 299-93-310-11-001 |
| 12 | 0.6 | 0.3 | 0.4 | 33 | 299-93-312-10-001 | 299-93-312-11-001 |
| 14 | 0.7 | 0.3 | 0.4 | 29 | 299-93-314-10-001 | 299-93-314-11-001 |
| 16 | 0.8 | 0.3 | 0.4 | 25 | 299-93-316-10-001 | 299-93-316-11-001 |
| 18 | 0.9 | 0.3 | 0.4 | 22 | 299-93-318-10-001 | 299-93-318-11-001 |
| 20 | 1.0 | 0.3 | 0.4 | 20 | 299-93-320-10-001 | 299-93-320-11-001 |
| 24 | 1.2 | 0.3 | 0.4 | 16 | 299-93-324-10-001 | 299-93-324-11-001 |
| 8 | 0.4 | 0.6 | 0.7 | 50 | 299-93-608-10-002 | |
| 10 | 0.5 | 0.6 | 0.7 | 40 | 299-93-610-10-002 | |
| 12 | 0.6 | 0.6 | 0.7 | 34 | 299-93-612-10-002 | |
| 14 | 0.7 | 0.6 | 0.7 | 28 | 299-93-614-10-002 | |
| 16 | 0.8 | 0.6 | 0.7 | 25 | 299-93-616-10-002 | |
| 18 | 0.9 | 0.6 | 0.7 | 22 | 299-93-618-10-002 | |
| 20 | 1.0 | 0.6 | 0.7 | 20 | 299-93-620-10-002 | |
| 22 | 1.1 | 0.6 | 0.7 | 18 | 299-93-622-10-002 | |
| 24 | 1.2 | 0.6 | 0.7 | 16 | 299-93-624-10-002 | |
| 26 | 1.3 | 0.6 | 0.7 | 15 | 299-93-626-10-002 | |
| 28 | 1.4 | 0.6 | 0.7 | 14 | 299-93-628-10-002 | |
| 30 | 1.5 | 0.6 | 0.7 | 13 | 299-93-630-10-002 | |
| 32 | 1.6 | 0.6 | 0.7 | 12 | 299-93-632-10-002 | |
| 36 | 1.8 | 0.6 | 0.7 | 11 | 299-93-636-10-002 | |
| 40 | 2.0 | 0.6 | 0.7 | 10 | 299-93-640-10-002 | |
| PLATING CODE = | | | | | | 93 |
| Sleeve (Pin) | | | | | | 200μ" Sn/Pb |
| Contact (Clip) | | | | | | 30μ" Au |