



## Non-Insulated Terminals Turret Hollow Miniature

Please refer to Figure 2010

Part No.	Board Thick	Mounting Hole Dia $+0.003$ $-0.001$	D Nom	L Nom	Swage Tool
2010AA	.016	.065	.063	.037	2010
2010A	.031	.065	.063	.053	2010
2010B	.062	.065	.063	.084	2010
2010C	.094	.065	.063	.115	2010
2010D	.125	.065	.063	.147	2010
2010T	.094	4-40 THREAD	4-40T	.125	2010

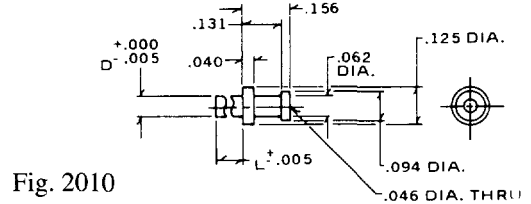


Fig. 2010

Please refer to Figure 2011

Part No.	Board Thick	Mounting Hole Dia $+0.003$ $-0.001$	D Nom	L Nom	Swage Tool
2011AA	.016	.075	.073	.037	2011
2011A	.031	.075	.073	.053	2011
2011B	.062	.075	.073	.084	2011
2011C	.094	.075	.073	.115	2011
2011D	.125	.075	.073	.147	2011

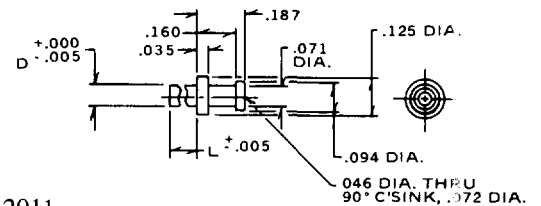


Fig. 2011

## Non-Insulated Terminals Feed-Thru Turret Miniature & Subminiature

Please refer to Figure 2501

Part No.	Board Thick	Mounting Hole Dia $+0.003$ $-0.001$	D Nom	L Nom	Swage Tool
2501A	.031	.092	.090	.031	2501
2501B	.062	.092	.090	.062	2501
2501C	.093	.092	.090	.093	2501
2501D	.125	.092	.090	.125	2501

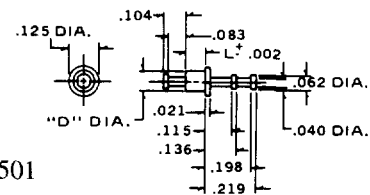


Fig. 2501

Please refer to Figure 2502

Part No.	Board Thick	Mounting Hole Dia $+0.003$ $-0.001$	D Nom	L Nom	Swage Tool
2502A	.031	.092	.090	.062	2502
2502B	.062	.092	.090	.093	2502
2502C	.093	.092	.090	.125	2502
2502D	.125	.092	.090	.156	2502

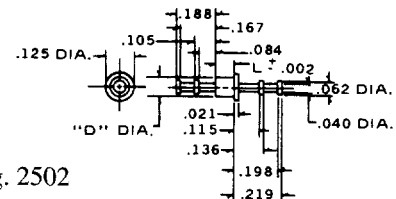


Fig. 2502

Please refer to Figure 2500

Part No.	Board Thick	Mounting Hole Dia $+0.003$ $-0.001$	D Nom	L Nom	Swage Tool
2500A	.031	.093	.091	.053	2500
2500B	.062	.093	.091	.084	2500
2500C	.094	.093	.091	.115	2500
2500D	.125	.093	.091	.147	2500

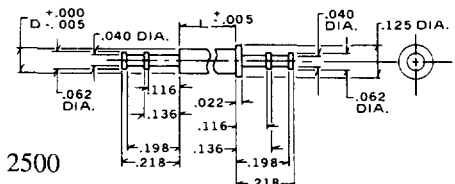


Fig. 2500

**Standard Plating Suffix to Part Number**  
See Page 93 for all plating options.

**Terminal**  
-1 (Ag over Cu)

TOLERANCE: .xxx ± .005, .xx ± .01 (ALL DIMS. BEFORE PLATING)