

BIAS TEES

0.04–18 GHz

SERIES EP

GENERAL INFORMATION

The EP Series bias tees are used to inject a D.C. current or voltage into an RF circuit without affecting the flow of RF through main transmission path. A circuit diagram of the device is shown in Fig. 1. The unit consists of a series capacitor plus a bias choke. Bias tees are supplied in four basic models.

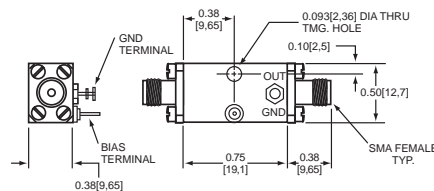
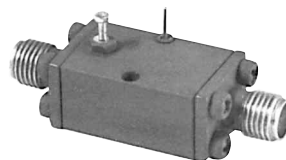
GENERAL SPECIFICATIONS

Frequency Range:	0.04–18GHz
RF Impedance:	50 Ohms
RF Power:	25 watts average, 2.0 KW peak
DC Requirement:	Bias Input 500 milliamps maximum (EP-62 200 mA maximum)
Operating Temperature:	–55°C to +85°C
Connectors:	SMA female

ELECTRICAL PERFORMANCE

Model No.	Frequency Range GHz	VSWR Maximum	C2 pF	C1 pF	L nH	Voltage Breakdown Volts, Minimum	Insertion Loss dB Maximum
EP-18	0.04-1.4	1.3	1000	1000	820	300	0.30
EP-25	1.0-5.0	1.4	15	100	60	300	0.30
EP-46	2.0-8.0	1.4	15	100	60	200	0.40
EP-62	4.0-18.0	1.5	22	100	18	200	0.50

KEY: Inches[Millimeters] .XX ±.03 .XXX ±.010 [.X ±0.8 .XX ±0.25]



SERIES EP

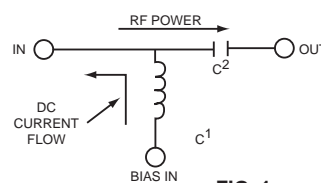


FIG. 1

DC BLOCKS

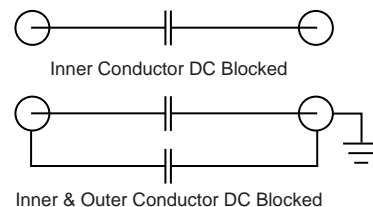
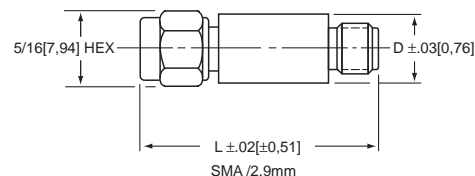
10 MHz TO 40 GHz

SERIES B200

GENERAL INFORMATION

DC blocks are typically used to keep low frequency noise/signals or DC out of RF circuits. The B200 series are supplied in two (2) basic types: inner DC block only, or inner and outer conductor DC block (see schematic) The models listed include connector types SMA, Type N, and 2.9mm, in male and female combinations. The 2.9mm connector is electrically and mechanically compatible with SMA, *K, or 3.5mm connectors. All units are passivated stainless steel with gold plated BeCu contacts.

*The K connector is a trademark of Wiltron corp.



Model	Type	Connectors (m/f)	Frequency (GHz)	Maximum VSWR	Maximum Insertion Loss	Length inches/mm	Diameter inches/mm	Maximum voltage (VDC)
B201M	inner & outer	SMA	.010-18	1.35	0.5	1.20 [30,5]	0.50 [12,7]	200
B202N	inner	Type N	.010-18	1.35	0.5	1.76 [44,7]	0.62 [15,7]	200
B203M	inner	2.9mm	.010-26.5	1.35	0.5	0.855 [21,72]	0.28 [7,1]	200
B204M	inner	2.9mm	.010-40	1.45	0.5	0.855 [21,72]	0.28 [7,1]	200
B205M (1µF CAP)	inner	SMA	.010-.050	1.35	0.25	1.40 [35,6]	0.25 [6,4]	50
			.050-2.0	1.10	0.25			[1.5KW RF POWER]
			2-12.4	1.25	0.50			
			12.4-18	1.35	0.65			

KEY: Inches[Millimeters] .XX ±.03 .XXX ±.010 [.X ±0.8 .XX ±0.25]