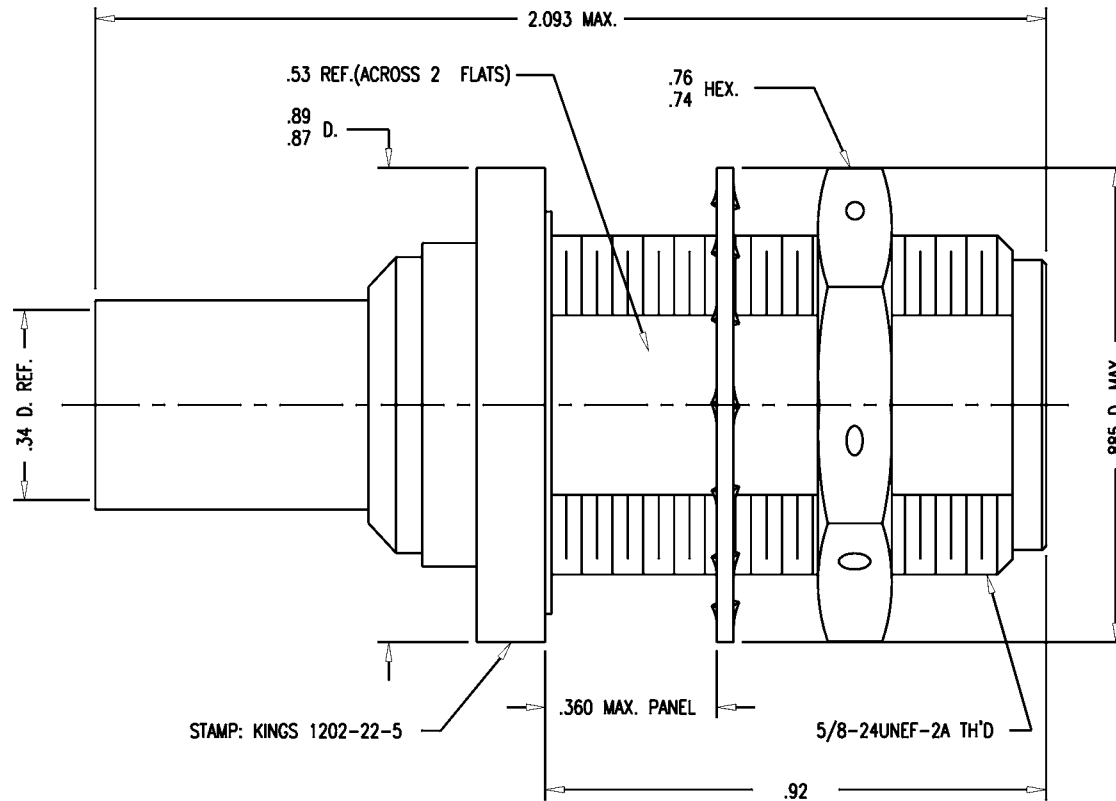


DASH NO.	M CODE	MADE FROM
----------	--------	-----------



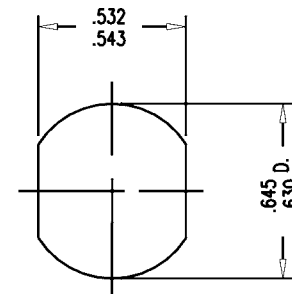
STAMP: KINGS 1202-22-5

NOTES:

- FOR USE WITH DOUGLAS D2348-1 CABLE.
- FOR CABLING INSTRUCTIONS SEE CP-5402.
- FOR CRIMPING USE DIE KTH-2012.
- INTERFACE PER MIL-STD-348, FIG. 304-2.
- CENTER CONTACT (1-534-7M9D) SUPPLIED UNASSEMBLED.
- MARK PACKAGE: KINGS 1202-22-5 XX XX (DATE CODE)  
DOUGLAS 500489-1
- MATERIALS:  
INSULATOR-TEFLON, ASTM-D-4894  
LOCKWASHER-PHOS. BRONZE, ASTM-B-103  
CENTER CONTACT-BER. COP., ASTM-B-196  
K-GRIP SLEEVE-COM. BRONZE, ASTM-B-140  
GASKET-SILICONE RUBBER, ZZ-R-765  
ALL OTHER METAL PARTS-BRASS, ASTM-B16
- FINISHES:  
CENTER CONTACT-GOLD PLATE PER MIL-G-45204  
ALL OTHER METAL PARTS-SILVER PLATE PER QQ-S-365
- ELECTRICAL CHARACTERISTICS:  
NOMINAL IMPEDANCE-50 OHMS  
FREQUENCY RANGE-DC TO 11 GHZ  
WORKING VOLTAGE-1000 VRMS

GSD

1202-22-5



MOUNTING HOLE

GSD

REVISIONS

ISSUE	CHANGES
0	ER 36811 KH 02/08/96
1	CN 36827 C MJB 04/15/96
2	CN 38710 C DCT 6/23/3

SCALE 4:1

APPROX SURFACE AREA

WAS: E-19116

USED ON

REF: Mc D. D. AIRCRAFT # 500489-1 REV. -

JACK, BULKHEAD, N

DRAWN KH DATE 02/08/96

DESIGN CT DATE 02/09/96

APPR. DATE

**KINGS**  
ELECTRONICS CO., INC.  
TUCKAHOE, NEW YORK 10707

1202-22-5