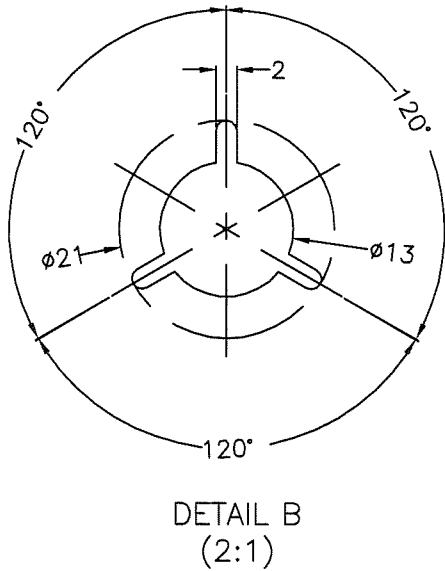
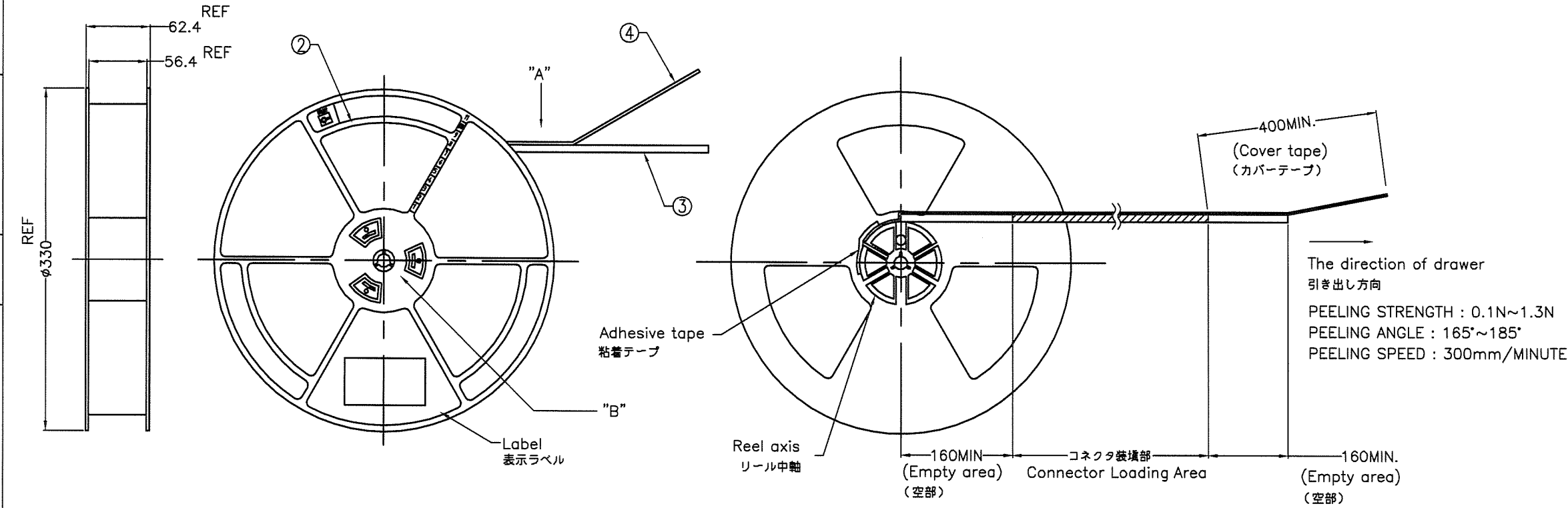


PRODUCT NO.	① CONNECTOR	QTY
10085304-2001ELF	10085304-2001ALF	600
10085304-4001ELF	10085304-4001ALF	600

EMBOSS PACKAGE



- NOTE
- THIS ARTICLE CARRIES OUT TEH EMBOSS TAPE PACKAGE OF THE SLIM LINE SATA CONNECTOR.
  - THE SHAPE AND DIMENSION OF THIS ARTICLE ARE BASED ON JIS C 0806.  
(TAPING OF ELECTRIC PARTS< SURFACE MOUNTED DEVICE)
  - PACKAGING SPEC. : REFER TO GS-14-1268
  - PRODUCT SPEC. : REFER TO GS-12-543

- 注 記
- 本品はスリムラインシリアルエーティーエーコネクタをエンボステープ梱包したものである。
  - 本品の形状及び寸法規定は JIS C 0806 (電子部品のテーピング (表面実装部品)) に準拠する。
  - 梱包規格はGS-14-1268を参照のこと
  - 製品規格はGS-12-543を参照のこと

PARTS TABLE 部品表				
No.	PART NAME 部品名	MATERIAL 材質	QTY.	NOTE 備考
①	CONNECTOR コネクタ	SEE SHEET 2	600	
②	THE REEL FOR PACKAGING 梱包用リール	POLYSTYRENE ポリスチレン	1	Color : BLACK or BLUE, ELECTRIFICATION PREVENTION PROCESSING 色 : 黒または青、帯電防止処理品
③	EMBOSS TAPE エンボステープ	PET	1	ELECTRIFICATION PREVENTION PROCESSING 帯電防止処理品
④	COVER TAPE カバーテープ	POLYESTER ポリエステル	1	

mat'l. code				surface	tolerance	projection	product family	CODE
---				ISO 1302	ISO 406	ISO 1101	530F SATA PLUG SLIM LINE	JP
ltr	description	ecn no	dr	date	tolerance unless otherwise specified	linear	mm	title
A	RELEASED	J08-0078	N.S	2008-2-25	0.X	±0.2		SLIM LINE SATA 7+6P PLUG
B	REVISED	J08-0130	N.S	2008-3-25	0.XX	±0.2		SCREW(SQUARE), R/A SMT
					±1°	0.XXX	±0.2	scale 1:3
					dr	N.SASAME	2008-3-25	dwg no
					enr	N.SASAME	2008-3-25	sheet 1 of 4 size
					chr	21.2.2008	2008-3-25	10085304
					app	21.2.2008	2008-3-25	A2
sheet	revision	B	B	B	B			type
index	sheet	1	2	3	4			PRODUCT CUSTOMER Drawing
								Rev. B

# CONNECTOR ASSY

PARTS TABLE 部品表

No.	Part name 部品名	QTY.	Note 備考
⑤	HOUSING ハウジング	1	HIGH TEMP THERMOPLASTIC COLOR : BLACK , UL94V-0
⑥	SIGNAL CONTACT シグナルコンタクト	6	COPPER ALLOY CONTACT AREA : Au SOLDERING AREA : Au or TIN
⑦	POWER CONTACT パワーコンタクト	7	COPPER ALLOY CONTACT AREA : Au SOLDERING AREA : Au or TIN
⑧	SOLDER PEG (CENTER) 溶接金具 (中央部)	1	COPPER ALLOY TIN PLATING
⑨	SOLDER PEG (L&R) 溶接金具 (左、右)	2	COPPER ALLOY TIN PLATING

<P/N composition> <P/N 構成>

10085304 - X X X X X LF

- LEAD-FREE
- PACKAGE SPEC
- E : TAPE AND REEL (EMBOSS ASSY)
- T : TRAY (TRAY ASSY)
- A : CONNECTOR ASSY (NOT PACKAGE)
- SIGNAL CONTACT TAIL LENGTH
- 0 : 1.0mm
- 1 : 0.7mm
- SIGNAL CONTACT TAIL WIDTH
- 0 : 0.35mm
- 1 : 0.40mm
- HSG BOSS LENGTH
- 0 : 1.0mm
- 1 : 0.7mm
- CONTACT PLATING (CONTACT AREA / SOLDERING AREA)
- 0 : GOLD FLASH (0.05 $\mu$ m) / TIN PLATING
- 1 : 0.38 $\mu$ m GOLD PLATING / TIN PLATING
- 2 : 0.76 $\mu$ m GOLD PLATING / TIN PLATING
- 3 : GOLD FLASH (0.05 $\mu$ m) / GOLD FLASH (0.05 $\mu$ m)
- 4 : 0.76 $\mu$ m GOLD PLATING / GOLD FLASH (0.05 $\mu$ m)

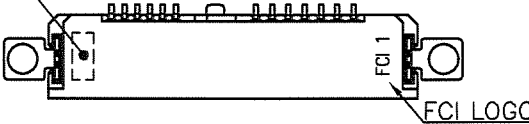
## NOTE

- MATERIAL : SEE TABLE
- FINISH : SEE TABLE AND P/N COMPOSITION TABLE
- COPLANARITY : 0.1 MAX.
- DATE CODE MARK : YY/MM/DD/XX XX IS USED TO MARK CONTACT PLATING SPEC.  
"05" : FLASH, "15" : 15 $\mu$ , "30" : 30 $\mu$

## 注記

- 材料 : 表参照
- めっき : 表及び型番構成参照
- コプラナリティ : 0.1以下
- デットコード刻印 : YY/MM/DD/XX XXはコンタクトのめっきの種類  
"05" : FLASH, "15" : 15 $\mu$ , "30" : 30 $\mu$

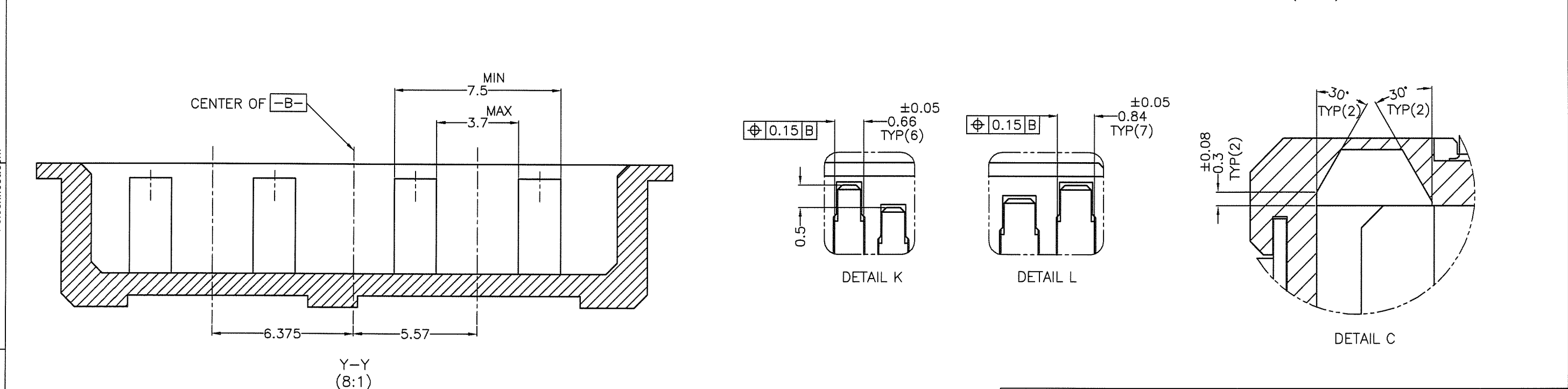
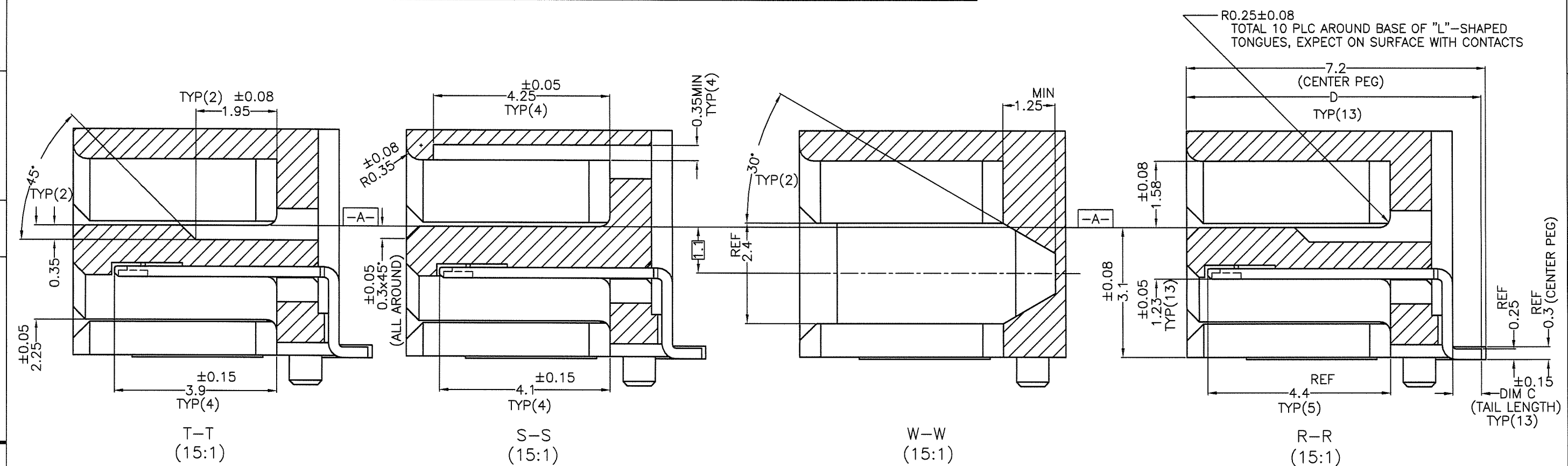
DATE CODE  
(NOTE8)



(COPLANARITY)  
(NOTE 7)

mat'l. code				surface	tolerance	projection	product family	CODE
---				ISO 1302	ISO 406 ISO 1101	mm	530F SATA PLUG SLIM LINE	JP
ltr	description	ecn no	dr	date	tolerances unless otherwise specified	angles	title	
A	RELEASED	J08-0078	N.S	2008-2-28	0.X	±0.2	SLIM LINE SATA 7+6P PLUG	
B	REVISED	J08-0130	N.S	2008-3-25	0.XX	±0.2	SCREW(SQUARE), R/A SMT	
					0.XXX	±0.2	dwg no	sheet2 of 4 size
					±1'		10085304	A2
					dr	N.SASAME	2008-3-25	
					enrg	N.SASAME	2008-3-25	
					chr	21.04.04.04	2008-3-25	
					appd	FCI	2008-3-25	
sheet	revision						type	PRODUCT CUSTOMER Drawing
index	sheet							Rev. B

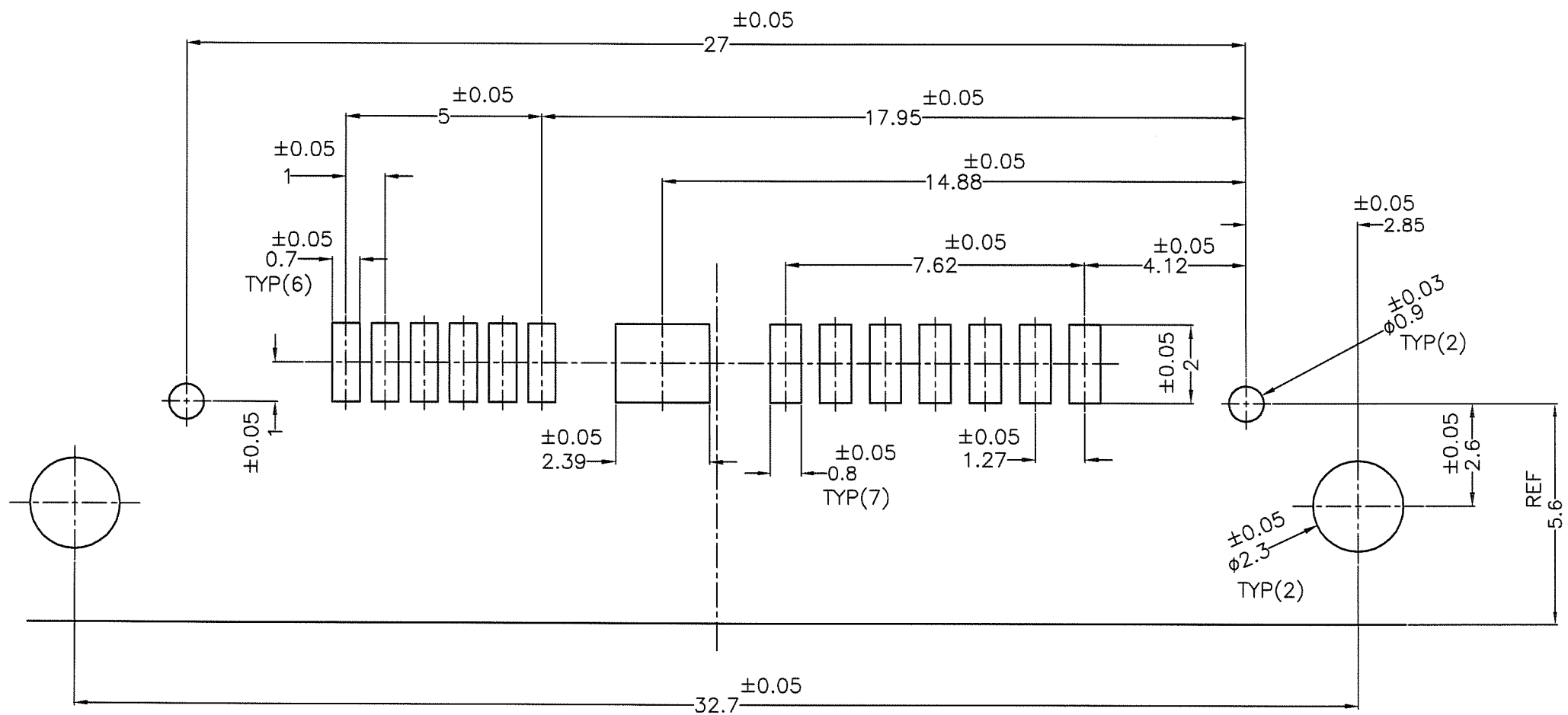
PRODUCT NO.	CONTACT AREA PLATING	SOLDERING AREA PLATING	HSG BOSS HEIGHT (DIM A)	TAIL WIDTH (DIM B)	TAIL LENGTH (DIM C)	TAIL LENGTH (DIM D)
10085304-2001ALF	GOLD 0.76um[30u"]	1.91um [75u"] MIN. 100% TIN	1.0mm	0.35mm	0.7mm	7.1mm
10085304-4001ALF	GOLD 0.76um[30u"]	GOLD FLASH 0.05um[2u"]	1.0mm	0.35mm	0.7mm	7.1mm



mat'l. code	surface	tolerance	projection	product family	CODE
---	ISO 1302	ISO 406	ISO 1101	530F SATA PLUG SLIM LINE	JP
ltr	description	ecn no	dr	date	tolerance unless otherwise specified
A	RELEASED	J08-0078	N.S	2008-2-28	0.X ±0.2
B	REVISED	J08-0130	N.S	2008-3-25	0.XX ±0.2
					0.XXX ±0.2
					±1'
					dr N.SASAME 2008-3-28
					enr N.SASAME 2008-3-25
					chr 21.000000 2008-3-25
					appd 17.000000 2008-3-25
sheet index	revision sheet				

CONNECTOR ASSY

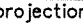






RECOMMENDED PCB PATTERN LAYOUT



Copyright FCI

mat'l. code ----					surface ISO 1302 ✓		tolerance ISO 406 ISO 1101		projection 	product family 530F SATA PLUG SLIM LINE		CODE JP
ltr	description	ecn no	dr	date	tolerances unless otherwise specified			title				
A	RELEASED	J08-0078	N.S	2008-2-28	angles linear	0.X ±0.2			SLIM LINE SATA 7+6P PLUG SCREW(SQUARE), R/A SMT			
B	REVISED	J08-0130	N.S	2008-3-25		0.XX ±0.2						
						0.XXX ±0.2						
					±1°			scale 1:3	dwg no sheet4 of 4 size 10085304 A2			
				dr	N.SASAME	2008-3-28						
				enrg	N.SASAME	2008-3-25						
				chr	J. Sakamoto	2008-3-28						
				appd	H. Suzuki	2008-3-25						
sheet index	revision sheet								type		PRODUCT CUSTOMER Drawing	
											Rev. B	