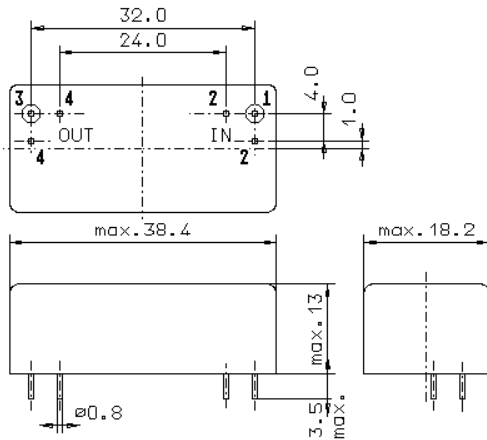


Specification for monolithic crystal filter:

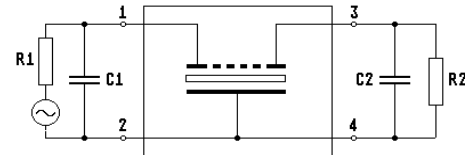
MQF 90.0 - 3000/08

1. General

1.1. Package:



GM17



- | | |
|-----------------------------------|------------------|
| 1.2. Type name: | MQF 90.0-3000/08 |
| 1.3. Number of poles: | 6 |
| 1.4. Operating temperature range: | -20°C to +70°C |
| 1.5. Storage temperature range: | -45°C to +85°C |

2. Electric values

- | | |
|--|--|
| 2.1. Nominal centre frequency f_0 : | 90.0 MHz |
| 2.2. Pass band | |
| 2.2.1. Bandwidth between 3 dB - frequencies: | $> \pm 15$ kHz |
| 2.2.2. Ripple in pass band: | < 1.0 dB (peak to peak) |
| 2.2.3. Differential group delay: | < 15 μ s at $f_0 \pm 6$ kHz |
| 2.2.4. Insertion loss: | < 5.0 dB |
| (measured on smallest attenuation in pass band) | |
| 2.3. Stop band | |
| 2.3.1. $f_0 \pm 25$ kHz | > 10 dB |
| 2.3.2. $f_0 \pm 50$ kHz | > 25 dB |
| 2.3.3. $f_0 \pm 100$ kHz | > 70 dB (except spurious) |
| 2.4. Terminating impedance (input and output): | 50 Ω // 0 pF |
| 2.5. 3 rd order outband intermodulation products (IP3) | |
| - test tones: $f_0 \pm 100$ / $f_0 \pm 200$ kHz | |
| - input power level: -5 dBm per tone | $> +30$ dBm (70dB down from both -5dBm test tones) |
| - input power level: -15 dBm per tone | $> +25$ dBm (80dB down from both -15dBm test tones) |
| 2.6. Maximum input power level: | 0 dBm / +10 dBm (operating / without damage) |
| 3. Marking: | manufacturer, date code
27L32693818
MQF 90.0-3000/08 |
| 4. Environment conditions: | Corresponding to Vectron MIL standard |

Edited by: _____ date: _____ name: _____