

Amphenol

HDM Series

Hermaphroditic Duplex
Miniature



The Fibre Optic Hermaphroditic range has now developed an additional product, the Hermaphroditic Duplex. This product has been specially designed to facilitate the interconnection of Fibre Optic Cable assemblies, thus eliminating the need for polarising the assemblies and the use of in-line adapters.

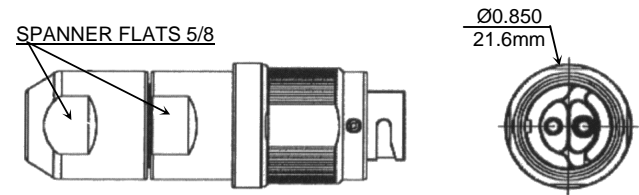
- Lightweight, small design, outer diameter of coupling ring measures less than 22.00mm
- Low loss ceramic PC technology in multimode and singlemode
- Connector and monobloc environmentally sealed
- Fully hermaphroditic wipe clean bayonet mating mechanism
- Fully removable front receptacle shell, for cleaning whilst insitu
- Plug backshell allows for the removal of the ferrule monobloc for ease of cleaning
- Choice of materials and plating
- High tension cable load capability

Amphenol

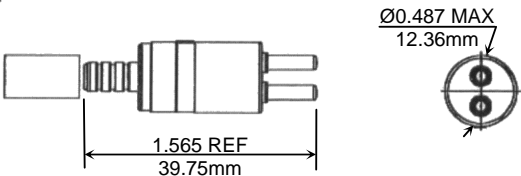
Visit our Website @
www.amphenol.co.uk

Technical Information

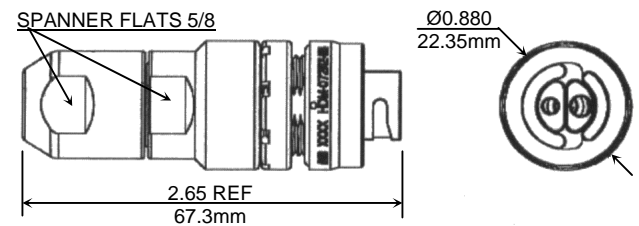
**HDM PLUG ASSEMBLY
HDM-062XX-014**



**HDM MONOBLOC SUB ASSEMBLY
HDM-49-06-014**

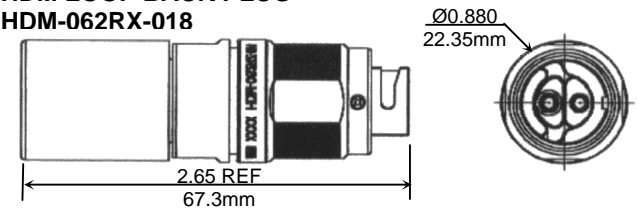


**HDM IN-LINE FREE JAM NUT
RECEPTACLE ASSEMBLY
HDM-072XX-014**

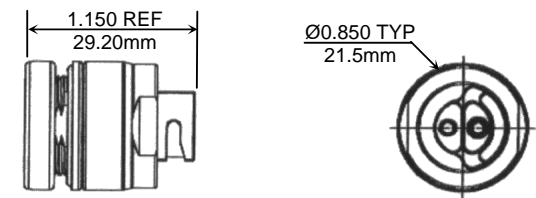


TO SUIT HDM-062XX-XXX
AND HDM-072XX-XXX

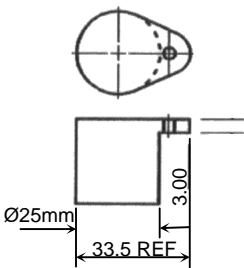
**HDM LOOP BACK PLUG
HDM-062RX-018**



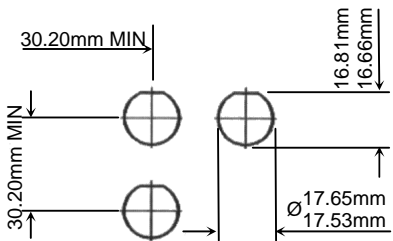
**HDM PANEL MOUNT JAM NUT
RECEPTACLE ASSEMBLY
HDM-072RX-011**



**HDM DUST CAP ASSEMBLY
960-990**



**RECOMMENDED PANEL PIERCING
FOR HDM-072XX-XXX SCALE 1:2**



Performance

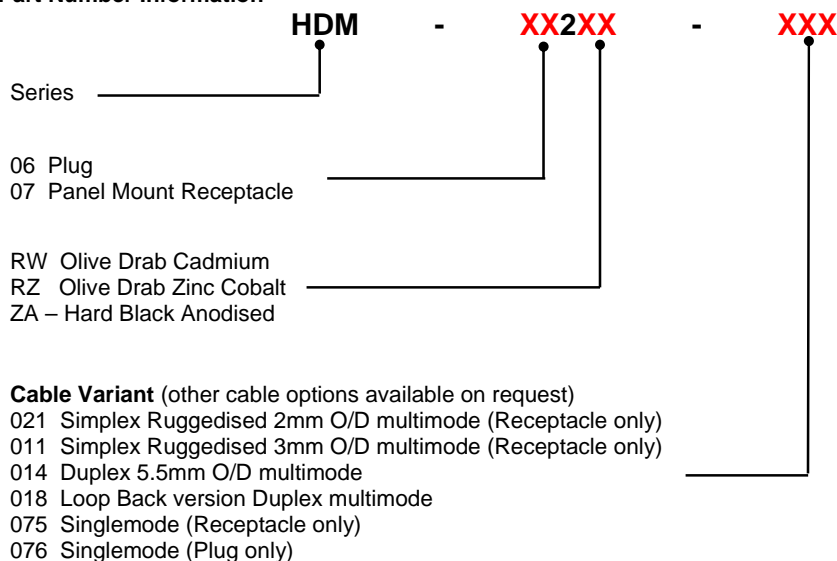
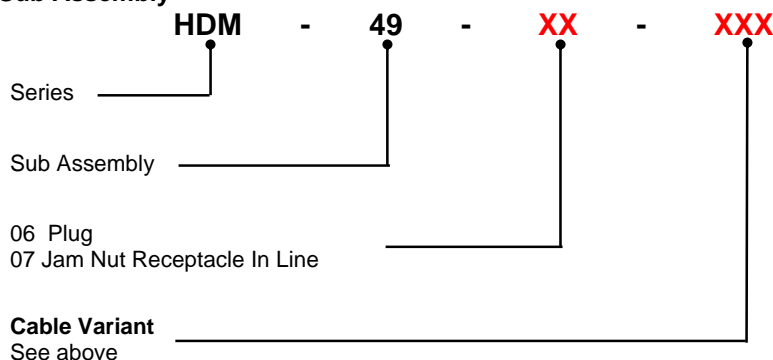
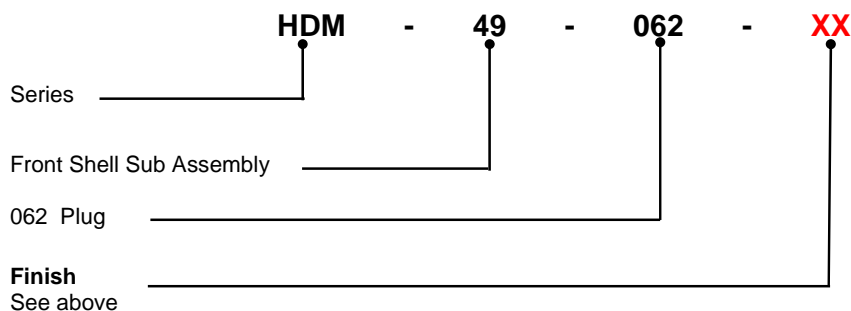
Optical	
Insertion Loss	Typically 0.3dB using 62.5/125
Repeatability	<0.15dB
Fibre Types	50/125 62.5/125 9/125
Termination Method	Epoxy / Polish

Environmental	
Temperature Range	-55°C / +85°C cable dependant

Mechanical	
Durability	500 matings
Materials	Shell : Aluminium
	Ferrule : Zirconia
	Alignment Sleeve : Ceramic
	Seals : Silicone

Termination Tooling	
Basic Kit	927 – 100 – 3000
HDM Add On	927 – 100 – 4200
Consumable Pack	927 – 100 – 6000 Approx 50 terminations



Part Number Information**Sub Assembly****Front Shell Sub Assembly****Dust Cap****960-990**

-

Includes Terelene Cord and Crimp ferrule

Notice: Products are sold subject to Amphenol's conditions of sale ("the standard conditions.") All specifications and statements contained herein are believed to be correct at the time of printing but no representation or warranty, express or implied, is given as to any specification or statement contained herein. Product specifications including performance characteristics are typical only and subject to deviation. Specifications are also subject to change without notice. Users should not assume that all safety measures are indicated or that other measures may not be required. No representation or warranty, express or implied, is given that any use of products (including any stated or suggested use) does not infringe any patent, registered design or other third party rights and no stated or suggested use of products can be taken to recommend any such infringement.