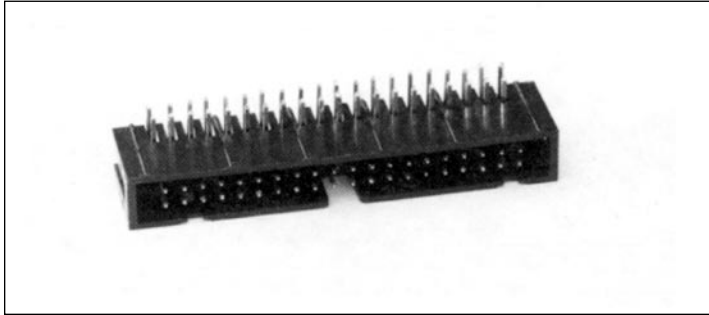


.100" (2.54mm) Dual Row, Through Hole, Right Angle, Military Polarization Header



9100 SERIES ("POST/BOXE")

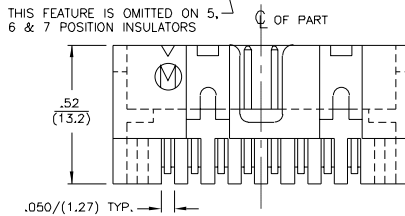
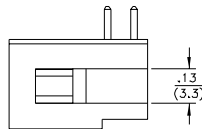
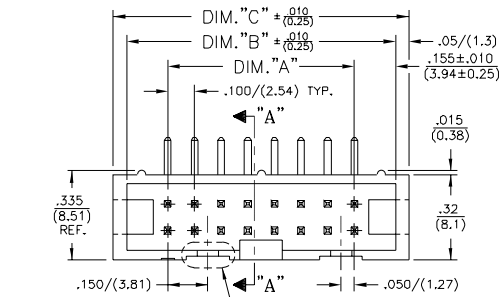
PART NUMBER LEGEND

910X-11-2XX-XX

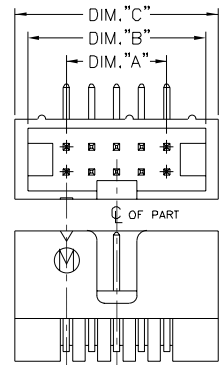
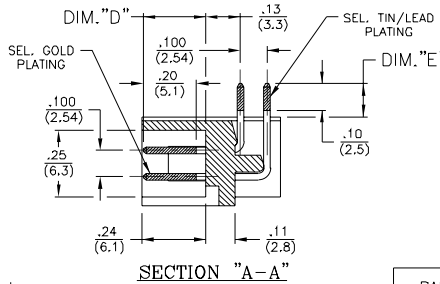
- PIN NUMBER**
(SEE TABLE II)
- NUMBER OF POSITIONS**
(SEE TABLE I)
- PIN PLATING**
(SEE NOTE 4)
- INSULATOR MATERIAL**
(SEE NOTE 2)

NOTES:

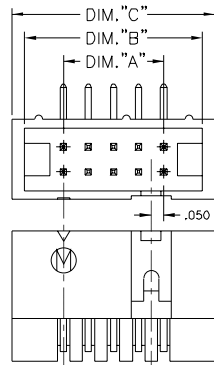
- 1) ALL DIMENSIONS ARE SHOWN AS INCHES/(MM).
- 2) INSULATOR MATERIAL:
910X - POLYESTER (PBT), 30% G/R, U.L. 94 V-0, COLOR IS BLACK;
- 3) PIN MATERIAL: PHOSPHOR BRONZE.
- 4) PIN FINISH:
9100 - TIN/LEAD OVER NICKEL PLATE;
9108 - SEL. GOLD PLATE (.000030) AND SEL. TIN/LEAD (.0001/.0002) WITH NICKEL UNDER-PLATE (.000050) OVERALL;
910E - SEL. GOLD PLATE (.000015) AND SEL. TIN/LEAD (.0001/.0002) WITH NICKEL UNDER-PLATE (.000050) OVERALL.



7 THRU 32 POSITION PARTS

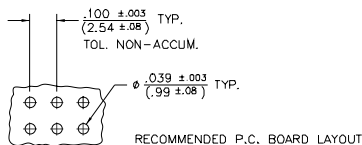


P/N 910X-11-²⁰⁵/₂₀₈-XX
5 & 6 POSITION ONLY



P/N 910X-11-³⁰⁵/₃₀₈-XX
5 & 6 POSITION ONLY

NOTE: ALL OTHER DIMENSIONS ARE THE SAME AS 7 THRU 32 POSITION (SHOWN ABOVE).



| PART No. | No. OF POS. | DIM "A" | DIM "B" | DIM "C" |
|----------------|-------------|---------------|---------------|---------------|
| 910X-11-X05-XX | 10 | .400/(10.16) | .710/(18.03) | .810/(20.57) |
| X06 | 12 | .500/(12.70) | .810/(20.57) | .910/(23.11) |
| 207 | 14 | .600/(15.24) | .910/(23.11) | 1.010/(25.65) |
| 208 | 16 | .700/(17.78) | 1.010/(25.65) | 1.110/(28.19) |
| 209 | 18 | .800/(20.32) | 1.110/(28.19) | 1.210/(30.73) |
| 210 | 20 | .900/(22.86) | 1.210/(30.73) | 1.310/(33.27) |
| 211 | 22 | 1.000/(25.40) | 1.310/(33.27) | 1.410/(35.81) |
| 212 | 24 | 1.100/(27.94) | 1.410/(35.81) | 1.510/(38.35) |
| 213 | 26 | 1.200/(30.48) | 1.510/(38.35) | 1.610/(40.89) |
| 214 | 28 | 1.300/(33.02) | 1.610/(40.89) | 1.710/(43.43) |
| 215 | 30 | 1.400/(35.56) | 1.710/(43.43) | 1.810/(45.97) |
| 216 | 32 | 1.500/(38.10) | 1.810/(45.97) | 1.910/(48.51) |
| 217 | 34 | 1.600/(40.64) | 1.910/(48.51) | 2.010/(51.05) |
| 218 | 36 | 1.700/(43.18) | 2.010/(51.05) | 2.110/(53.59) |
| 219 | 38 | 1.800/(45.72) | 2.110/(53.59) | 2.210/(56.13) |
| 220 | 40 | 1.900/(48.26) | 2.210/(56.13) | 2.310/(58.67) |
| 221 | 42 | 2.000/(50.80) | 2.310/(58.67) | 2.410/(61.21) |
| 222 | 44 | 2.100/(53.34) | 2.410/(61.21) | 2.510/(63.75) |
| 223 | 46 | 2.200/(55.88) | 2.510/(63.75) | 2.610/(66.29) |
| 224 | 48 | 2.300/(58.42) | 2.610/(66.29) | 2.710/(68.83) |
| 225 | 50 | 2.400/(60.96) | 2.710/(68.83) | 2.810/(71.37) |
| 226 | 52 | 2.500/(63.50) | 2.810/(71.37) | 2.910/(73.91) |
| 227 | 54 | 2.600/(66.04) | 2.910/(73.91) | 3.010/(76.45) |
| 228 | 56 | 2.700/(68.58) | 3.010/(76.45) | 3.110/(78.99) |
| 229 | 58 | 2.800/(71.12) | 3.110/(78.99) | 3.210/(81.53) |
| 230 | 60 | 2.900/(73.66) | 3.210/(81.53) | 3.310/(84.07) |
| 231 | 62 | 3.000/(76.20) | 3.310/(84.07) | 3.410/(86.61) |
| 910X-11-232-XX | 64 | 3.100/(78.74) | 3.410/(86.61) | 3.510/(89.15) |

| PART No. | DIM "D" | DIM "E" |
|----------------|---------------------------------------|---------------------------------------|
| 910X-11-XXX-01 | .235 $\pm .015$ (5.97 ± 0.38) | .125 $\pm .015$ (3.18 ± 0.38) |
| 910X-11-XXX-02 | .235 $\pm .015$ (5.97 ± 0.38) | .090 $\pm .015$ (2.29 ± 0.38) |