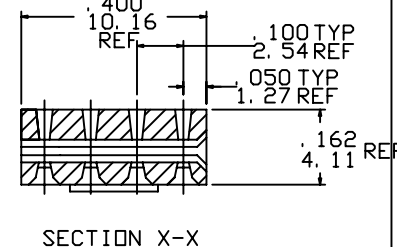
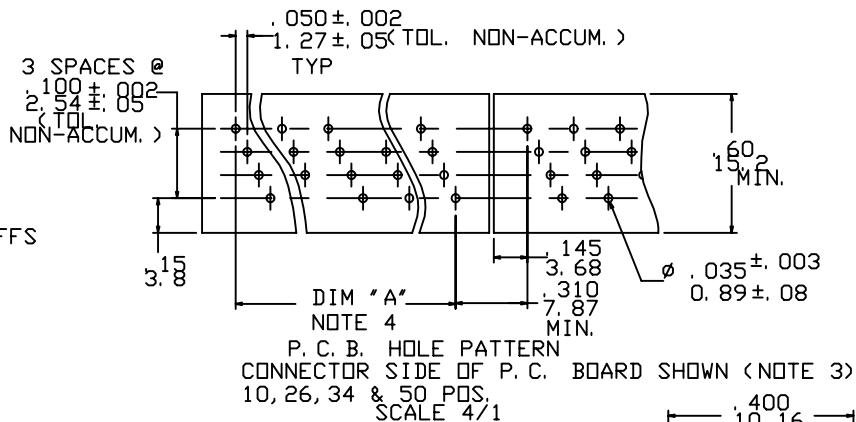
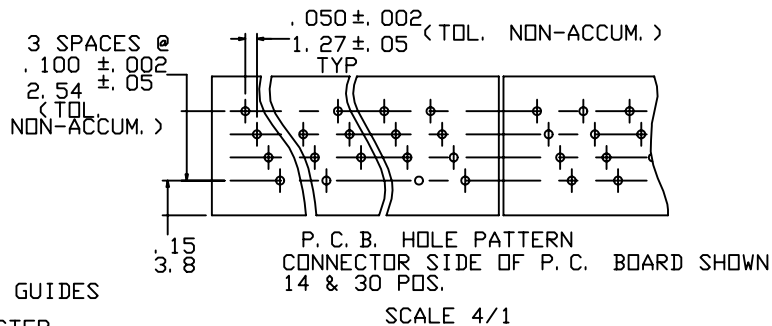
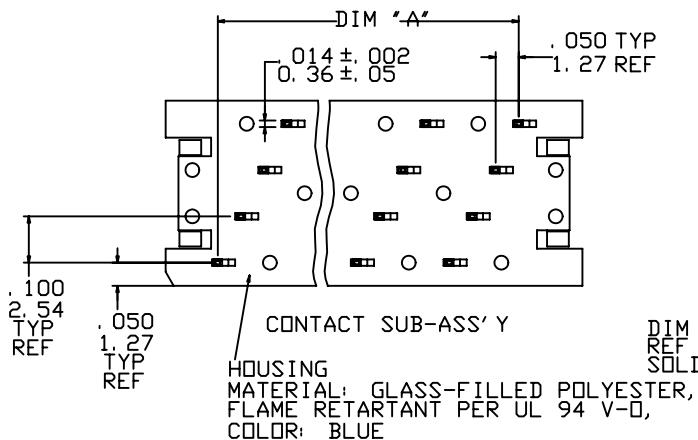
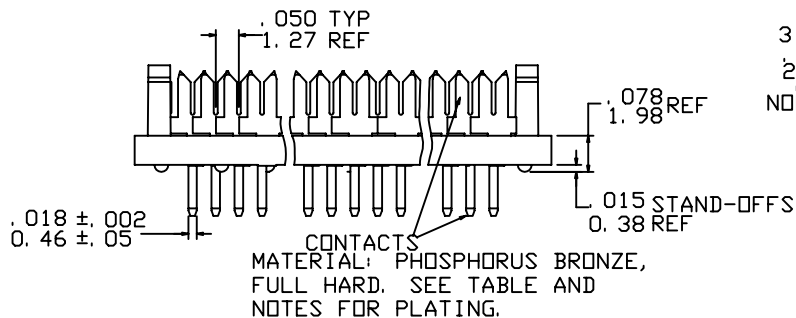
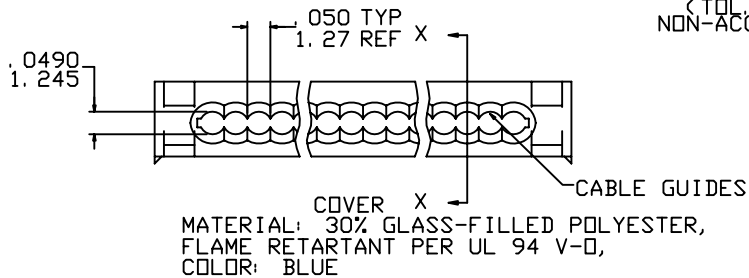


Tous droits strictement réservés. Reproduction ou communication à des tiers interdite sous quelque forme que ce soit sans autorisation écrite du propriétaire.
 Property of © FCI ELECTRONICS. Copyright © FCI ELECTRONICS INC. Droits de reproduction FCI ELECTRONICS INC.



All rights strictly reserved. Reproduction or issue to third parties in any form whatever is not permitted without written authority from the proprietor.
 Property of © FCI ELECTRONICS. Copyright © FCI ELECTRONICS INC.

PRODUCT NO.
SEE TABLE



mat'l. code				tolerances unless otherwise specified		CUSTOMER COPY		FCI www.fciconnect.com	
ltr	ecn no	dr	date	linear	.XX ±.01	projection	title	product family	code
P	V11058	JM	6/12/91		.XXX ±.005				
R	V50805	LSS	7/5/95	angles	.XXXX ±.0020	INCH/MM	QUICKIE P.C.B. CONNECTOR 10,14,26,30,34, & 50 POS.	size	dwg no
S	N05-0123	ZC	5/9/05		0' ±2'				
T	N07-0199	WG	08/27/07	dr	J.MUSTARD	6/12/91	product family	size	dwg no
				enr	M.SMYK	6/12/91			
				chr	W.FUNK	6/12/91			
				appd	M.SMYK	6/12/91			
sheet index	revision sheet	T	T				scale	A	65495
		1	2				2.5:1		

1 | 2


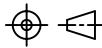
3

4

	NO. OF POS.	DIM "A"	DIM "B"	DIM "C" REF	SEE NOTE
65495-017(LF)	10	. 450/11. 43	. 700/17. 78	. 100/2. 54	1
-018(LF)				2	
-019(LF)				1	
-020(LF)				2	
-021(LF)	26	1. 250/31. 75	1. 500/38. 10	. 100/2. 54	1
-022(LF)				2	
-023(LF)				1	
-024(LF)				2	
-025(LF)	34	1. 650/41. 91	1. 900/48. 26	. 100/2. 54	1
-026(LF)				2	
-027(LF)				1	
-028(LF)				2	
-029(LF)	50	2. 450/62. 23	2. 700/68. 58	. 100/2. 54	1
-030(LF)				2	
-031(LF)				1	
-032(LF)				2	
-033(LF)	14	. 650/16. 51	. 900/22. 86	. 100/2. 54	1
-034(LF)				2	
-035(LF)				1	
-036(LF)				2	
-037(LF)	30	1. 450/36. 83	1. 700/43. 18	. 100/2. 54	1
-038(LF)				2	
-039(LF)				1	
65495-040(LF)				2	

NOTES:

- 50u"/1.27uM MIN. Ni UNDERPLATE OVER ENTIRE TERMINAL. AND Au FLASH ON SOLDER TAIL ONLY.
- 65495-***: 150u"/3.81uM MIN. TIN/LEAD 93/7 OVER ENTIRE TERMINAL. 50u"/1.27uM MIN. Ni UNDERPLATE.
65495-***LF: 150u"/3.81uM MIN. MATTE TIN OVER ENTIRE TERMINAL. 50u"/1.27uM MIN. Ni UNDERPLATE.
- SEE TA 247 FOR MORE INFORMATION.
- PATTERN SHOWN FOR CENTER TEN CONTACTS IS TYPICAL FOR ALL CONNECTOR LENGTHS, EXCEPT 14 & 30 POSITIONS.
- SUB-ASSEMBLY & COVER PACKED SEPARATELY.
- THE HOUSING OF XXXXX-XYLF WILL WITHSTAND EXPOSURE TO 260°C PEAK TEMPERATURE FOR 10 SECONDS IN A WAVE SOLDER PROCESS.

mat'l. code				tolerances unless otherwise specified		CUSTOMER COPY	 www.fciconnect.com
ltr	ecn no	dr	date	linear	.XX ±.01/.0±.3	projection	
T					.XXX ±.005/.00±.13	 INCH/MM	product family size dwg no A 65495
				angles	.XXX ±.0020/.000±.051		
				dr	0° ±2'	1:1	
				enr	J.MUSTARD 6/11/91		
				chr	M.SMYK 6/11/91		
				appd	W.FUNK 6/11/91		
					M.SMYK 6/11/91		
sheet index	revision sheet	T	2				

form no. 7530-001-103

1 | 2

PDM: Rev:T

STATUS: Released

Printed: April 12, 2011

Tous droits strictement reserves. Reproduction ou communication a des tiers interdite sous quelque forme que ce soit sans autorisation ecrite du proprietaire. Propriete de ©FCI ELECTRONICS. Droits de reproduction FCI ELECTRONICS INC.

All rights strictly reserved. Reproduction or issue to third parties in any form whatever is not permitted without written authority from the proprietor. Property of ©FCI ELECTRONICS Copyright FCI ELECTRONICS INC.

