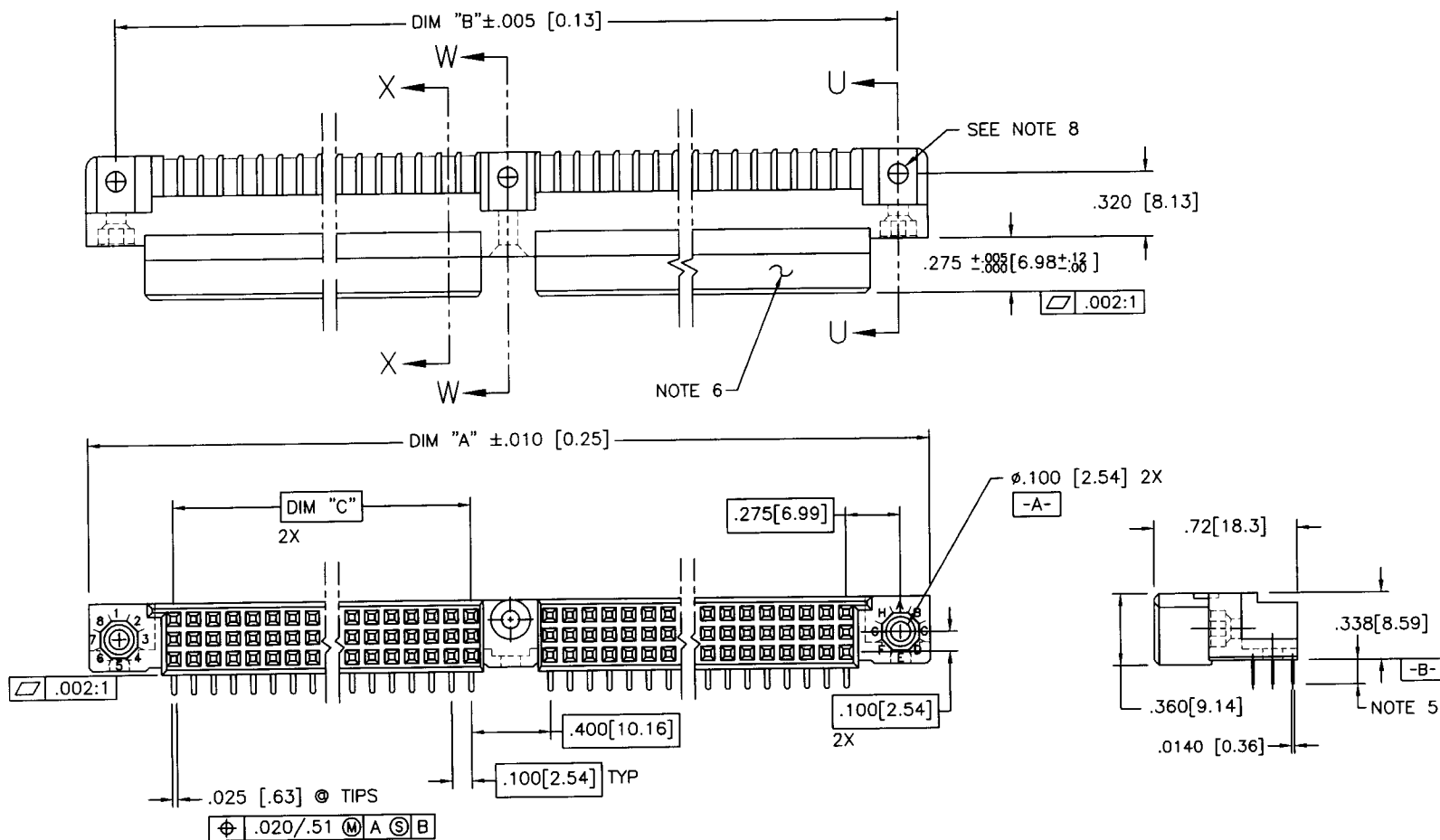


Tous droits strictement réservés. Reproduction ou communication à des tiers interdite sous quelque forme que ce soit sans autorisation écrite du propriétaire. Propriété de c FCI. Droits de reproduction FCI.

All rights strictly reserved. Reproduction or issue to third parties in any form whatever is not permitted without written authority from the proprietor. Property of FCI. Copyright FCI.



PRODUCT NUMBER
SEE NOTE 1



mat'l. code NOTE 3				tolerances unless otherwise specified		CUSTOMER COPY		Electronics FCI www.fciconnect.com	
ltr	ecn no	dr	date	linear	.XX \pm .01/.XX \pm .3	projection		title	code
A	V80316	MSC	3/3/98	linear	.XXX \pm .005/.XX \pm .13		INCH/MM	3 ROW R/A TT RECEPTACLE	213
B	V80732	HTB	4/16/98	linear	.XXX \pm .0020/.XX \pm .051			SOLDER TO BOARD 1 G.P.	sheet
C	V00260	JWS	1/25/00	angles	0' \pm 2'	scale	1:1	product family HPC	1 of 3
D	V01360	CGD	6/29/00	dr	M. CLOUSER 3/3/98			size dwg no	
				enr	J. BROWN 3/3/98			A	51446
				chr	J. BROWN 3/3/98				
				appd	J. BROWN 3/3/98				
sheet index	revision	D	D	D				cage code	
	sheet	1	2	3				22526	

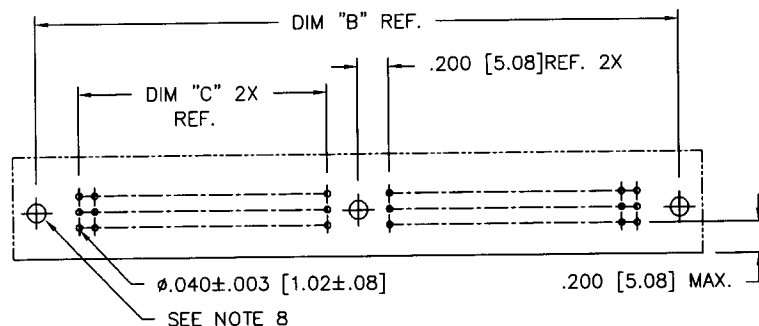
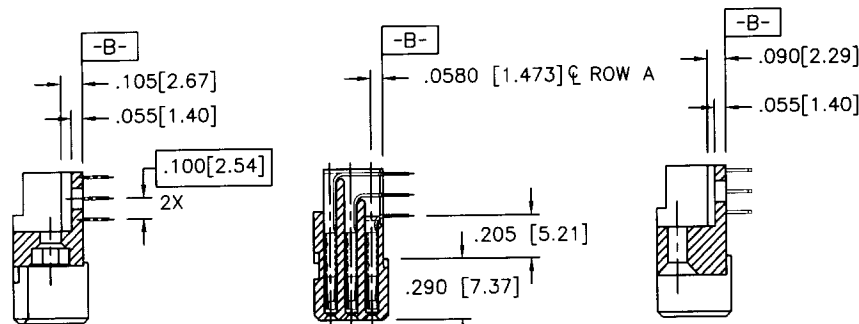
ACAD

PDM: Rev:D

STATUS: Released

Printed: Sep 27, 2003

PRODUCT NUMBER	DIM.	LENGTH FORMULAS
SEE NOTE 1	DIM A	.100/2.54 X NO. OF COLUMNS + 1.05/26.7
	DIM B	.100/2.54 X NO. OF COLUMNS + .750/19.05
	DIM C	.100/2.54 X NO. OF COLUMNS DIVIDED BY 2 - .100/2.54



RECOMMENDED PCB LAYOUT
(ALL HOLES LOCATED ON .100 [2.54] GRID
UNLESS OTHERWISE SPECIFIED)

NOTES:

- PRODUCT NUMBERING CODE:
51446 - X YYY Z S
SPECIAL FEATURES(NOTE 8)
TAIL LENGTH(NOTE 5)
NO. OF POSITIONS(NOTE 2)
PLATING(NOTE 4)
BASE NUMBER
- THIS PRODUCT IS CONFIGURED IN SIZES OF 20 thru 122 COLUMNS IN INCREMENTS OF TWO.
i.e.: 20,22,24,26.....118,120,122.
- HOUSING MATERIAL: GLASS AND MINERAL FILLED HIGH TEMP. THERMO PLASTIC. FLAME RETARDANT PER UL94V-0.
COLOR: BLACK.
CONTACT MATERIAL: BeCu
- CONTACT AREA PLATING OPTIONS:
1 = 30u"/.76u GOLD
3 = 50u"/1.27u GOLD
5 = 30u"/.76u GXT
ALL SOLDER TAILS TIN/LEAD
- TAIL LENGTH OPTIONS:
E = .125±.010 / 3.18±.25
F = .145±.010 / 3.68±.25
- MANUFACTURE'S NAME, PART NUMBER AND LOT CODE TO APPEAR ON THIS SURFACE PER BUS-12-108.
- FOR DOCUMENTATION MENU, SEE SPEC. BUS-01-057.
- SPECIAL FEATURES: (SEE SHEET 3)
- IF CODE IS OMITTED FROM PRODUCT NO.; CONNECTOR IS PROVIDED AS SHOWN, NO SPECIAL FEATURES ARE SELECTED. FOR P.C.B. ATTACHMENT IN A .120 [3.05] MOUNTING HOLE.
"A" = IF SPECIFIED, PRE-INSTALLED CLAW FOR P.C.B. ATTACHMENT IN A Ø.100 MOUNTING HOLE. (AVAILABLE IN "E" TAIL LENGTH ONLY).
"B" = IF SPECIFIED, PRE-INSTALLED CLAW FOR P.C.B. ATTACHMENT IN A Ø.120 MOUNTING HOLE.
"C" = IF SPECIFIED, MOLDED GUIDE PINS w/CLAW FOR P.C.B. ATTACHMENT IN A Ø.120 MOUNTING HOLE.
"D" = IF SPECIFIED, MOLDED GUIDE PINS w/Ø.120 MOUNTING HOLE. (NO CLAW)
- CLAW DIMENSION DETERMINED BY P.C.B. HOLE DIAMETER.

mat'l. code				tolerances unless otherwise specified		CUSTOMER COPY		Electronics FCI	
ltr	ecr no	dr	date	linear	.XX±.01/.X±.3	projection	title	product family	code
D					.XXX±.005/.XX±.13	INCH/MM	3 ROW R/A TT RECEPTACLE	HPC	213
				angles	.XXX±.0020/.XXX±.051	scale	SOLDER TO BOARD 1 G.P.	size	sheet
				dr	0° ±2°	1:1	A	51446	2 of
				enrg	M. CLOUSER 3/3/98				
				chr	J. BROWN 3/3/98				
				appd	J. BROWN 3/3/98				
sheet index	revision sheet								

cage code
22526

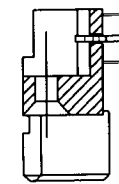
ACAD

PDM: Rev:D

STATUS: Released

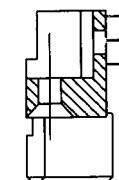
Printed: Sep 27, 2003

SPECIAL FEATURE OPTION B



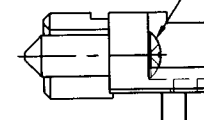
SECTION W-W




SPECIAL FEATURE OPTION D



SECTION W-W

— SELF TAPPING SCREW, 2X



mat'l. code				tolerances unless otherwise specified				CUSTOMER COPY		 Electronics FCI www.fciconnect.com	
ltr	ecn no	dr	date	linear	.XX±.01/.X±.3			projection 	title 3 ROW R/A RECEPTACLE SOLDER TO BOARD, 1 G.P.		
D					.XXX±.005/.XX±.13						
					.XXX±.0020/.XXX±.051						
					angles	0° ±2°					
				dr	C.DAILY	6/28/00	INCH/MM 	product family		HPC	code 213 sheet 3 of
				engr	M. GRAY	6/28/00		size		dwg no	
				chr	M. GRAY	6/28/00		scale			
				appd	M. GRAY	6/28/00		N.T.S.		A	
sheet index		revision									
sheet											

cage code	22526
-----------	-------

Printed: Sep 27, 2003

All rights strictly reserved. Reproduction or issue to third parties in any form whatever is not permitted without written authority from the proprietor.
Property of FCI. Copyright FCI.

107