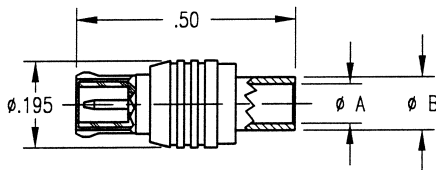


MCX: Direct Solder, Semi-rigid Cable

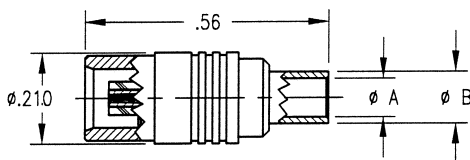
Straight Plug Captive Contact



Part Number	Cable	A	B
450-500-0470H	.047 S.R.	.052	.075
450-500-0850H	.085 S.R.	.089	.120
450-500-1410H	.141 S.R.	.144	.180

- See page 91 for cable assembly procedure: 5-11
- Part number shown is for gold plated.
- For nickel plate change suffix to "N".

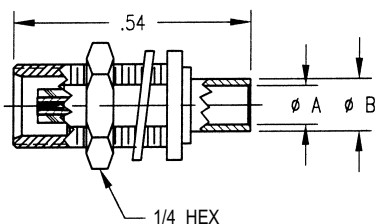
Straight Jack Captive Contact



Part Number	Cable	A	B
451-500-0470H	.047 S.R.	.052	.075
451-500-0850H	.085 S.R.	.089	.120
451-500-1410H	.141 S.R.	.144	.180

- See page 91 for cable assembly procedure: 5-11
- Part number shown is for gold plated.
- For nickel plate change suffix to "N".

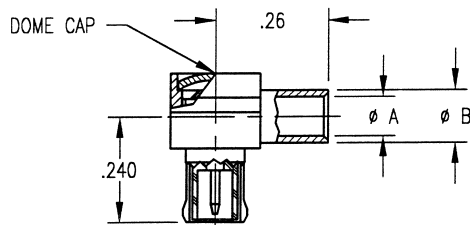
Straight Jack Bulkhead Mount Captive Contact



Part Number	Cable	A	B	Mounting Hole
451-580-0470H	.047 S.R.	.052	.075	No. 080
451-580-0850H	.085 S.R.	.089	.120	No. 080
451-580-1410H	.141 S.R.	.144	.180	No. 080

- See page 91 for cable assembly procedure: 5-11
- See page 83 for mounting hole layout.
- Part number shown is for gold plated.
- For nickel plate change suffix to "N".

Right Angle Plug

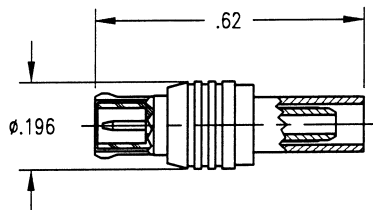


Part Number	Cable	A	B
452-500-0470H	.047 S.R.	.052	.075
452-500-0850H	.085 S.R.	.089	.120
452-500-1410H	.141 S.R.	.144	.180

- See page 92 for cable assembly procedure: 5-12
- Part number shown is for gold plated.
- For nickel plate change suffix to "N".

MCX: Crimp, Flexible Cable

Straight Plug Captive Contact



Part Number	Cable
450-900-0360H	RG-178
450-900-0630H	RG-316
450-900-0631H	RG-316 double shielded

- See page 111 for cable assembly procedure: 9-08
- Part number shown is for gold plated.
- For nickel plate change suffix to "N".

Note: Dimensions shown in inches.