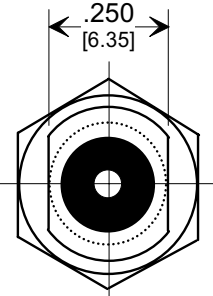
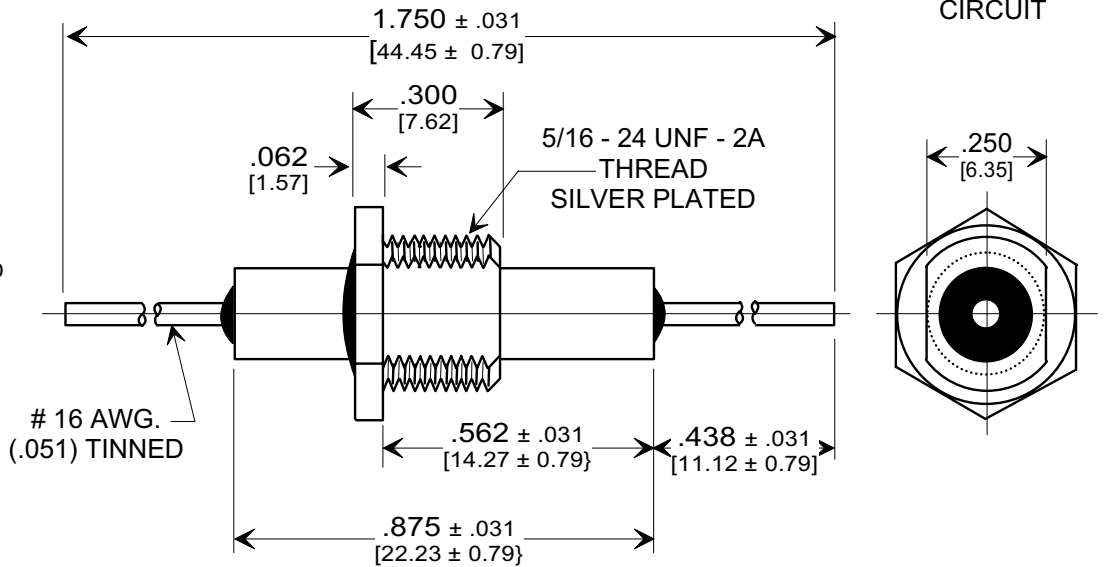
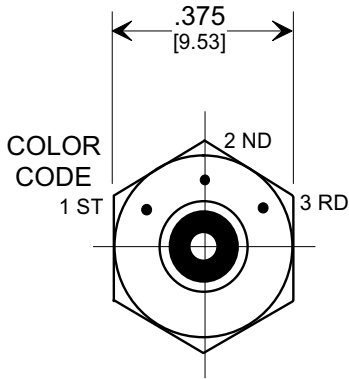
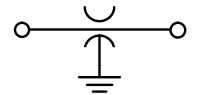
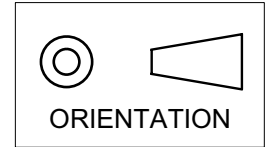


MARKETING SALES DRAWING

DIMENSIONS IN INCHES - DO NOT SCALE THIS DRAWING

DIMENSIONS IN METRIC - []

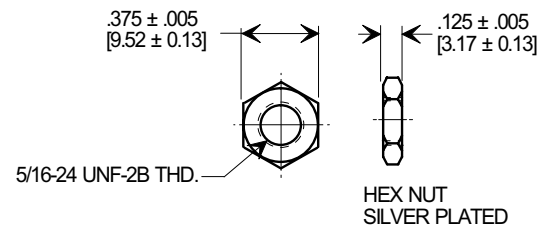
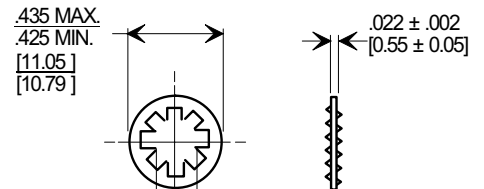
Electrical Testing
per Tusonix standard
test plans and Mil-Std-202
Test Methods.



SPECIFICATIONS

TUSONIX STYLE	2432-002
Cap. Value:	1100 pF
Cap. Tol.:	± 20 %
Temp. Char.:	X7R
Operating Temp.:	-55°C TO 85°C
Working Voltage:	2 KVDC
D.W.V.:	4 KVDC
IR MIN @ 100VDC	10 G Ω
To Tusonix Spec Unless Stated Otherwise	

MOUNTING HARDWARE



REVISION RECORD	Original Release	0
	C.O. 20030527-1-01	

--TOLERANCES-- Unless Otherwise Specified
DECIMAL ± .015 [0.38]
ANGLES ±
TUSONIX TUCSON, ARIZONA

Title HIGH VOLTAGE FEED - THRU CAPACITOR	
Drawn L.E. 05-28-03	Scale 2.5 X
Approved T.C. 05-28-03	
A	2432-002-X7R0-112M