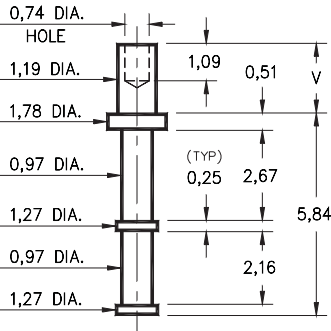


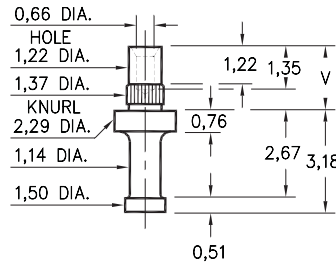
2110



- X -	Board Thickness	Length V
1	0,79	1,24
2	1,57	2,08

2110-X-00-XX-00-00-07-0
Swage mount in 1,32 hole

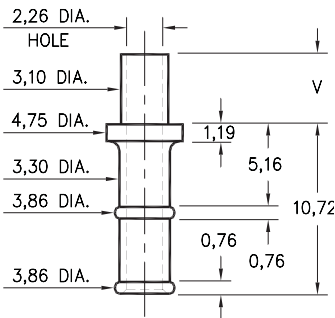
2333



- X -	Board Thickness	Length V
1	1,98	2,62
2	1,57	2,21
3	1,19	1,83

2333-X-00-XX-00-00-07-0
Press-fit and swage in 1,32 mounting hole

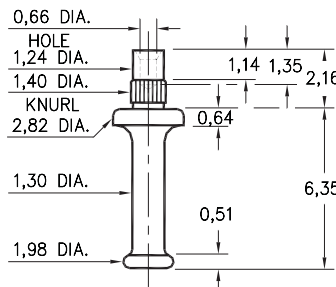
2821



- X -	Board Thickness	Length V
2	1,57	2,77
3	2,39	3,58
4	3,18	4,37

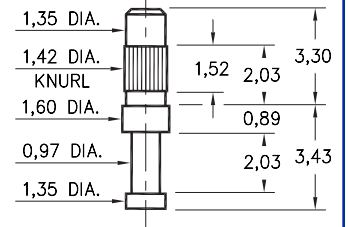
2821-X-00-XX-00-00-07-0
Swage mount in 3,18 hole

2533



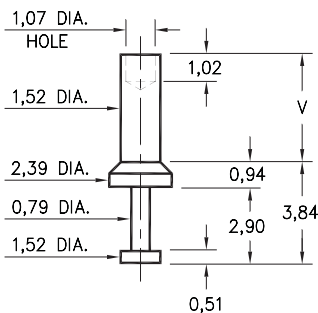
2533-0-00-XX-00-00-07-0
Press-fit & swage in 1,32 mounting hole. For 1,57 thick board

2101

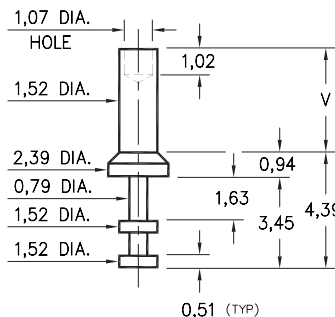


2101-3-00-XX-00-00-07-0
Press-fit in 1,35 mounting hole. For 1,57 to 2,39 thick board

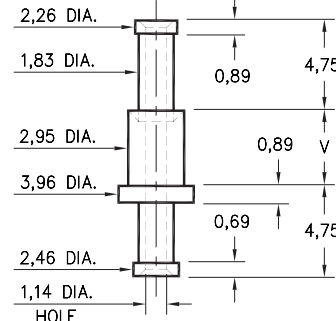
2316/2317/2708



2316-X-00-XX-00-00-07-0
Swage mount in 1,63 hole



2317-X-00-XX-00-00-07-0
Swage mount in 1,63 hole



2708-X-00-XX-00-00-07-0
Swage mount in 3,05 hole

- X -	Board Thickness	Length V
1	0,79	1,57
2	1,57	2,39
3	2,39	3,18
4	3,18	3,96

SPECIFICATIONS

PIN MATERIAL:
Brass Alloy 360, 1/2 Hard
Swage pins are annealed

DIMENSION IN INCHES
TOLERANCES ON:
LENGTHS: ±0,13
DIAMETERS: ±0,05
ANGLES: ± 2°

ORDER CODE: XXXX - X - 00 - XX - 00 - 00 - 07 - 0

BASIC PART #

SPECIFY PIN FINISH:

- 01 5,08µm TIN/LEAD OVER NICKEL
- ◇ 80 5,08µm TIN OVER NICKEL (RoHS)
- ◇ 44 7,62µm SILVER OVER COPPER (RoHS)
- ◇ 50 7,62µm ELECTRO-SOLDER (RoHS) (60/40 SnPb)

