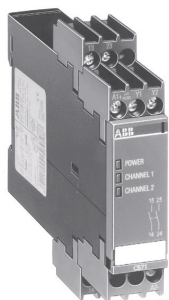


Safety relays

C571 and C571-AC

Ordering details

1SAR 501 020 F 0001



C571

- Auto-start
- Supply voltage V_c at EMERGENCY STOP button or limit switch
- Feedback loop for monitoring of external contactors
- Safety outputs: 2 n/o contacts, positively guided
- 3 LEDs for status indication
- Safety category acc. to EN 954-1: B, 1, 2, 3, 4¹⁾

EMERGENCY STOP monitor and safety gate monitor C571 and C571-AC

Application

The safety relays C571 and C571-AC can be used in EMERGENCY STOP circuits according to EN 418 and in safety circuits according to VDE 0113 Part 1 (11.98) and/or EN 60 204-1 (11.98), e. g. with movable covers and guard doors. Depending on the external connections, safety categories B, 1, 2, 3 or 4¹⁾ according to DIN EN 954-1 are achievable.

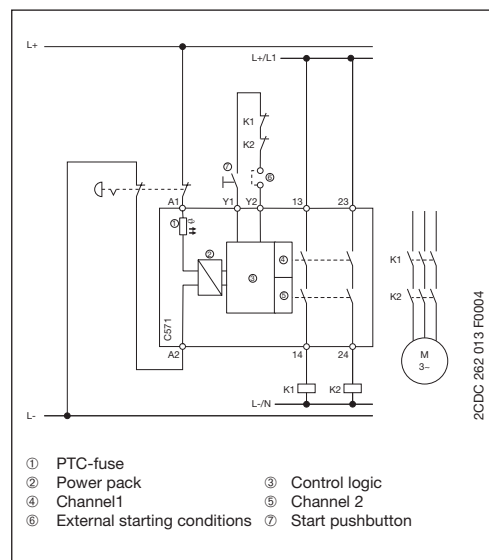
When the safety combination is used in "automatic start" mode, automatic restarting (according to EN 60 204-1, sections 9.2.5.4.2 and 10.8.3) must be prevented by the higher-level control system in the event of EMERGENCY STOP.

Functions

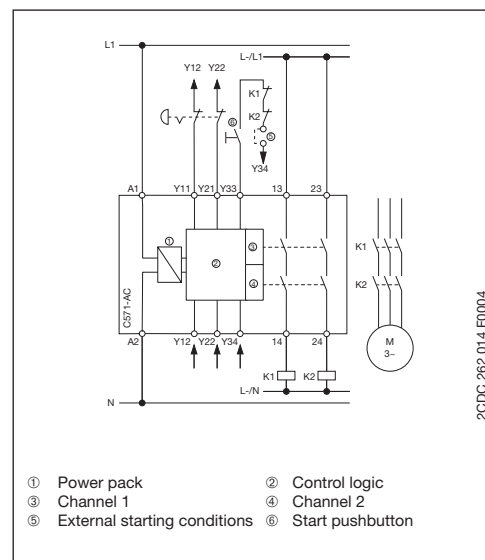
The safety relays C571 and C571-AC have two enabling (safe) circuits which are configured as n/o contacts. The number of enabling circuits can be increased by adding one or more C579 extension units. Three LEDs (Power, Channel 1, Channel 2) indicate the operating state and function.

When the EMERGENCY STOP button or the limit switch is unlocked and when the ON-button is pressed, the internal circuits of the safety relays and the external contactors are checked for proper functioning.

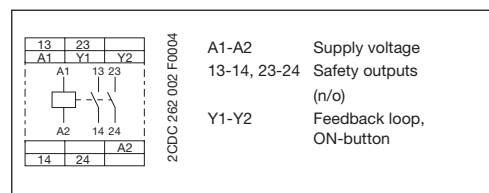
Block diagram C571



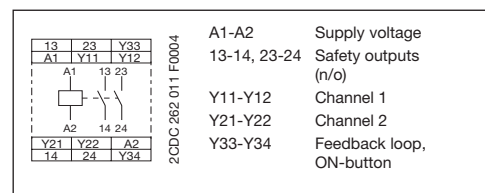
Block diagram C571-AC



Connection diagram C571



Connection diagram C571-AC



Type	Supply voltage U_c	Order code	Pack. unit piece	Price 1 piece	Weight 1 piece kg / lb
C571	24 V DC	1SAR 501 020 R0003	1		0.26 / 0.57
C571	24 V AC/DC	1SAR 501 020 R0001	1		0.26 / 0.57
C571-AC	115 V AC	1SAR 501 020 R0004	1		0.29 / 0.64
C571-AC	230 V AC	1SAR 501 020 R0005	1		0.29 / 0.64

¹⁾ Possible in combination with additional external measures. Information given in brackets only apply if cables and sensors are installed safely and mechanically protected.

• Approvals 144	• Technical data 160
• Dimensional drawings 161	