

New Jersey Semi-Conductor Products, Inc.

1 STERN AVE.
 SPRINGFIELD, NEW JERSEY 07081
 S.A.

TELEPHONE: (201) 376-2922
 (212) 227-6005
 TELEX: 13-8720

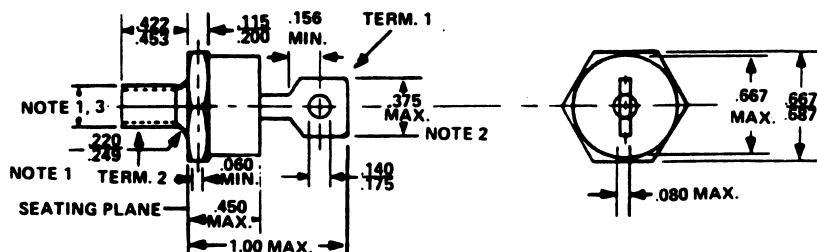
PARAMETERS

1N1190A
 SI RECTIFIER, 20A < I(O)/I(F) s 50A

Description: Si Rectifier, 20A < I(O)/I(F) s 50A

Manufacturer.....	many
Mil/High-Rel? (Y/N).....	
I(out) (If AVG) Max.....	40
@Temp. (test) (xC).....	150
VRRM.....	600
1-Cycle Surge Current (A).....	800
Vf Max.....	1.1
@If (test).....	100
@Temp. (test) for Vf).....	25#
Ir @25xC.....	
@Volts (test) (V).....	600
Ir @ Diff. Temp (A).....	5.0m
@Temp (test) (xC).....	150#
Oper. Temp (xC) Max.....	200#
Pkg Style.....	DO-203AB
Surface Mounted (Y/N).....	N

Case Temperature 2 It(rms)



NOTES:

1. Complete threads to extend to within 2-1/2 threads of seating plane.
2. Angular orientation of this terminal is undefined.
3. 1/4-28 UNF-2A. Maximum pitch diameter of plated threads shall be basic pitch diameter (.2268", 5.74mm). Ref. (Screw Thread Standards for Federal Services 1957 Handbook H28 1957 P1.
4. Minimum flat.

