

.100" DATA RATE CABLE HHSC SERIES

SPECIFICATIONS

For complete specifications see www.samtec.com?HHSC (Call Samtec for specific grounding configurations)

- 38 AWG micro ribbon coax cable
- Vertical and edge mount terminations to cable
- High cable flexing life (> 40,000 cycles when flexed around 1/8" (3,18mm) DIA mandrel)
- Small bend radii (< 2.5mm)
- Current rating: 300 milliamp max
- Temp range: -25°C to +105°C
- Propagation delay: 4.50 nsec/meter
- Customized grounding
- 50Ω Single-Ended coax
- High speed characterization: Call Samtec.



-TU, -TD & -TE Mates with:
SSW, SSQ, SSM, ESW, ESQ, BCS

-SU, -SD & -SE Mates with:
TSW, MTSW, TSM, TSS, ZSS



JTAG (IEEE 1149.1) Compatible

38 AWG micro ribbon coax cable



APPLICATION SPECIFIC

- Other wire AWG
 - Hot plugging
 - Other lengths
 - Other terminations
 - Other sizes
- Call Samtec.

(2,54mm) .100" pitch

Header or Socket Termination

APPLICATIONS

Verify part number with Samtec's Interactive Cable Builder at www.samtec.com/cable_builder/pitch.asp

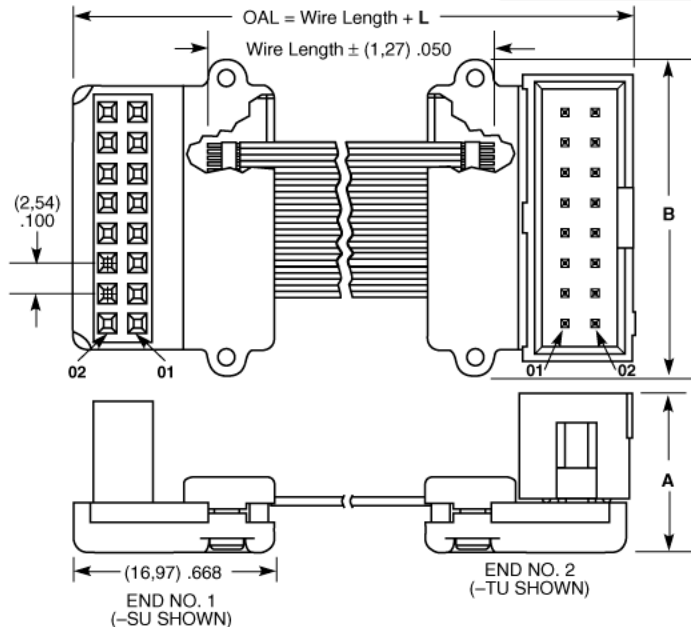


05, 07, 08, 10, 15, 20, 25
(Call for other sizes)

–“XX.XX” = Wire Length in Inches (152mm) 06.00" to (1m) 40.00"

- TU = Terminal Up
- TD = Terminal Down
- TE = Terminal Edge Mount
- SU = Socket Up
- SD = Socket Down
- SE = Socket Edge Mount

END TO END	L
–TU/–TD to –TU/–TD	(22,00) .87
–TU/–TD to –SU/–SD	(21,74) .86
–SU/–SD to –SU/–SD	(21,49) .85
–TU/–TD to –TE	(26,87) 1.06
–SU/–SD to –TE	(26,62) 1.05
–TU/–TD to –SE	(26,49) 1.04
–SU/–SD to –SE	(26,24) 1.03
–TE to –TE	(31,75) 1.25
–TE to –SE	(31,37) 1.24
–SE to –SE	(30,99) 1.22



END	A	B
–TU/–TD	(13,46) .530	(26,76) 1.053
–SU/–SD	(12,70) .500	
–SE	(6,91) .272	(30,80) 1.213
–TE	(9,27) .365	

Note:
This Series is non-standard, non-returnable.

Due to technical progress, all designs, specifications and components are subject to change without notice.

WWW.SAMTEC.COM