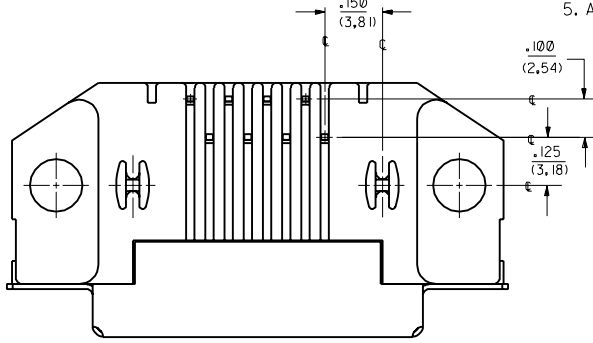
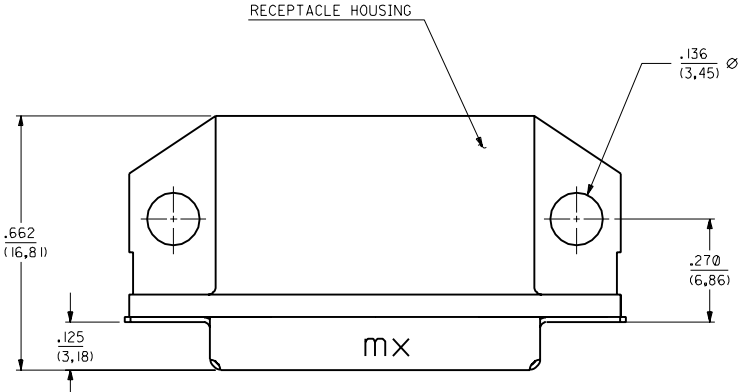


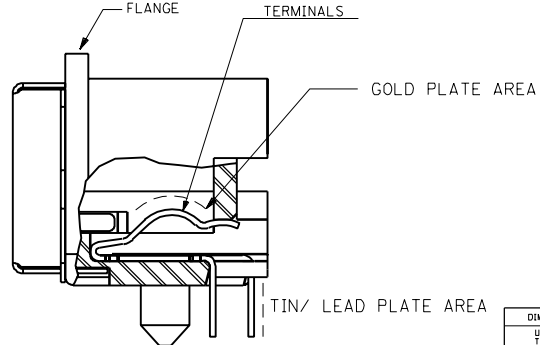
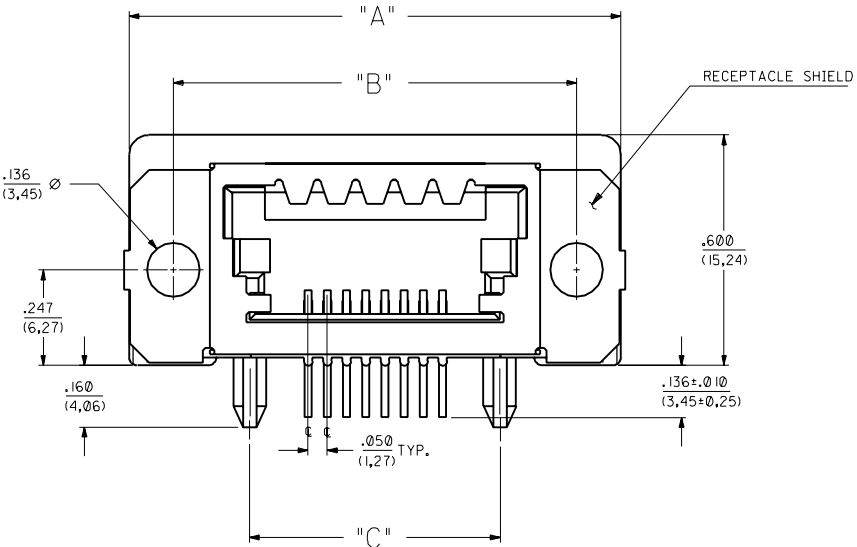
13	12	11	10	9	8	7	6	71355	4	3	2	1			
NON-KEYED VERSION A-71355-10**			KEYING OPTION "1" A-71355-11**		KEYING OPTION "2" A-71355-12**		CKT. SIZE	DIM. "A"		DIM. "B"		DIM. "C"		DIM. "D"	
E.D.P. NUMBER		ENG. NUMBER	E.D.P. NUMBER		ENG. NUMBER			MM	IN.	MM	IN.	MM	IN.	MM	IN.
015-83-0104		A-71355-1004	015-83-0134		A-71355-1104		4	27,30	1,075	21,59	.850	11,43	.450	3,81	.150
015-83-0106		A-71355-1006	015-83-0136		A-71355-1106		6	29,84	1,175	24,13	.950	13,97	.550	6,35	.250
015-83-0108		A-71355-1008	015-83-0138		A-71355-1108		8	32,38	1,275	26,67	1,050	16,51	.650	8,89	.350
015-83-0116		A-71355-1016	015-83-0146		A-71355-1116		16	42,54	1,675	36,83	1,450	26,67	1,050	19,05	.750

NOTES: 1. FOR ILLUSTRATION PURPOSES AN 8 CIRCUIT ASSEMBLY IS SHOWN.

2. MATERIAL:
HOUSING: GLASS FILLED LIQUID CRYSTAL POLYMER (LCP), UL94 V-0, COLOR: BLACK.
SHIELD: BRASS WITH (2.54 MICROMETER)/100 MICROINCH MINIMUM BRIGHT TIN OVER NICKEL.
CONTACTS: PHOSPHOR BRONZE
SELECTIVE GOLD (Au) IN THE CONTACT AREA:
THICKNESS=(1.27 MICROMETER)/50 MICROINCH MINIMUM;
SELECTIVE TIN-LEAD (Sn-Pb) ALLOY IN THE PC TAIL AREA:
THICKNESS=(2.54 MICROMETER)/100 MICROINCH MINIMUM;
NICKEL (Ni) UNDERPLATE OVER ENTIRE PIN.
3. ASSEMBLIES ARE PACKAGED PER SPEC PK-70873-0008.
4. PRODUCT SPEC IS PS-71350-A.
5. APPLICATION SPEC IS AS-71355.



NON-KEYED VERSION SHOWN



71355	GI	CHANGE NOTE 5 PER UDT2002-0476 [CARIKC] 01/09/25
	G	FIX PCB LAYOUT CON UDT2000-0921 BARKER 00/03/29
	F	REVISED NOTES PER ECR #181804 8/22/88 BIXLER
	E	REVISED DIM. "A" PER ECR # 10566 10/26/87 CB/JL
	D	REVISED KEYING PER ECR# 10145 6/4/87 CAB
	C	REMOVED MTG. FLANGE CORE PER ECR # 9314 07/29/86 J.LONG
	B	REVISED PER ECR # 9274 07/10/86 J.LONG
	A	ADDED EDP NO.5 PER ECR # 22328 06/16/86 J.LONG
	2	UPDATE & ADD CIRCUIT PER ECR # 20076 02/25/85 C.BIXLER
	1	
	G	
	GI	

REVISIONS: 2 G, 1 GI, 2

MFG. SH. REV. LTR. REVISIONS

REVISIONS ONLY ON CAD SYSTEM

TITLE: SALES ASSEMBLY SEMCONN SHIELDED RECEPTACLE RIGHT ANGLE, WITHOUT GROUND TABS

MOLEX INCORPORATED U.S.A. SHEET NO. 1 OF 2 DATE 02/11/85

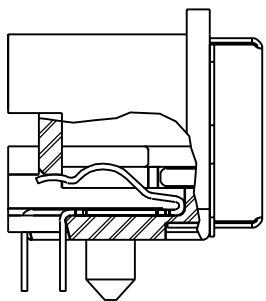
135LEJLL 60532

PART NO. DRWG. NO. SDA-71355-1000

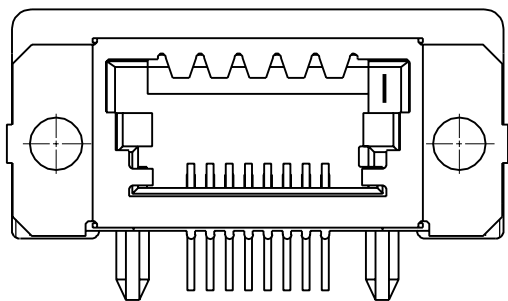
SEE CHART

FILE NAME ST1355X1.DWG

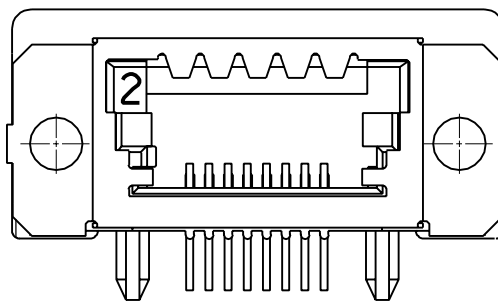
THIS DRAWING CONTAINS INFORMATION THAT IS PROPRIETARY TO MOLEX INC. AND SHOULD NOT BE USED WITHOUT WRITTEN PERMISSION.



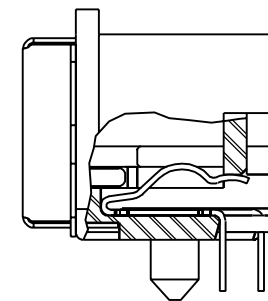
KEYING OPTION "1"



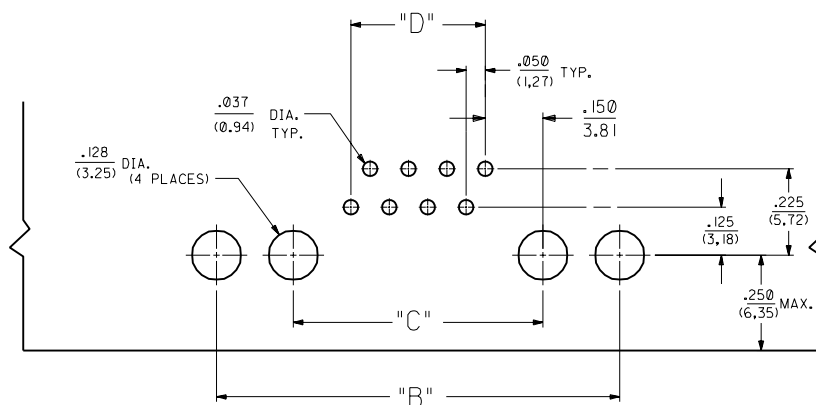
A-71355-11**



KEYING OPTION "2"



A-71355-12**



RECOMMENDED P.C.B. LAYOUT
RECEPTACLE SIDE SHOWN

G	SEE SHEET I
F	SEE SHEET I
D	SEE SHEET I
C	SEE SHEET I
B	SEE SHEET I
A	SEE SHEET I
2	SEE SHEET I

DIMENSIONS SHOWN (METRIC) INCH UNLESS OTHERWISE SPECIFIED TOLERANCES ANGULAR ± 1/2°		REVISIONS																							
<table border="1"> <tr> <th>PLACES</th> <th>INCH</th> <th>METRIC</th> </tr> <tr> <td>3 PLACE</td> <td>± ---</td> <td>---</td> </tr> <tr> <td>2 PLACE</td> <td>± ---</td> <td>± ---</td> </tr> <tr> <td>1 PLACE</td> <td>---</td> <td>± ---</td> </tr> </table>		PLACES	INCH	METRIC	3 PLACE	± ---	---	2 PLACE	± ---	± ---	1 PLACE	---	± ---	<table border="1"> <tr> <th>MFG.</th> <th>SH.</th> <th>REV.</th> <th>LTR.</th> <th>REVISIONS</th> </tr> <tr> <td></td> <td></td> <td></td> <td></td> <td></td> </tr> </table>		MFG.	SH.	REV.	LTR.	REVISIONS					
PLACES	INCH	METRIC																							
3 PLACE	± ---	---																							
2 PLACE	± ---	± ---																							
1 PLACE	---	± ---																							
MFG.	SH.	REV.	LTR.	REVISIONS																					
<table border="1"> <tr> <td>DRWG. BY: J L</td> <td>CHK'D BY: BIXLER</td> <td>FILE NAME: S71355K1</td> <td>DRWG. NO.: SDA-71355-1***</td> </tr> <tr> <td>APP'D BY: IT</td> <td>SCALE: 4 : 1</td> <td>DATE: 02/11/85</td> <td>DIV. SIZE: TC 10</td> </tr> </table>		DRWG. BY: J L	CHK'D BY: BIXLER	FILE NAME: S71355K1	DRWG. NO.: SDA-71355-1***	APP'D BY: IT	SCALE: 4 : 1	DATE: 02/11/85	DIV. SIZE: TC 10	<table border="1"> <tr> <td colspan="2">TITLE: SEMCONN SHIELDED RECEPTACLE ASSEMBLY FLANGED WITH PANEL GROUND</td> </tr> <tr> <td>MOLEX INCORPORATED</td> <td>SHEET NO. 2</td> </tr> <tr> <td>L15LE,ILL. 69532</td> <td>U.S.A.</td> </tr> </table>		TITLE: SEMCONN SHIELDED RECEPTACLE ASSEMBLY FLANGED WITH PANEL GROUND		MOLEX INCORPORATED	SHEET NO. 2	L15LE,ILL. 69532	U.S.A.								
DRWG. BY: J L	CHK'D BY: BIXLER	FILE NAME: S71355K1	DRWG. NO.: SDA-71355-1***																						
APP'D BY: IT	SCALE: 4 : 1	DATE: 02/11/85	DIV. SIZE: TC 10																						
TITLE: SEMCONN SHIELDED RECEPTACLE ASSEMBLY FLANGED WITH PANEL GROUND																									
MOLEX INCORPORATED	SHEET NO. 2																								
L15LE,ILL. 69532	U.S.A.																								
<small>DRAFT WHERE APPLICABLE MUST REMAIN WITHIN DIMENSIONS</small>		<small>THIS DRAWING CONTAINS INFORMATION THAT IS PROPRIETARY TO MOLEX INC. AND SHOULD NOT BE USED WITHOUT WRITTEN PERMISSION.</small>																							