

SPECIFICATIONS

Header Connector

Mechanical

Contact Retention Force: 1.36 Kgf Min.

HM96 Series

R/A, T/H Type

Plug

4.2mm [.165''] Pitch

Electrical

Voltage Rating: 250V

Current Rating: 6A per pin

Dielectric Withstanding Voltage: 1500 VAC

Insulation Resistance: 1000MΩ min.

Physical

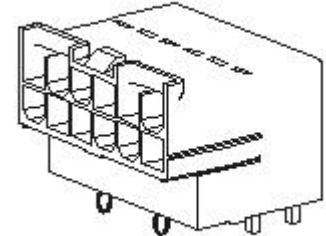
Housing: High Temperature , Thermoplastic, UL 94V-0 Rating in Black Color

Contact: Copper Alloy

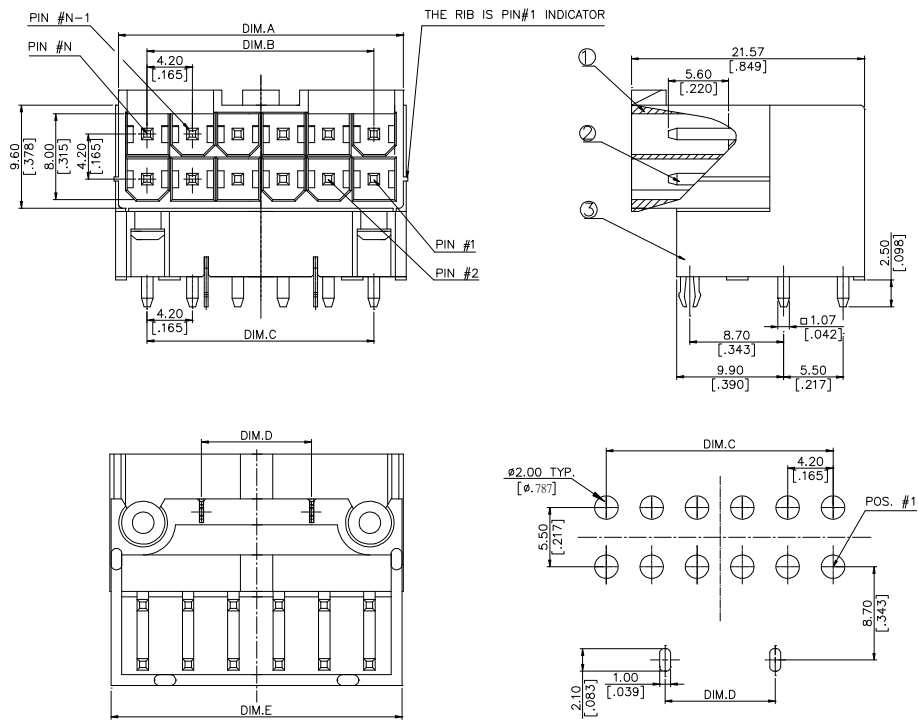
M.H/D: Copper Alloy

Plating: See "ORDERING INFORMATION"

Operating Temperature: -40°C to +105°C



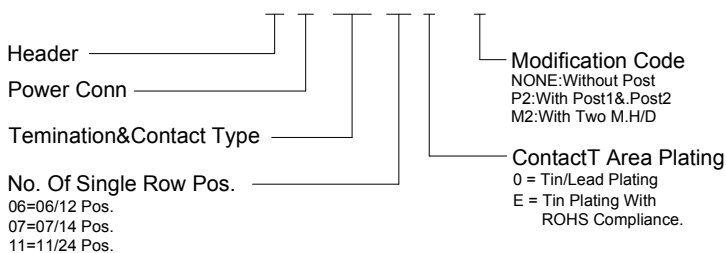
DRAWING



RECOMMENDED P.C.B. HOLES LAYOUT

ORDERING INFORMATION

PRODUCT No. : H M 9 6 ** * - *



HM9611*-P2	11	47.4 [1.866]	42.00 [1.654]	42.00 [1.654]	31.20 [1.228]	47.95 [1.888]
HM9606*	6	26.4 [1.039]	21.00 [.827]	21.00 [.827]		26.95 [1.061]
HM9606*-M2	6	26.4 [1.039]	21.00 [.827]	21.00 [.827]	10.20 [.402]	26.95 [1.061]
HM9607*-M2	7	30.6 [1.205]	25.20 [.992]	25.20 [.992]	14.40 [.567]	31.35 [1.234]
PRODUCT No.	POS.	DIM. A	DIM. B	DIM. C	DIM. D	DIM. E