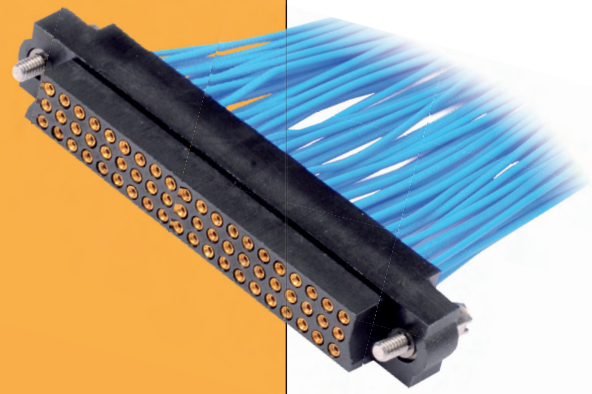


M83 Datamate Connectors

Female Crimp

- ❖ Choice of compatible jackscrews.
- ❖ All contacts are gold finish for full RoHS compliance.
- ❖ See page 71 for configurations including special contacts.
- ❖ Contact datamate@harwin.com for alternative contact configurations.
- ❖ Spare contacts are available - see page 16.



FEMALE CRIMP

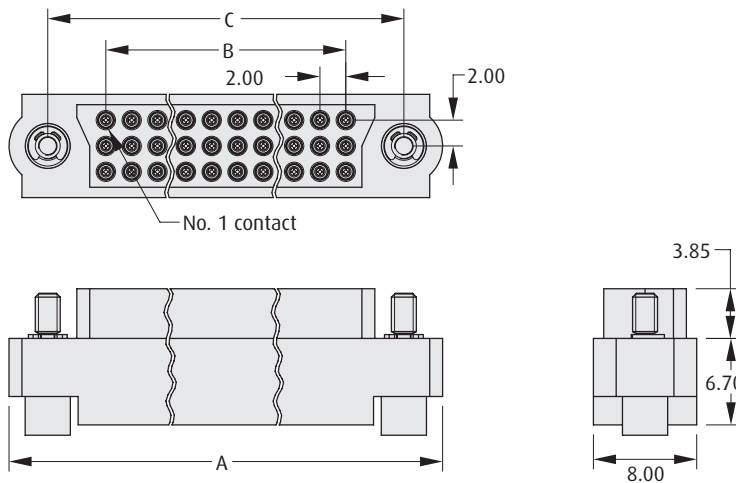


Diagram shown with Jackscrew F2 assembled.

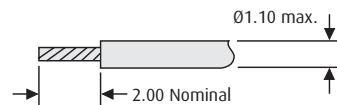
CALCULATION

A	$B + 15$
B	$(\text{Total No. of contacts} - 3) \times 2/3$
C	$B + 9$

TOOLS

Recommended Crimp Tool - M22520/2-01
Positioner - T5747
Contact Insertion/Removal Tool - Z80-280
 See pages 77 to 79
 ❖ Instruction sheets available at www.harwin.com/downloads/instructions

WIRE STRIPPING DETAILS



HOW TO ORDER

M83 - LF XX XX N XX - 0000 - 000

SERIES CODE	M83	TOTAL NO. OF CONTACTS	18,27,36,51,54,60,72,96
CRIMPS	LF		
C1	Small Bore		
D1	Large Bore		
	XX XX		
	N		
	XX		
	- 0000 - 000		
	JACKSCREW		
	00	No Jackscrew	
	Fx	Female Jackscrews - see page 64	

All dimensions in mm.

www.harwin.com

