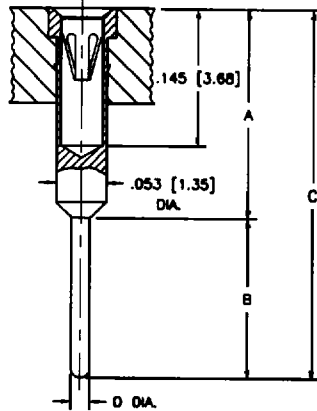


SERIES 111 RAISED INTERCONNECT DIP SOCKET (OPEN FRAME)

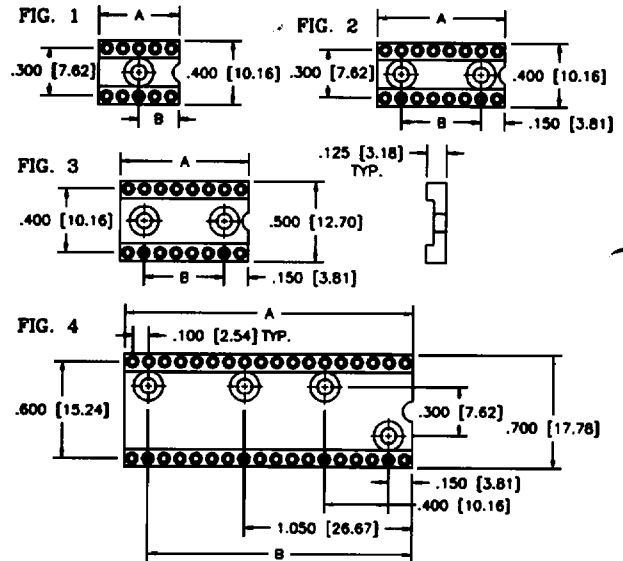
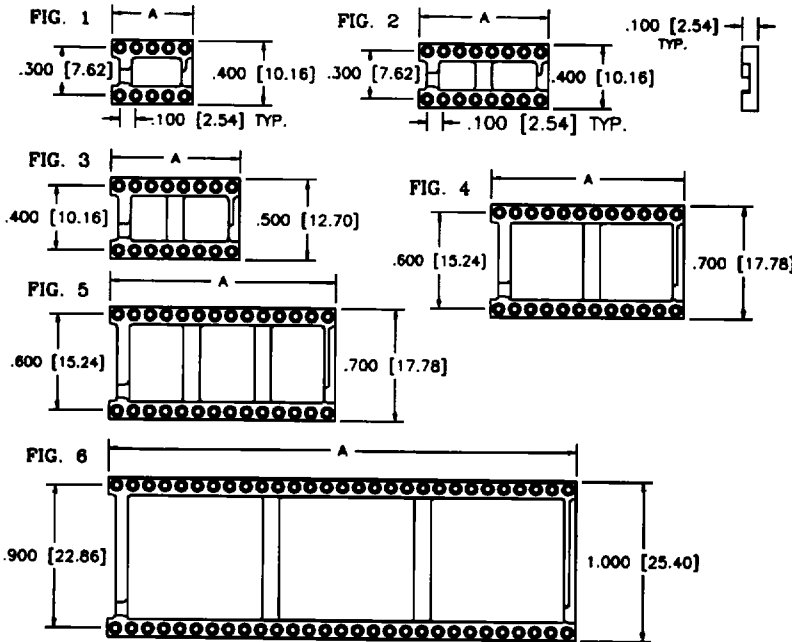
211 RAISED INTERCONNECT DIP SOCKET (SOLID FRAME)

	PIN	DIM "A"	
FIG. 1	6	.300 [7.62]	306
	8	.400 [10.16]	308
	10	.500 [12.70]	310
FIG. 2	14	.700 [17.78]	314
	16	.800 [20.32]	316
	18	.900 [22.86]	318
	20	1.000 [25.40]	320
	22	1.100 [27.94]	322
	24	1.200 [30.48]	324
FIG. 3	28	1.400 [35.56]	328
	16	.800 [20.32]	416
FIG. 4	22	1.100 [27.94]	422
	24	1.200 [30.48]	424
FIG. 5	24	1.200 [30.48]	624
	28	1.400 [35.56]	628
	30	1.500 [38.10]	630
	32	1.600 [40.64]	632
	36	1.800 [45.72]	636
	40	2.000 [50.80]	640
FIG. 6	48	2.400 [60.96]	648
	50	2.500 [63.50]	950
	52	2.600 [66.04]	952
	64	3.200 [81.28]	964

TERMINAL	A	B	C	D
-60	.768 [19.50]	.118 [3.00]	.886 [22.50]	.028 [0.71]
-61	1.181 [29.50]	.118 [3.00]	1.280 [32.50]	.028 [0.71]
-62	.551 [14.00]	.118 [3.00]	.669 [17.00]	.020 [0.51]
-63	.807 [20.50]	.118 [3.00]	.925 [23.50]	.028 [0.71]
-65	.512 [13.00]	.118 [3.00]	.630 [16.00]	.018 [0.46]
-80	.238 [6.00]	.126 [3.20]	.362 [9.20]	.024 [0.60]
-82	1.004 [25.50]	.118 [3.00]	1.122 [28.50]	.018 [0.46]
-84	.307 [7.80]	.126 [3.20]	.433 [11.00]	.024 [0.60]
-86	.354 [9.00]	.126 [3.20]	.480 [12.20]	.024 [0.60]
-87	.433 [11.00]	.118 [3.00]	.551 [14.00]	.028 [0.71]



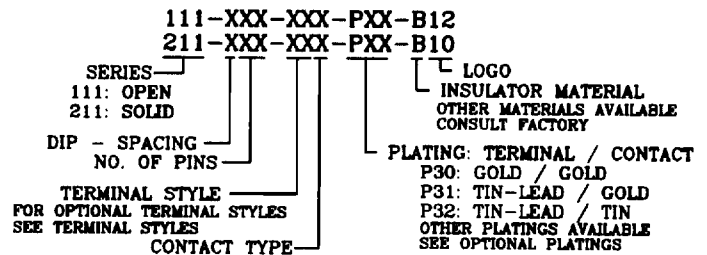
	PIN	DIM "A"	DIM "F"	
FIG. 1	6	.300 [7.62]	.150 [3.81]	306
	8	.400 [10.16]	.200 [5.08]	308
	10	.500 [12.70]	.250 [6.35]	310
FIG. 2	14	.700 [17.78]	.400 [10.16]	314
	16	.800 [20.32]	.500 [12.70]	316
	18	.900 [22.86]	.600 [15.24]	318
	20	1.000 [25.40]	.700 [17.78]	320
	24	1.200 [30.48]	.900 [22.86]	324
	16	.800 [20.32]	.500 [12.70]	416
FIG. 3	22	1.100 [27.94]	.800 [20.32]	422
	24	1.200 [30.48]	.900 [22.86]	424
FIG. 4	24	1.200 [30.48]		624
	28	1.400 [35.56]		628
	30	1.500 [38.10]		630
	32	1.600 [40.64]		632
	36	1.800 [45.72]	1.650 [41.91]	636
	40	2.000 [50.80]	1.650 [41.91]	640



CONTACT TYPE

S: STANDARD DIP	INSERTION FORCE	9.0 oz. AVG.
	WITHDRAWAL FORCE	2.0 oz. MIN.
M: STANDARD PGA	INSERTION FORCE	1.8 oz. MAX.
	WITHDRAWAL FORCE	0.5 oz. MIN.
L: INTERSTITIAL PGA	INSERTION FORCE	1.0 oz. MAX.
	WITHDRAWAL FORCE	0.3 oz. MIN.
H: HIGH FORCE	INSERTION FORCE	18.3 oz. MAX.
	WITHDRAWAL FORCE	4.2 oz. MIN.

ORDERING INFORMATION



TECHNICAL SPECIFICATIONS

MATERIAL	INSULATOR	GLASS FILLED POLYESTER
	TERMINAL CONTACT	UL 94V-0 LISTED BRASS PER ASTM-B16 BeCu PER ASTM-B194
	OPERATING TEMP.	-65°C TO +125°C
CONTACT FORCES	INSERTION	STANDARD 9 oz. AVG.
	WITHDRAWAL	STANDARD 2 oz. MIN.

© ANDON 1997

DIMENSIONS ARE SHOWN IN INCHES [MILLIMETERS].

WE RESERVE THE RIGHT TO CHANGE SPECIFICATIONS WITHOUT NOTICE.

ANDON ELECTRONICS CORPORATION 4 COURT DRIVE, LINCOLN, RI. 02865, USA

8 TEL. (401) 333-0388 / FAX (401) 333-0287

E-MAIL US AT AECANDOL@aol.com