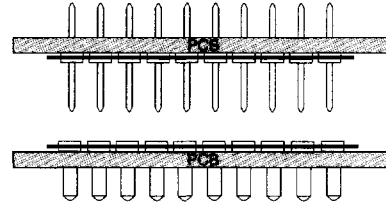
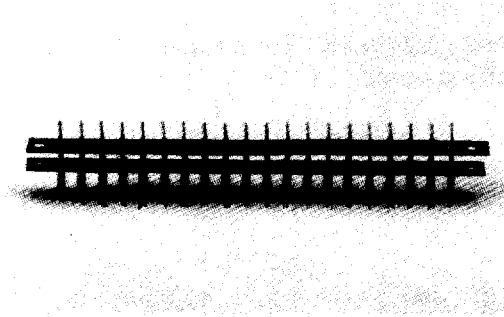


2 mm (.079") Pitch Board to Board Interconnections



Features:

- Supplied in high temperature Peel-A-Way® removable terminal carrier.
- Sockets and adapters are designed in mating pairs.
- 2 mm (.079") centers pin to pin.
- High reliability screw machine terminals with closed end construction for 100% anti-wicking of solder.
- For surface mount board to board options consult factory.

Terminals and Contacts:

Terminal: Brass - Copper Alloy 360, ASTM-B-16

Contact: Beryllium Copper - Copper Alloy 172, ASTM-B-194

Plating:

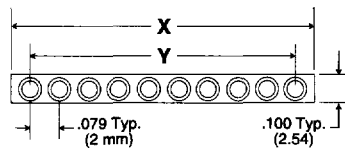
Terminal: Gold over Nickel or Tin-Lead over Nickel

Contact: Gold over Nickel or Tin-Lead over Nickel

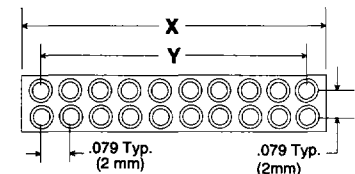
Body Material:

Polyimide Film, Temp. range -269°C to 400°C (-452°F to 752°F)

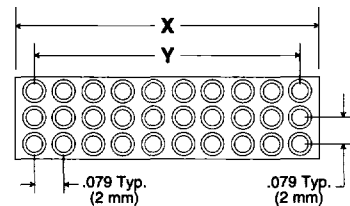
Single Row KMA - Male / KMS - Female



Dual Row KMB - Male / KMD - Female

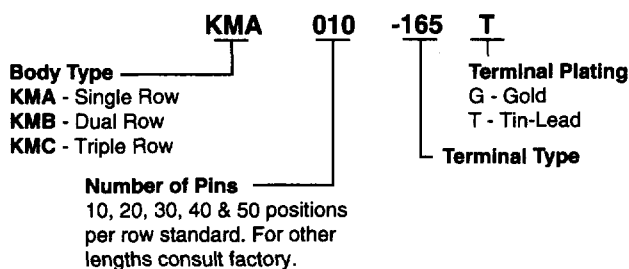


Triple Row KMC - Male / KMT - Female

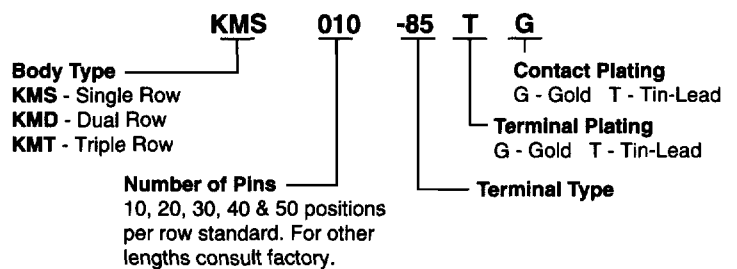


# of Pins Per Row	X	Y
10	.866 (22.00)	.709 (18.00)
20	1.6540 (42.00)	1.500 (38.00)
30	2.441 (62.00)	2.283 (58.00)
40	3.228 (82.00)	3.070 (78.00)
50	4.016 (102.00)	3.858 (98.00)

How To Order - Male



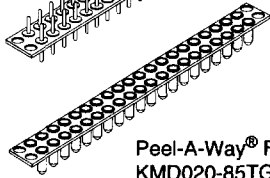
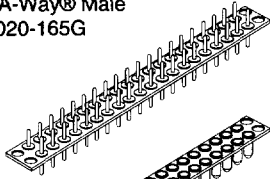
How To Order - Female





2 mm (.079") Pitch Board to Board Interconnections

Peel-A-Way® Male
KMB020-165G



Peel-A-Way® Female
KMD020-85TG

Figure 1
Thru Hole

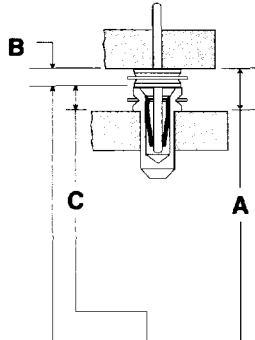
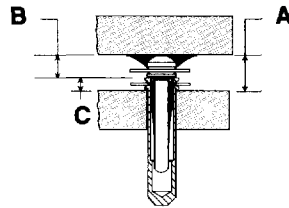


Figure 2
Surface Mount



Order One Each Male & Female
To Get the Required "A" Dim.

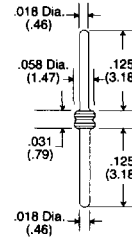
B	C	A	Male Part #	Female Part #
.031 (.79)	.015 (.38)	.046 (1.17)	KMB020-165G	KMD020-210TG
.031 (.79)	.015 (.38)	.046 (1.17)	KMB020-525G	KMD020-210TG
.031 (.79)	.031 (.79)	.062 (1.57)	KMB020-165G	KMD020-85TG
.031 (.79)	.031 (.79)	.062 (1.57)	KMB020-525G	KMD020-85TG
.031 (.79)	.031 (.79)	.062 (1.57)	KMB020-165G	KMD020-176TG
.031 (.79)	.031 (.79)	.062 (1.57)	KMB020-525G	KMD020-176TG
.070 (1.78)	.015 (.38)	.085 (2.16)	KMB020-321G	KMD020-210TG
.085 (2.16)	.015 (.38)	.100 (2.54)	KMB020-322G	KMD020-210TG
.070 (1.78)	.031 (.79)	.101 (2.57)	KMB020-321G	KMD020-85TG
.070 (1.78)	.031 (.79)	.101 (2.57)	KMB020-321G	KMD020-176TG
.085 (2.16)	.031 (.79)	.116 (2.95)	KMB020-322G	KMD020-85TG
.085 (2.16)	.031 (.79)	.116 (2.95)	KMB020-322G	KMD020-176TG
.031 (.79)	.155 (3.94)	.186 (4.72)	KMB020-165TG	KMD020-95TG
.031 (.79)	.155 (3.94)	.186 (4.72)	KMB020-525TG	KMD020-95TG
.070 (1.78)	.155 (3.94)	.225 (5.72)	KMB020-321G	KMD020-95TG
.085 (2.16)	.155 (3.94)	.240 (6.10)	KMB020-322G	KMD020-95TG

20 Position Dual Row Part Numbers Shown
For Additional Ordering Information See Page 56

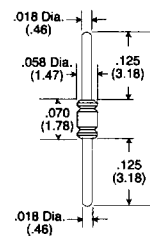
If required "A" dimension is not shown, consult factory.

Male Terminal Information

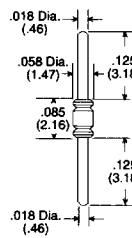
Type -165



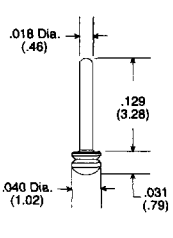
Type -339



Type -340

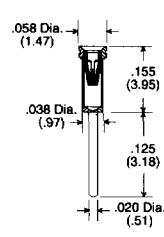


Type -525

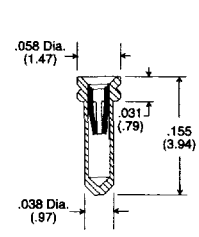


Female Terminal Information

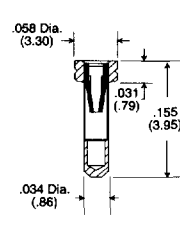
Type -95



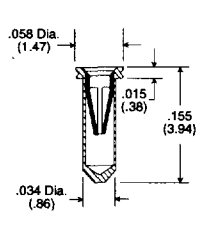
Type -85



Type -176



Type -210



Quick turn delivery available on standard terminal types.

Additional terminal types available.
See terminal section for detailed terminal information.