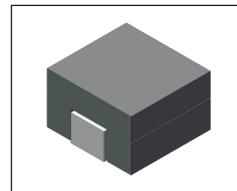


# SMT Power Inductor

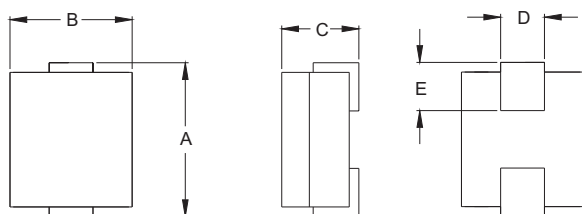
## HCB0730 Type

### Features

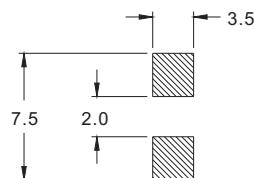
- RoHS compliant.
- Small size, low profile, SMD type.
- Magnetic shielded, suitable for high density mounting..
- High energy storage and low DCR.
- Provided with embossed carrier tape packing.
- Ideal for power source circuits, DC-DC converter, DC-AC inverters inductor applications.



### Mechanical Dimension :



### RECOMMENDED PAD PATTERNS



UNIT : mm/inch  
A = 7.0 / 0.276 Max.  
B = 7.0 / 0.276 Max.  
C = 3.0 / 0.118 Max.  
D = 2.5 / 0.098  
E = 2.0 / 0.079

### Electrical Characteristics : At 25°C: 100KHz, 1V

PART NO.	L <sup>1</sup> (nH)	DCR (mΩ) MAX	I <sub>sat</sub> <sup>2</sup> (Adc)	I <sub>rms</sub> <sup>3</sup> (Adc)
HCB0730-470	47	0.3	42	39
HCB0730-680	68	0.3	32	39
HCB0730-820	82	0.3	26	39
HCB0730-101	100	0.3	22	39
HCB0730-121	120	0.3	18	39

1. Tolerance of inductance is  $\pm 20\%$ .
2. I<sub>sat</sub> is the DC current which cause the inductance drop approximately 30% of its nominal inductance without current.
3. I<sub>rms</sub> is the DC current which cause the surface temperature of the part increase less than 45°C.
4. Operating temperature : -20°C to 105°C ( including self-temperature rise ).



DELTA ELECTRONICS, INC.

(TAOYUAN PLANT CPBG) 252, SAN YING ROAD, KUEISAN INDUSTRIAL ZONE, TAOYUAN SHIEN, 333, TAIWAN, R.O.C.  
TEL: 886-3-3591968; FAX: 886-3-3591991  
<http://www.deltaww.com>