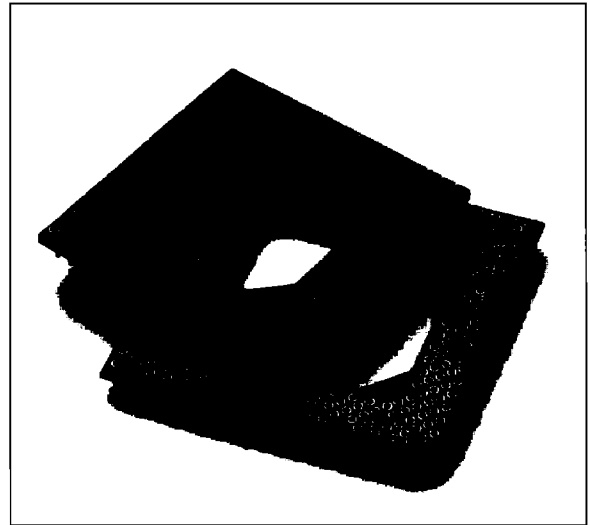


GSM Series Surface Mount (LIF) PGA Sockets

Augat's Surface Mount PGA Sockets offers unique features.

- “Butt Style” terminals with Augat’s patented floating feature assures compliancy to the printed circuit board surface.
- The socket includes the Augat SUPERLIF™ low insertion force 1.3 oz. contact.
- High temperature insulators allow the sockets to be soldered with vaporphase and infrared reflow soldering process.



GSM Series Sockets

POPULAR PIN GRID ARRAY FOOTPRINTS / ORDERING INFORMATION

INTEL		NATIONAL SEMI		MOTOROLA	
80286	GSM068-1F1132-V	NS6212U0	GSM068-1F1006-V	MC68020	GSM114-1F1345-V
80386	GSM132-1F1414-V	NS6218U0	GSM068-1F1006-V	MC68030	GSM128-1F1359-V
80486	GSM168-1F1715-V	NS6225U0	GSM068-1F1006-V	MC68040	GSM179-1F1818-V
80486SX	GSM169-1F1708-V	NS6232U0	GSM068-1F1006-V	MC68440	GSM068-1F1006-V
PENTIUM #3	GSM237-1F1925-V	NS6244U0	GSM068-1F1006-V	MC68442	GSM068-1F1006-V
PENTIUM #2	GSM238-1F1916-V	MOTOROLA		MC68450	GSM068-1F1006-V
PENTIUM #5	GSM320-1C37A9-V	MC68000	GSM068-1F1006-V	MC68451	GSM068-1F1006-V
NATIONAL SEMI		MC68010	GSM084-1F1006-V	MC68461	GSM149-1F1517-V
NS32332	GSM084-1F1002-V			MC68012	GSM084-1F1003-V
NS32332RT	GSM084-1F1003-V			MC68605	GSM084-1F1002-V
NS3282	GSM124-1F1308-V			MC68824	GSM084-1F1002-V
				MC68851	GSM132-1F1357-V
				MC68881	GSM068-1F1006-V
				MC68882	GSM068-1F1006-V
				MCA1200ECL	GSM072-1F1123-V

Augat has a wide variety of application-specific PGA and IPGA sockets available (Consult factory)

©Augat Inc. Printed in USA 699240 5327 Rev. 3
Specifications subject to change without notice

AUGAT INC., INTERCONNECTION PRODUCTS DIVISION
452 John Dietsch Blvd., P.O. Box 2510, Attleboro Falls, MA 02703 USA
(508) 699-9800 FAX: (800) 533-2526

AUGAT®
Quality
and Innovation
Interconnection Products Division

AUG15022

GSM Series Surface Mount (LIF) PGA Sockets

Performance Characteristics

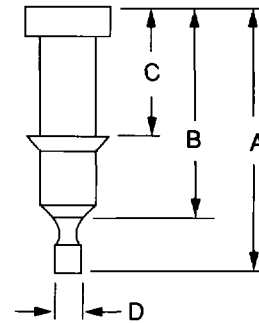
Contact Resistance: 10 Milliohms
 Contact Rating: 3 Amps
 Capacitance: (Contact to Contact) 1.0 pF per MIL-STD-202, Method 305
 Humidity: Passed MIL-STD-1344, Method 1002, Condition II
 Vibration: Passed MIL-STD-1344, Method 2005, Condition VD, 11.6 G's (RMS)
 Shock: Passed MIL-STD-1344, Method 2004, Condition C, 100 G's
 Insulation Resistance: 5000 Megohms min.@500VAC per MIL-STD-1344, Method 3003
 Dielectric Withstanding Voltage: (DWV) 1000 Volts (RMS) per MIL-STD-1344, Method 3001
 Operation Temperature: Gold inner contact -55° C to +125° C
 Solderability: Passed MIL-STD-202F, Method 208
 Insertion Force: (Above 150 Pins) 37 Grams average with a 0,457mm (.018") Polished Steel Pin
 Withdrawal Force: (Above 150 Pins) 15 Grams average with a 0,457mm (.018") Polished Steel Pin
 Insertion Force: (Below 150 Pins) 50 Grams average with a 0,457mm (.018") Polished Steel Pin
 Withdrawal Force: (Below 150 Pins) 20 Grams average with a 0,457mm (.018") Polished Steel Pin

TABLE 1. SLEEVE TYPES mm/inch

BUTT STYLE FLOATING SLEEVES					
DESIGNATION	PITCH	DIMENSIONS			
		A	B	C	D
F	2,54 (.100)	5,54 (.218)	4,19 (.165)	2,69 (.106)	0,736 (.029)
C	1,27 (0.50) X 2,54 (.100)	5,54 (.218)	4,19 (.165)	1,90 (.075)	0,635 (.025)

TABLE 2. (PLATING FINISHES)

PLATING DESIGNATION	CONTACT PLATING	SLEEVE PLATING
1	30µ" Gold	90/10 Tin/Lead
3	Tin/Lead	90/10 Tin/Lead



PART NUMBER EXAMPLE

