

D

NOTES:

① PRODUCT NUMBERING CODE:

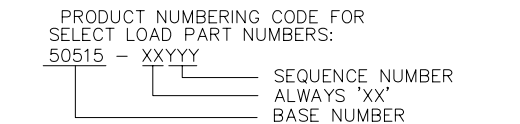
50515 - X YYY Z

TAIL LENGTH (NOTE 5)

NO. OF POSITIONS (NOTE 2)

PLATING (NOTE 4)

BASE NUMBER



③ HOUSING MATERIAL: GLASS AND MINERAL FILLED  
HIGH TEMP. THERMOPLASTIC. FLAME RETARDANT PER  
UL94V-0. COLOR: BLACK.  
PIN MATERIAL: PHOS BRONZE

④ PLATING CONTACT AREA OPTIONS:  
A = 50u" Ni UNDER ALL WITH 30u" Au ON CONTACT AREA, SnPb ON PCB INTERFACE AND Au FLASH ON ALL OTHER AREAS.  
C = 50u" Ni UNDER ALL WITH 30u" Au ON CONTACT AREA, SnPb ON PCB INTERFACE, 30u" ON TAIL SIDE CONTACT AREA, AND Au FLASH ON ALL OTHER AREAS.

⑤. TAIL LENGTH OPTIONS:  
FOR PLATING OPTION "A":  
A = .177/4.5  
G = .250/6.35

FOR PLATING OPTION "C":  
C = .533/13.54  
D = .733/18.62

⑥.  $\phi.0453/1.151$  DRILLED HOLE PLATED WITH  $.0003/.007$  MIN. SnPb OVER  $.001/.03$  to  $.003/.08$  Cu. PLATING TO ACHIEVE A  $\phi.040 \pm .003/1.02 \pm .08$  HOLE.

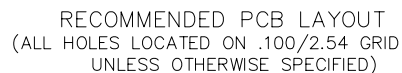
⑦. TO ASSURE PROPER INSTALLATION: TOOLING, AS SPECIFIED IN INSTRUCTION MANUAL 155915-001 MUST BE USED. PIN MATING LENGTH WILL BE  $\pm .002/.05$  AFTER INSTALLATION.

⑧. MANUFACTURERS NAME, PART NUMBER AND LOT CODE TO APPEAR ON THIS SURFACE PER BUS-12-108.

9. FOR DOCUMENTATION MENU, SEE BUS-01-057.

⑩ POWER PIN LOCATOR (REF. 50234) TO BE REMOVED AFTER INSTALLATION.

⑪ REFERENCE 50804 FOR F.M.L.B. OPTIONS AND WORKSHEET.

form: A3