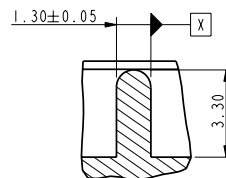
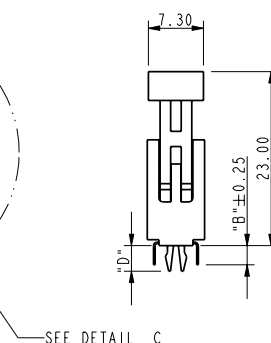
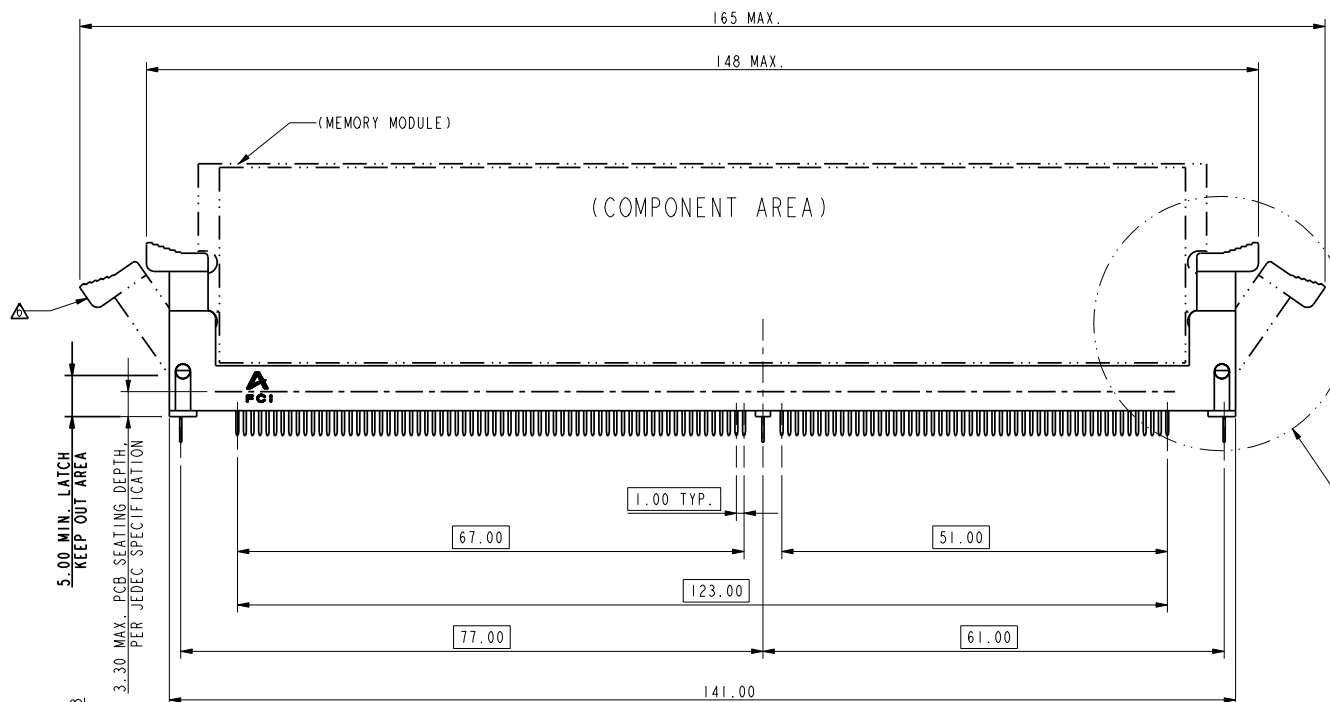
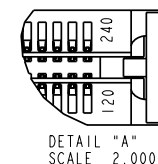
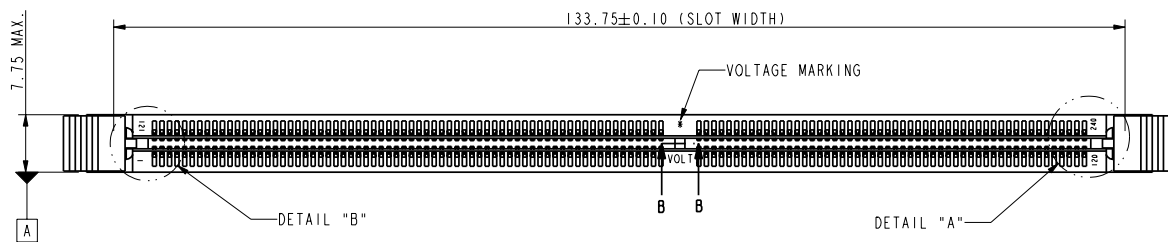
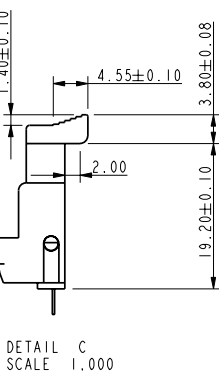
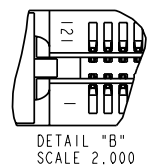


Tous droits strictement réservés. Reproduction ou communication à des tiers interdite sous quelque forme que ce soit sans autorisation écrite du propriétaire. Propriété de FCI. Droits de reproduction FCI.

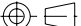

FCI

All rights strictly reserved. Reproduction or issue to third parties in any form, whether, is not permitted without written authority from the proprietor. Property of FCI. Copyright FCI.



SECTION B-B  
SCALE 3.500

| rev | ecn no   | dr | date     |
|-----|----------|----|----------|
| H   | T04-0146 | RC | 07/04/05 |
| J   | T04-0174 | RC | 08/09/05 |
| K   | T05-0265 | RC | 11/28/05 |
| L   | T05-0273 | RC | 12/07/05 |
| M   | T05-0297 | RC | 01/05/06 |
| N   | T06-0006 | RC | 01/18/06 |

|   |              |          |                        |  |                  |          |              |
|---|--------------|----------|------------------------|--|------------------|----------|--------------|
| <div><div><div>A</div><div>FCI</div></div></div> <div>www.fciconnect.com</div> <div>✓</div> <div>tolerance</div> <div><div>projection</div><div></div><div><div>mm</div><div></div></div></div> |              |          |                        |  |                  |          |              |
| Dr  | WENDY CHEN   | 12/24/03 | Product family: DDR II |  | size             | A4       | Scale        |
| Eng   | RICHARD CHIU | 12/24/03 | Spec ref               |  |                  |          | 0.500        |
| Chr   | PAUL WANG    | 12/24/03 | Material               |  | ECN              | T06-0006 |              |
| Appr  | JOSEPH HSIA  | 12/24/03 |                        |  |                  |          |              |
| title   |              |          | DDR II 240P, FBD       |  | dwg no           |          | Rev          |
|   |              |          |                        |  | 10037402         |          | N            |
| catalog no  |              |          | BDM: RevN              |  | CUSTOMER DRAWING |          | sheet 1 of 4 |

PDM: Rev:N

STATUS Released

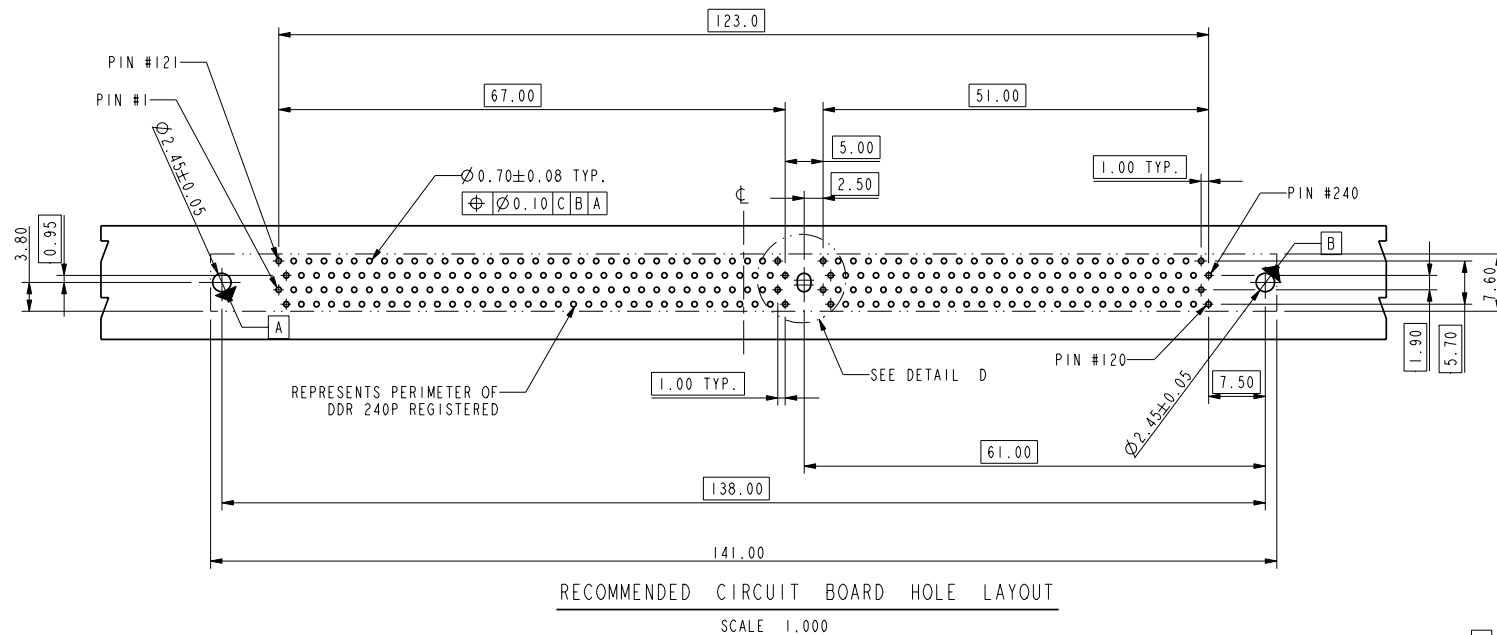
Printed: Apr 15, 2006



Tous droits strictement réservés. Reproduction ou communication à des tiers interdite sous quelque forme que ce soit sans autorisation écrite du propriétaire. Propriété de FCI. Droits de reproduction FCI.

FCI

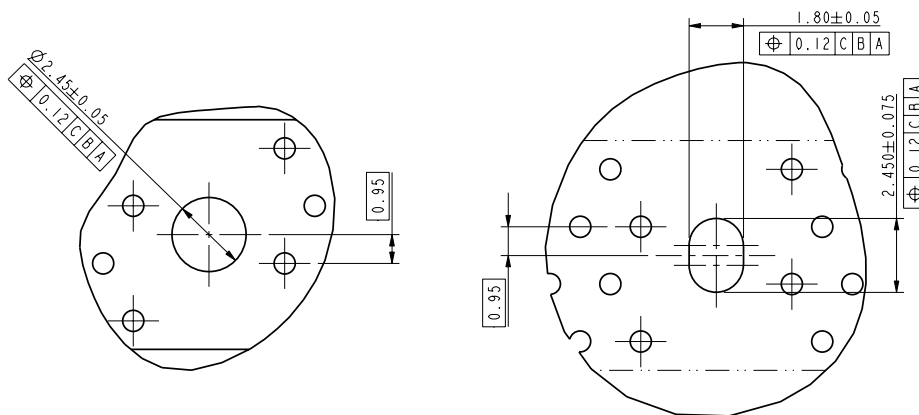
All rights strictly reserved. Reproduction or issue to third parties in any form, whether, is not permitted without written authority from the proprietor. Property of FCI. Copyright FCI.



DETAIL D  
SCALE 4.000

OPTION 1  
CENTER ROND HOLE

OPTION 2  
CENTER SLOT



|                               |              |          |                        |            |              |
|-------------------------------|--------------|----------|------------------------|------------|--------------|
| <b>FCI</b> www.fciconnect.com |              |          | tolerance              | projection | mm           |
| Dr                            | WENDY CHEN   | 12/24/03 | Product family: DDR II | size       | A4           |
| Eng                           | RICHARD CHIU | 12/24/03 | Spec ref               | Scale      | 0.500        |
| Chr                           | PAUL WANG    | 12/24/03 | Material               | ECN        | T06-0006     |
| Appr                          | JOSEPH HSIA  | 12/24/03 |                        |            |              |
| title                         |              |          | DDR II 240P, FBD       |            | Rev.         |
| catalog no                    |              |          | dwg no                 |            | N            |
|                               |              |          | 10037402               |            |              |
|                               |              |          | CUSTOMER DRAWING       |            | sheet 3 of 4 |

PDM: Rev-N

STATUS Released

Printed: Apr 15, 2006

10037402-□□□□□

STYLE : MECHAMICAL KEYING

1 : 1.8 VOLT. W/TYPE "C"  
2 : 2.5 VOLT. W/TYPE "L"  
3 : X.X VOLT. W/TYPE "R"

METAL CLIP  
(WITH NI 1.27 um MIN. PLATING)

1 : WITH METAL CLIP + DIM."D"=3.05  
2 : WITH METAL CLIP + DIM."D"=3.56  
3 : WITH METAL CLIP + DIM."D"=3.43

TAIL LENGTH

| CODE | DIM. "B" | PCB THICKNESS    |
|------|----------|------------------|
| 0    | 2.54     | 1.47 mm (0.058") |
| 1    | 2.67     | 1.60 mm (0.063") |
| 2    | 3.18     | 2.36 mm (0.093") |
| 3    | 4.00     | 3.18 mm (0.125") |

PLATING


| CODE | CONTACT                    | SOLDERTAIL                     | UNDERPLATE                             |
|------|----------------------------|--------------------------------|--|
| 2    | 15 u"(0.38um)<br>MIN. GOLD | 100u"(2.54um)<br>MIN. TIN/LEAD | 50u"(1.27um)<br>MIN. NICKEL<br>OVERALL |
| 3    | 30u"(0.76um)<br>MIN. GOLD  |                                |  |
| 4    | 3u"(0.076um)<br>MIN. GOLD  |                                |  |
| 7LF  | 15u"(0.38um)<br>MIN. GOLD  | 100u"(2.54um)<br>MIN. 100% TIN | 50u"(1.27um)<br>MIN. NICKEL<br>OVERALL |
| 8LF  | 30u"(0.76um)<br>MIN. GOLD  |                                |  |
| 9LF  | 3u"(0.076um)<br>MIN. GOLD  |                                |  |
| 2N   | 15 u"(0.38um)<br>MIN. GOLD | 100u"(2.54um)<br>MIN. TIN/LEAD | 90u"(2.29um)<br>MIN. NICKEL<br>OVERALL |
| 3N   | 30 u"(0.76um)<br>MIN. GOLD |                                |  |
| 4N   | 3 u"(0.076um)<br>MIN. GOLD |                                |  |
| 7NLF | 15 u"(0.38um)<br>MIN. GOLD | 100u"(2.54um)<br>MIN. 100% TIN | 90u"(2.29um)<br>MIN. NICKEL<br>OVERALL |
| 8NLF | 30 u"(0.76um)<br>MIN. GOLD |                                |  |
| 9NLF | 3 u"(0.076um)<br>MIN. GOLD |                                |  |

COLOR OF HOUSING AND EJECTOR

0 : BLACK HOUSING + IVORY EJECTOR  
1 : BLUE HOUSING + IVORY EJECTOR  
2 : BLACK HOUSING + BLACK EJECTOR  
3 : IVORY HOUSING + IVORY EJECTOR

NOTE:

- MATERIAL:  
HOUSING: HIGH PERFORMANCE RESINS, GLASS FILLED UL94V-0 RATED.  
EJECTOR: HIGH PERFORMANCE RESINS, GLASS FILLED UL 94V-0 RATED.  
TERMINAL : COPPER ALLOY.  
METAL CLIP: COPPER ALLOY.
- PRODUCT SPECIFICATION: GS-12-300.  
⚠ DIMENSIONS APPLICABLE WHEN COMPONENTS MOUNTED ON ONE OR BOTH SIDES.  
⚠ CARD THICKNESS APPLIES ACROSS TABS AND INCLUDES PLATING AND/OR MEALIZATION STRAIGHTNESS CALLOUT APPLIES TO ZONE DEFINED BY THE 4.00 CONTACT AREA DIMENSION FOR THE ENTIRE LENGTH OF 133.35.  
⚠ BOARD OF COMPONENT AREA.  
⚠ LATCH DESIGN INCLUDES COMPLEMENTARY FEATURE TO ACCOMMODATE MODULE END NOTCHES AS DEFIND IN DETAIL A OF P.2 AND AS SPECIFIED IN MO-256.
- THIS PRODUCT MEETS EUROPEAN UNION DIRECTIVES AND OTHER COUNTRY REGULATIONS AS DESCRIBED IN GS-22-008.
- THE HOUSING WILL WITHSTAND EXPOSURE TO 260°C PEAK TEMP. FOR 10 SECONDS IN A WAVE SOLDER APPLICATION
- 10037402-XXXX(X)LF SERIES ARE FOR LEAD-FREE OPTIONS.
- DATE CODE:XXXXXX SHOWS DAY/MONTH/YEAR.EX:122505 MEANS 12/25/2005.WILL BE PRINTED ON THE SURFACE OF CARTON.

|  |              |          |                         |           |            |              |
|--|--------------|----------|-------------------------|-----------|------------|--------------|
|  www.fciconnect.com |              |          | ✓                       | tolerance | projection | mm           |
| Dr   | WENDY CHEN   | 12/24/03 | Product family : DDR II |           | size       | Scale        |
| Eng  | RICHARD CHIU | 12/24/03 | Spec ref                |           | A4         | 0.500        |
| Chr  | PAUL WANG    | 12/24/03 | Material                |           | ECN        | T06-0006     |
| Appr   | JOSEPH HSIA  | 12/24/03 |                         |           |            |              |
| title  |              |          | DDR II 240P, FBD        |           |            |              |
| catalog no   |              |          | dwg no                  |           |            | Rev.         |
|  |              |          | 10037402                |           |            | N            |
|  |              |          | CUSTOMER DRAWING        |           |            | sheet 4 of 4 |

PDM: Rev:N

STATUS Released

Printed: Apr 15, 2006