

- NOTES:
- PUSHOUT FORCE SHALL BE 1 lb. MIN.
 - GOLD AREA TO APPEAR ON POST.
 - TAILS TO BE SHEARED TO DIMENSION SHOWN. (FOR HAND TOOLING ONLY)
 - TO BE VALID ALL PART NUMBERS MUST MEET THE FOLLOWING PARAMETERS: THE BOARD SPACE RANGE, POST HEIGHT MIN, AND BOARD + POST COMBINATION FOR EACH STYLE.
 - MAX BURR: .003 [08] ON CUT TAIL.
 - MAX CUT FLASH TO BE .010 [25] ON CRITICAL AREAS AS SHOWN.
 - DELETED.
 - DELETED.
 - AVAILABLE ONLY W/BOARD SPACE .215 [5.46] TO .610 [15.49].
 - PARTS TO BE ASSEMBLED WITH ALIGNMENT HOLES (IN BODY) FACING THE TAILS.
 - LOWER BODY MAY BE BLACK OR WHITE.
 - NOTE DELETED

DO NOT SCALE FROM PRINT

PATENT NUMBERS
 5713755 / 5961339

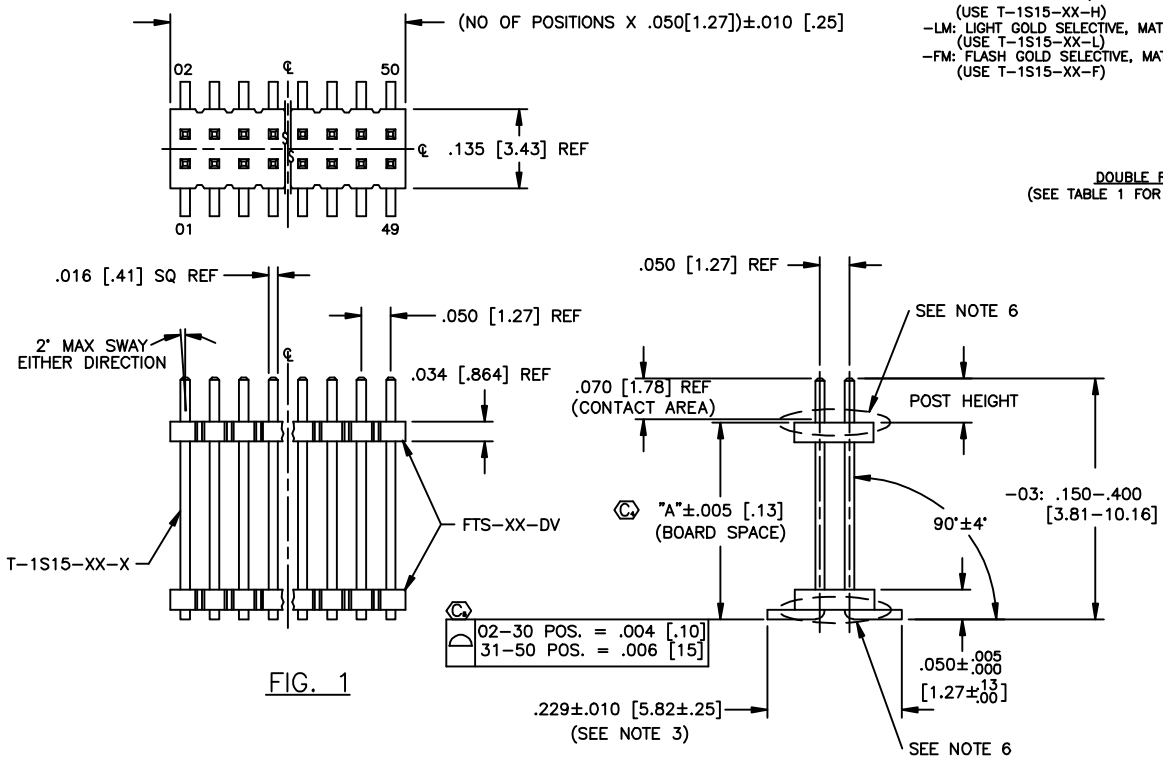


TABLE 1

LEAD STYLE	"A" RANGE	"C" RANGE (SEE SHEET 2, FIG 5 & 6)	"D" RANGE (SEE SHEET 2, FIG 5 & 6)	BODY STYLE		TERMINAL PIN	FIG.
				UPPER BODY	LOWER BODY		
-03	.085 - .214 [2.16 - 5.44]	N/A	N/A	FTS-XX-DV	FTS-XX-DV	T-1S15-04-X	1
-03	.215 - .335 [5.46 - 8.51]	.293 - .423 REF [7.45 - 10.75]	.413 - .543 REF [10.50 - 13.79]	FTSH-XX-D	*FTSH-XX-D	T-1S15-03-X	2 (SEE SHEET 2)
-05	.248 - .610 [6.30 - 15.49]	.326 - .698 REF [8.28 - 17.73]	.446 - .818 REF [11.32 - 20.78]	FTSH-XX-D	FTSH-XX-D	T-1S15-03-X	4 (SEE SHEET 2)

* FOR BKT MACHINE, USE FW-XX-D

FW-XX-XX-XX-D-XXX-XXX-XX

- POSITION SPEC
 No OF POS PER ROW
 -02 THRU -50
 "XX" = No OF POS x .050 [1.27]
- LEAD STYLE
 -03: USE T-1S15-XX-X
 -05: USE T-1S15-XX-X (SEE TABLE 1)
- PLATING
 -G: GOLD (OVER ENTIRE PIN) (USE T-1S15-XX-G)
 -F: FLASH SELECTIVE GOLD (USE T-1S15-XX-F)
 -L: LIGHT SELECTIVE GOLD (USE T-1S15-XX-L)
 -H: HEAVY GOLD POST, GOLD FLASH TAIL (USE T-1S15-XX-H)
 -LM: LIGHT GOLD SELECTIVE, MATTE TIN TAIL (USE T-1S15-XX-L)
 -FM: FLASH GOLD SELECTIVE, MATTE TIN TAIL (USE T-1S15-XX-F)

- OPTION
- P: PICK & PLACE PAD (USE PPP-25) (USE PPP-25-NT WITH -TR ONLY) (SEE FIG. 3, SHT 2)(5 POS. MIN)
 - TR: TAPE & REEL .6875 [17.46] MAX OVERALL HEIGHT AVAILABLE FOR -TR. MAX OVERALL HEIGHT = POST + BOARDSPACE + PAD + ALIGNMENT PIN = .6875 [17.46]
 - ES: END SHROUDS (SEE FIG. 5, SHT 2) (9 POS PER ROW MIN) (MAX POST: .075 [1.91]) (SEE NOTE 9)
 - EP: GUIDE POST (FIG. 6, SHT 3) (9 POS PER ROW MIN) (MAX POST: .075 [1.91]) (USE ONLY WHEN MATING WITH CLP) (SEE NOTE 9)
 - A: ALIGNMENT PIN (MOLDED OR STAKED, SAMTEC'S DISCRETION ON WHICH) (SEE FIG. 7 & 8, SHT 3) (STAKED: 6 POS. MIN)(MOLDED: 3 POS. MIN) (SEE NOTE 9)
- POST HEIGHT (SEE NOTE 4)
 .065 [1.65] MIN
 POST + BOARD SPACE =
 -03: .150-.400 [3.81-10.16]
 -05: .401-.675 [10.19-17.15]

DOUBLE ROW (SEE TABLE 1 FOR BODY STYLE)

BOARD SPACE OPTION (SEE NOTE 4)
 SEE TABLE 1
 -03 LEAD STYLE (.085 [2.16] MIN - .335 [8.51] MAX)
 -05 LEAD STYLE (.248 [6.30] MIN - .610 [15.49] MAX)
 MAX = "A" - POST (SEE TABLE 1)

TABLE 2

LEAD STYLE	OPTIONS	OVERALL HEIGHT	PACKAGING TUBE	PLUG
-03	-A-P	.150 - .650	PT-FW005-D-03-P	TP-03
-03	NONE, A	.150 - .225	PT-FW005-D-03-P	TP-03
-03	NONE, A	.226 - .309	PT-FW005-D-03-P	TP-03
-03	NONE, A	.310 - .400	PT-FW005-D-03-P	TP-03
-05	NONE, A	.310 - .800	PT-FW006-D-05-P	TP-03
-05	-A-P	.310 - .650	PT-FW006-D-05-P	TP-03
-05	-A-P	.651 - .800	PT-FW006-D-05-P	TP-03
-03, -05	-ES, -EP, -ES-A, -ES-A-P, -ES-P, -EP-A, -EP-P, -EP-A-P	ALL	PT-1-24-01-71	TP-03

PACKAGING NOTE:
 TUBE POSITIONS 5-50, LAYER PACKAGE ALL OTHERS

PROPRIETARY NOTE
 THIS DOCUMENT CONTAINS INFORMATION CONFIDENTIAL AND PROPRIETARY TO SAMTEC INC. AND SHALL NOT BE REPRODUCED OR TRANSMITTED TO OTHER DOCUMENTS OR DISCLOSED TO OTHERS OR USED FOR ANY PURPOSE OTHER THAN THAT FOR WHICH IT WAS OBTAINED WITHOUT THE EXPRESS WRITTEN CONSENT OF SAMTEC INC.

MATERIAL:
 FTS-50-DV & FTS-50-D
 VECTRA E130
 COLOR: BLACK
 FW-50-D
 ZENITE 6130L
 COLOR: NATURAL
 TERMINAL:
 PHOS BRONZE
 MAX FLASH ALLOWED:
 .002 [05]
 MAX GATE VESTIGE ALLOWED: .002 [05]

EXISPROD\ASSEMBLY\050 FWASM-SM

520 PARK EAST BLVD. NEW ALBANY, INDIANA 47150
 PHONE (812) 944-6733 P.O. BOX 1147
 CODE 55322

MADE BY:
 BRATCHER 11-3-94

FW-XX-XX-XX-D-XXX-XXX-XX
 SHEET 1 OF 3