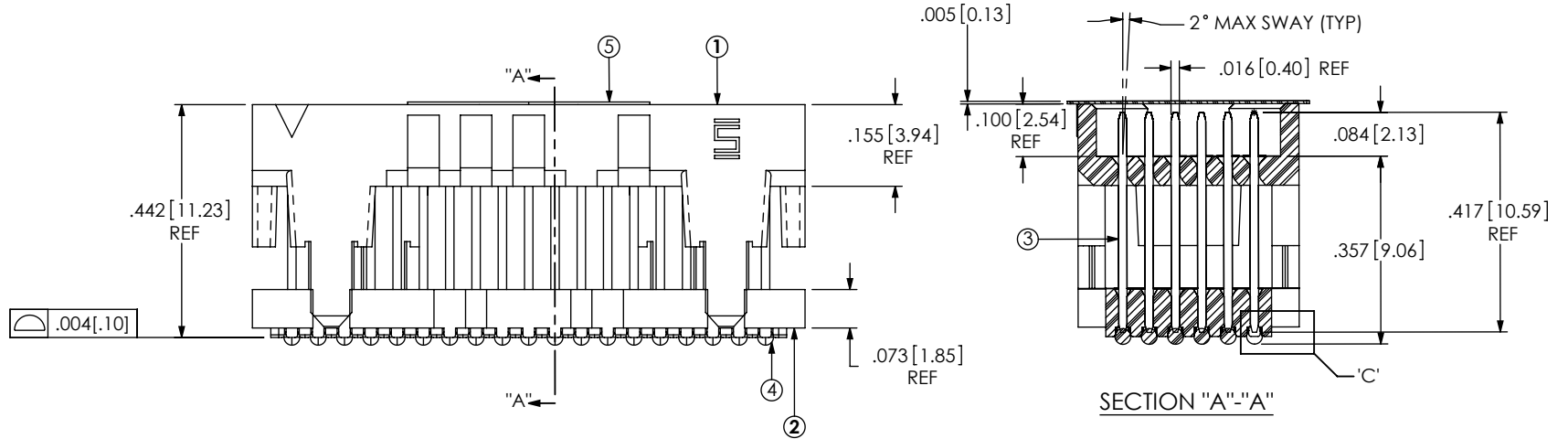
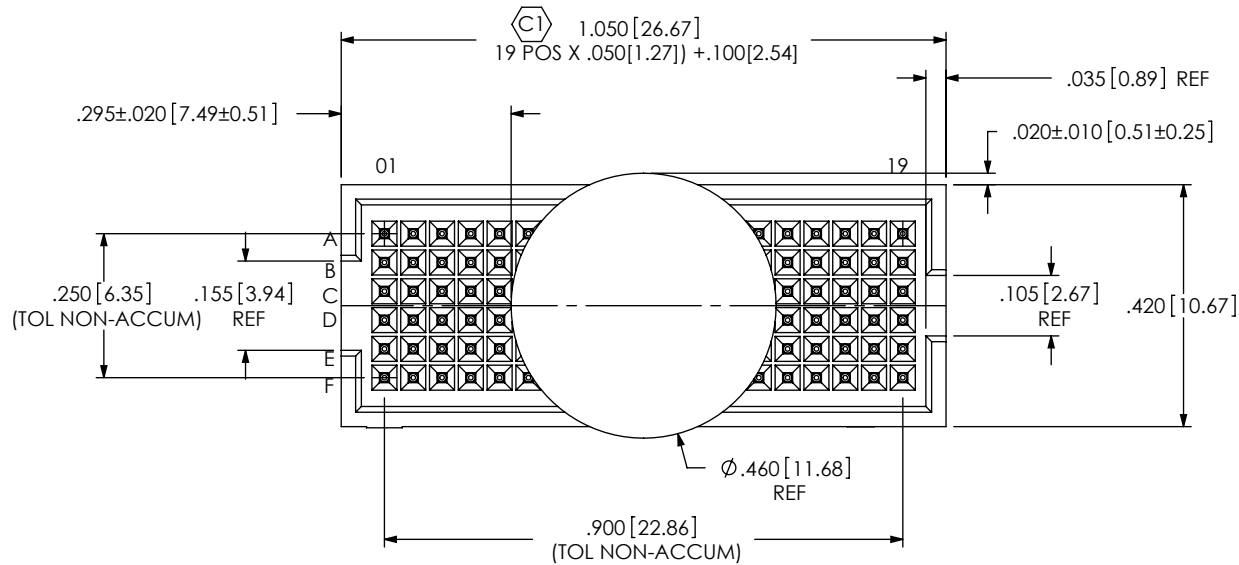
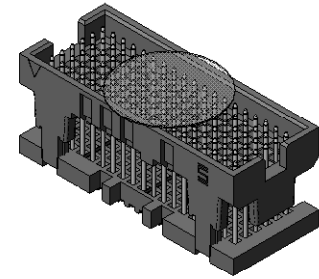


DO NOT SCALE FROM THIS PRINT

- NOTES:  
 1. 6 ROW, 19 POSITION NOT AVAILABLE AS STANDARD.  
 2. Ⓢ REPRESENTS A CRITICAL DIMENSION.  
 3. MAXIMUM BURR ALLOWANCE: .00015[.038]  
 4. MAXIMUM CUT FLASH: .010[.25]  
 5. MAXIMUM ALLOWABLE BOW: TOP/BOTTOM: .006[.15], SIDE/SIDE: .003[.08]  
 6. PARTS TO BE PACKAGED IN TAPE & REEL.



DATE: \_\_\_\_\_  
 DRAWN BY: \_\_\_\_\_  
 CHECKED BY: \_\_\_\_\_  
 COMPANY: \_\_\_\_\_  
 CUSTOMER: \_\_\_\_\_  
 PART NAME: \_\_\_\_\_  
 INCHES: \_\_\_\_\_  
 QUANTITY: \_\_\_\_\_  
 PACKAGE: \_\_\_\_\_  
 DRAWING NO.: \_\_\_\_\_  
 REVISION: \_\_\_\_\_

ITEM NO.	PART NUMBER	QUANTITY	MATERIAL
1	ASP-103598-03-B	1.0000	VECTRA E130i, COLOR: BLACK
2	ASP-103599-01-B	1.0000	VECTRA E130i, COLOR: BLACK
3	T-1R27-12B-H-1	114.00	BRASS ALLOY 260, 3/4 HARD
4	SDB-030-6337	114.00	63% Sn / 37% Pb
5	K-850-650	.89000	POLYIMIDE FILM
6	CT-ASP3112MS	.00571	ANTI-STATIC BLACK HIPS

UNLESS OTHERWISE SPECIFIED, DIMENSIONS ARE IN INCHES.  
 TOLERANCES ARE:  
 DECIMALS ANGLES  
 .XX: ±.01 2°  
 .XXX: ±.005  
 .XXXX: ±.0020

PROPRIETARY NOTE  
 THIS DOCUMENT CONTAINS INFORMATION CONFIDENTIAL AND PROPRIETARY TO SAMTEC, INC. AND SHALL NOT BE REPRODUCED OR TRANSFERRED TO OTHER DOCUMENTS OR DISCLOSED TO OTHERS OR USED FOR ANY PURPOSE OTHER THAN THAT WHICH IT WAS OBTAINED WITHOUT THE EXPRESSED WRITTEN CONSENT OF SAMTEC, INC.



520 PARK EAST BLVD, NEW ALBANY, IN 47150  
 PHONE: 812-944-6733 FAX: 812-948-5047  
 e-Mail: info@SAMTEC.com code 55322

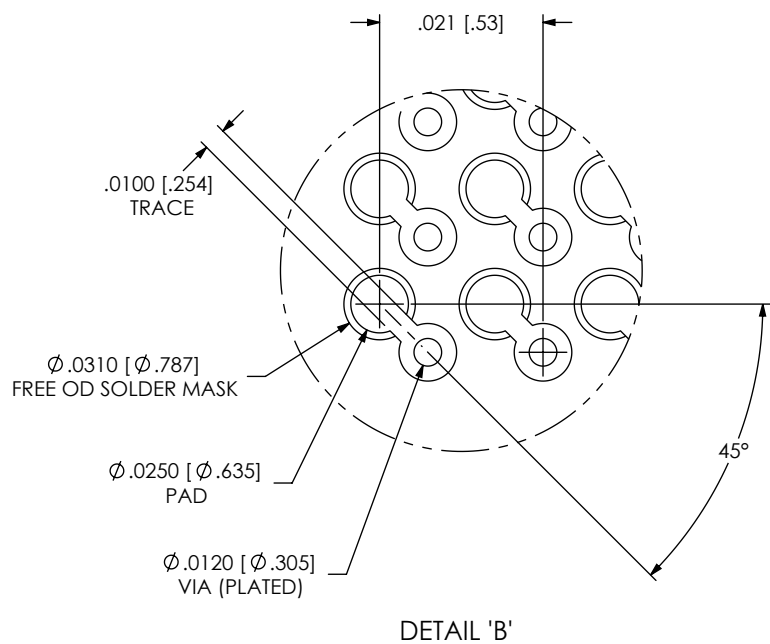
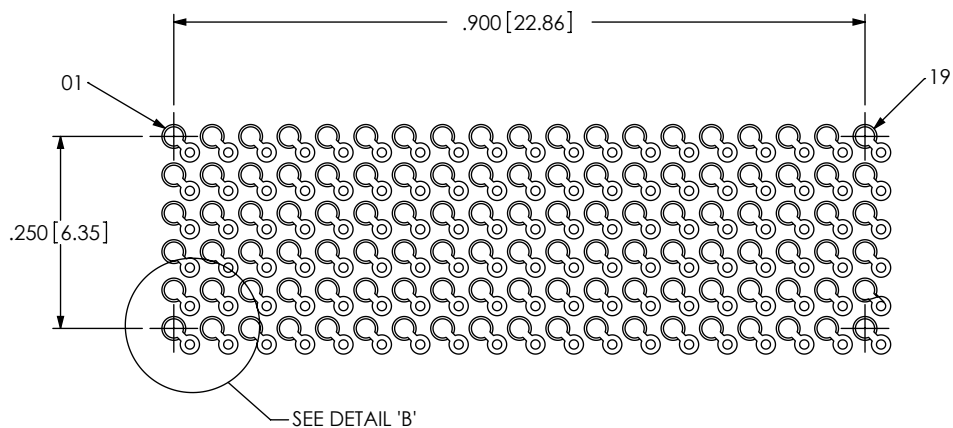
PLATING:  
 CONTACT AREA: .000030 GOLD OVER .000050 NICKEL  
 REMAINDER: .000003 GOLD OVER .000050 NICKEL

DO NOT SCALE DRAWING SHEET SCALE: 3:1

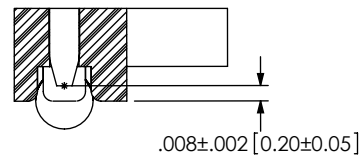
DESCRIPTION:  
 FLEX, Y, Z, .050 TERMINAL ASSEMBLY

DWG. NO. ASP-153860-02

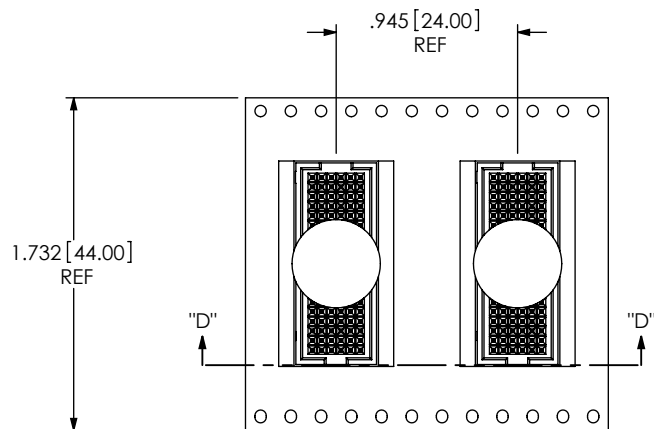
BY: J. BROWNING 04/18/2011 SHEET 1 OF 2



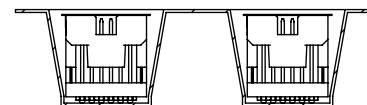
DETAIL 'B'



DETAIL 'C'  
SCALE 10:1



USER DIRECTION OF UN-REELING  
POCKET NOT DETAILED →



SECTION "D"- "D"  
SCALE 1:1

PACKAGING VIEW

PROPRIETARY NOTE

THIS DOCUMENT CONTAINS INFORMATION CONFIDENTIAL AND PROPRIETARY TO SAMTEC, INC. AND SHALL NOT BE REPRODUCED OR TRANSFERRED TO OTHER DOCUMENTS OR DISCLOSED TO OTHERS OR USED FOR ANY PURPOSE OTHER THAN THAT WHICH IT WAS OBTAINED WITHOUT THE EXPRESSED WRITTEN CONSENT OF SAMTEC, INC.



520 PARK EAST BLVD, NEW ALBANY, IN 47150  
PHONE: 812-944-6733 FAX: 812-948-5047  
e-Mail info@SAMTEC.com code 55322

SHEET SCALE: 3:1

DESCRIPTION: FLEX, Y, Z, .050 TERMINAL ASSEMBLY

DWG. NO. ASP-153860-02

BY: J. BROWNING 04/18/2011 SHEET 2 OF 2