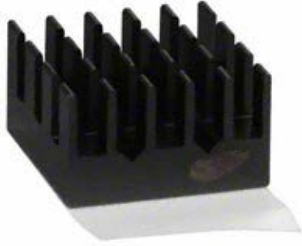


High Performance BGA Cooling Solutions w/ Thermal Tape Attachment



ATS Part#: **ATS-55170W-C1-R0**
 Description: High Performance X-CUT - Heat Sink, T412, BLACK-ANODIZED

Heat Sink Type: **Cross-Cut**
 Heat Sink Attachment: **THERMAL TAPE**
 Equivalent Part Number: **ATS-55170W-C2-R0**

**Image above is for illustration purpose only.*

Features & Benefits

- High efficiency cross-cut fin design provides low pressure drop characteristics
- Large surface area increases heat sink performance
- Designed specifically for BGAs and other surface mount packages
- Comes pre-assembled with high performance thermal interface material

Thermal Performance

AIR VELOCITY		@200 LFM 1.0 M/S	@300 LFM 1.5 M/S	@400 LFM 2.0 M/S	@500 LFM 2.5 M/S	@600 LFM 3.0 M/S	@700 LFM 3.5 M/S	@800 LFM 4.0 M/S
THERMAL RESISTANCE	Unducted Flow	8.60 °C/W	7.42 °C/W	6.55 °C/W	5.96 °C/W	5.52 °C/W	5.18 °C/W	4.91 °C/W
	Ducted Flow	n/a	n/a	n/a	n/a	n/a	n/a	n/a

Product Detail

Schematic Image	Dimension A	Dimension B	Dimension C	Dimension D	TIM	Finish
<p><i>*Image above is for illustration purpose only.</i></p>	17.0 mm	17.0 mm	24.5 mm	mm	T412	BLACK-ANODIZED
<p>Notes:</p> <ul style="list-style-type: none"> • Dimension A and B refer to component size. • Dimension C is the heat sink height from the bottom of the base to the top of the fin field. • ATS-55170W-C2-R0 is the exact heat sink assembly with an equivalent thermal interface material (Saint Gobain C675). • Thermal performance data are provided for reference only. Actual performance may vary by application. • ATS reserves the right to update or change its products without notice to improve the design or performance. • ATS certifies that this heat sink assembly is RoHS-6 and REACH compliant. • Contact ATS to learn about custom options available. 						

For more information, to find a distributor or to place an order, please contact us at 781-769-2800 (North America), sales@qats.com or www.qats.com.

© 2012 Advanced Thermal Solutions, Inc. | 89-27 Access Road | Norwood MA | 02062 | USA

