

FEATURES AND SPECIFICATIONS

Features and Benefits

- Sizes 2 to 20 circuits
- 0.64 mm (.025") square wire pins
- Stackable side-to-side and end-to-end

Reference Information

Packaging: Bulk
 UL File No.: E29179
 CSA File No.: LR19980
 Mates With: 5051 and 7534
 Designed In: Millimeters

Electrical

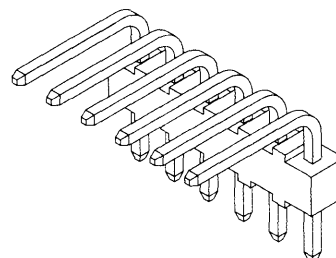
Voltage: 250V
 Current: 3.0A
 Contact Resistance: 20mΩ max.
 Dielectric Withstanding Voltage: 1000V AC
 Insulation Resistance: 1000 MΩ min.

Physical

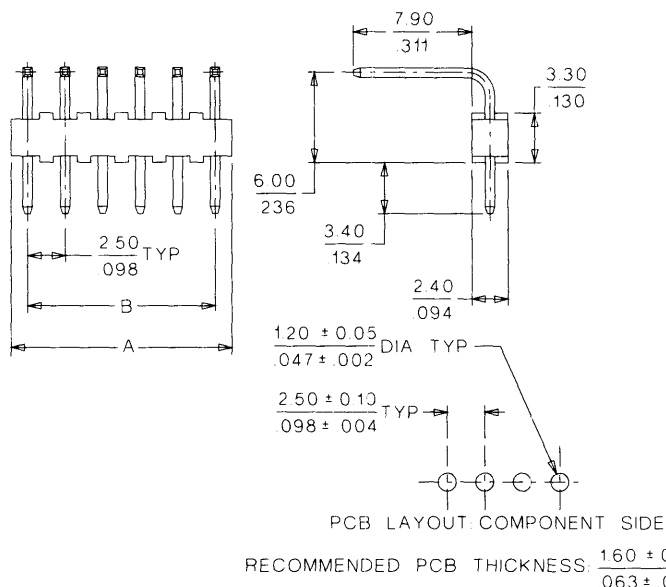
Housing: 6/6 nylon, UL 94V-0
 Contact: Brass
 Plating: Tin
 Operating Temperature: -40 to +105°C

molex® 2.50mm (.098") Pitch Header

3094-NA Right Angle Square Pin



CATALOG DRAWING (FOR REFERENCE ONLY)



ORDERING INFORMATION AND DIMENSIONS

Circuits	Order No.		Dimension	
	Tin	Gold	A	B
2	22-05-1021	22-12-1021	4.90 (.192)	2.50 (.098)
3	22-05-1031	22-12-1031	7.20 (.284)	5.00 (.196)
4	22-05-1041	22-12-1041	9.70 (.382)	7.50 (.295)
5	22-05-1051	22-12-1051	12.20 (.480)	10.00 (.393)
6	22-05-1061	22-12-1061	14.70 (.578)	12.50 (.492)
7	22-05-1071	22-12-1071	17.20 (.677)	15.00 (.590)
8	22-05-1081	22-12-1081	19.70 (.776)	17.50 (.688)
9	22-05-1091	22-12-1091	22.20 (.874)	20.00 (.787)
10	22-05-1101	22-12-1101	24.70 (.972)	22.50 (.885)
11	22-05-1111	22-12-1111	27.20 (1.071)	25.00 (.984)

Circuits	Order No.		Dimension	
	Tin	Gold	A	B
12	22-05-1121	22-12-1121	29.70 (1.169)	27.50 (1.082)
13	22-05-1131	22-12-1131	32.20 (1.268)	30.00 (1.181)
14	22-05-1141	22-12-1141	34.70 (1.367)	32.50 (1.279)
15	22-05-1151	22-12-1151	37.20 (1.462)	35.00 (1.377)
16	22-05-1161	22-12-1161	39.70 (1.563)	37.50 (1.476)
17	22-05-1171	22-12-1171	42.20 (1.662)	40.00 (1.574)
18	22-05-1181	22-12-1181	44.70 (1.760)	42.50 (1.673)
19	22-05-1191	22-12-1191	47.20 (1.858)	45.00 (1.771)
20	22-05-1201	22-12-1201	49.70 (1.957)	47.50 (1.870)

2.00 to 2.50mm (.079 to .098") Pitch

B