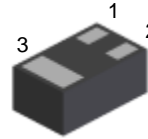
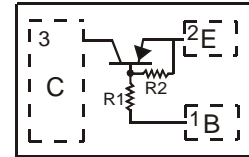


**Features**

- Epitaxial Planar Die Construction
- Ultra-Small Leadless Surface Mount Package
- Ideally Suited for Automated Assembly Processes
- **Lead Free By Design/RoHS Compliant (Note 1)**
- **"Green" Device (Note 2)**
- **Qualified to AEC-Q101 Standards for High Reliability**



Bottom View

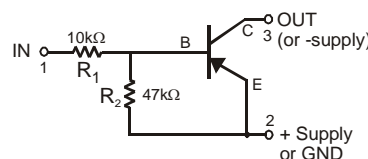


Top View

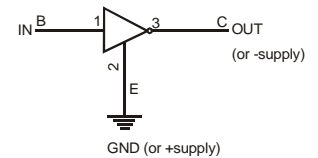
**Mechanical Data**

- Case: DFN1006-3
- Case Material: Molded Plastic, "Green" Molding Compound. UL Flammability Classification Rating 94V-0
- Moisture Sensitivity: Level 1 per J-STD-020D
- Terminal Connections: Collector Dot (See Diagram and Marking Information)
- Terminals: Finish — NiPdAu over Copper leadframe. Solderable per MIL-STD-202, Method 208
- Marking Information: See Page 3
- Ordering Information: See Page 3
- Weight: 0.0009 grams (approximate)

DFN1006-3



Schematic and Pin Configuration



Equivalent Inverter Circuit

**Maximum Ratings** @T<sub>A</sub> = 25°C unless otherwise specified

Characteristic	Symbol	Value	Unit
Supply Voltage	V <sub>CC</sub>	-50	V
Input Voltage	V <sub>IN</sub>	+6 to -40	V
Output Current	I <sub>O</sub>	-70	mA
Output (Collector) Current	I <sub>C(max)</sub>	-100	mA

**Thermal Characteristics**

Characteristic	Symbol	Value	Unit
Power Dissipation (Note 3) @T <sub>A</sub> = 25°C	P <sub>D</sub>	250	mW
Power Derating above 25°C	P <sub>der</sub>	2	mW/°C
Thermal Resistance, Junction to Ambient Air (Note 3) @T <sub>A</sub> = 25°C (Equivalent to one heated junction of PNP)	R <sub>θJA</sub>	500	°C/W
Operating and Storage Temperature Range	T <sub>j</sub> , T <sub>STG</sub>	-55 to +150	°C

**Electrical Characteristics: Discrete PNP Transistor (Q1)** @T<sub>A</sub> = 25°C unless otherwise specified

Characteristic	Symbol	Min	Typ	Max	Unit	Test Condition
<b>Off Characteristics (Note 4)</b>						
Collector-Base Breakdown Voltage	V <sub>(BR)CBO</sub>	-50	—	—	V	I <sub>C</sub> = -10μA, I <sub>E</sub> = 0
Collector-Emitter Breakdown Voltage	V <sub>(BR)CEO</sub>	-50	—	—	V	I <sub>C</sub> = -1.0mA, I <sub>B</sub> = 0
Collector-Base Cut Off Current	I <sub>CBO</sub>	—	—	-0.1	μA	V <sub>CB</sub> = -50V, I <sub>E</sub> = 0
Collector-Emitter Cut Off Current, I <sub>O(OFF)</sub>	I <sub>CEO</sub>	—	—	-0.5	μA	V <sub>CB</sub> = -50V, I <sub>B</sub> = 0
Emitter-Base Cut Off Current	I <sub>EBO</sub>	—	—	-0.2	mA	V <sub>EB</sub> = 4V, I <sub>C</sub> = 0
Input Off Voltage	V <sub>I(OFF)</sub>	—	—	-0.3	V	V <sub>CC</sub> = -5V, I <sub>O</sub> = -100uA
<b>On Characteristics (Note 4)</b>						
Input-On Voltage	V <sub>I(ON)</sub>	-1.4	—	—	V	V <sub>O</sub> = -0.3V, I <sub>O</sub> = I <sub>C</sub> = 1mA
Input Current	I <sub>I</sub>	—	—	-0.88	mA	V <sub>I</sub> = -5V
DC Current Gain	h <sub>FE</sub>	80	—	—	—	V <sub>CE</sub> = -5V, I <sub>C</sub> = -5mA
Collector-Emitter Saturation Voltage	V <sub>CE(SAT)</sub>	—	—	-0.25	V	I <sub>C</sub> = -50mA, I <sub>B</sub> = -2.5mA
Output On Voltage	V <sub>O(ON)</sub>	—	-0.1	-0.3	V	I <sub>I</sub> = -0.25mA, I <sub>O</sub> = -5mA
Input Resistance	R <sub>1</sub>	7	10	13	KΩ	—
Resistance Ratio	(R <sub>2</sub> /R <sub>1</sub> )	3.7	4.7	5.7	—	—
<b>Small Signal Characteristics</b>						
Current Gain-Bandwidth Product	f <sub>T</sub>	—	250	—	MHz	V <sub>CE</sub> = -10V, I <sub>E</sub> = -5mA, f = 100 MHz

- Notes:
1. No purposefully added lead.
  2. Diodes Inc.'s "Green" policy can be found on our website at [http://www.diodes.com/products/lead\\_free/index.php](http://www.diodes.com/products/lead_free/index.php).
  3. Device mounted on FR-4 PCB, 1" x 0.85" x 0.062"; pad layout as shown on page 3 or Diodes Inc. suggested pad layout document AP02001, which can be found on our website at <http://www.diodes.com/datasheets/ap02001.pdf>.
  4. Short duration pulse test used to minimize self-heating effect. Pulse width tp < 300μS, Duty Cycle, d ≤ 2%.

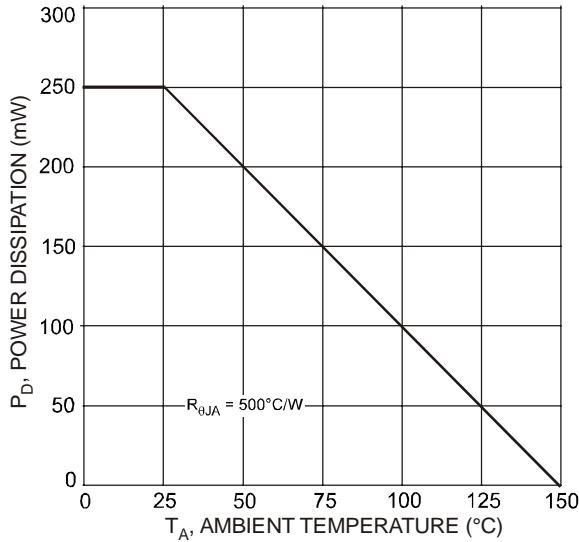


Fig. 1 Power Dissipation vs. Ambient Temperature (Note 3)

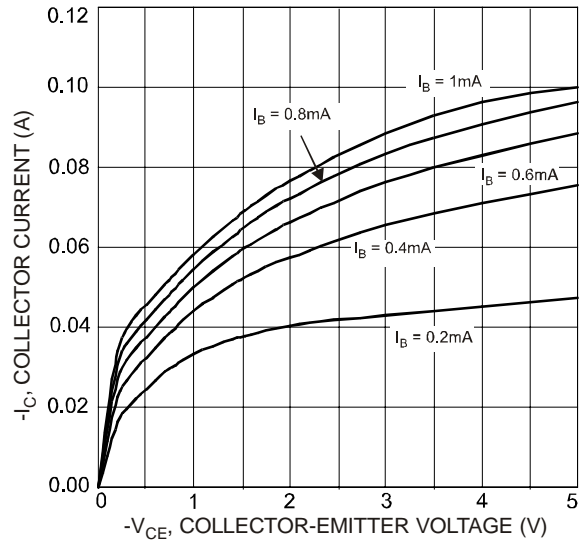


Fig. 2 Typical Collector Current vs. Collector-Emitter Voltage

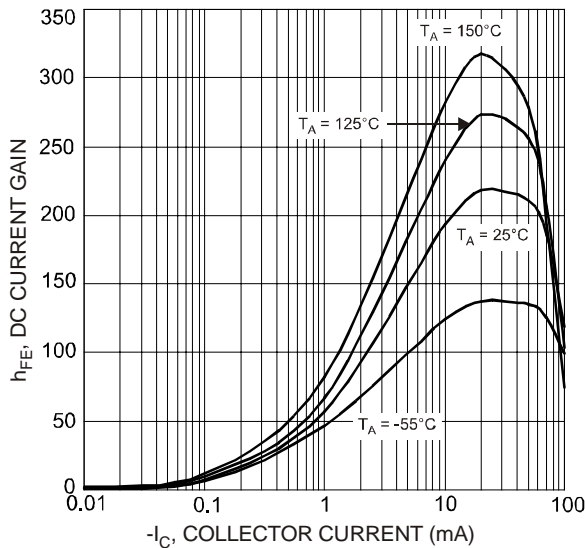


Fig. 3 Typical DC Current Gain vs. Collector Current

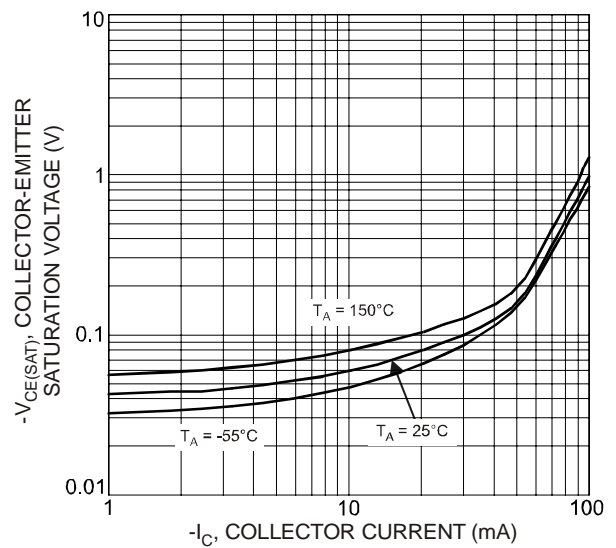


Fig. 4 Typical Collector-Emitter Saturation Voltage vs. Collector Current

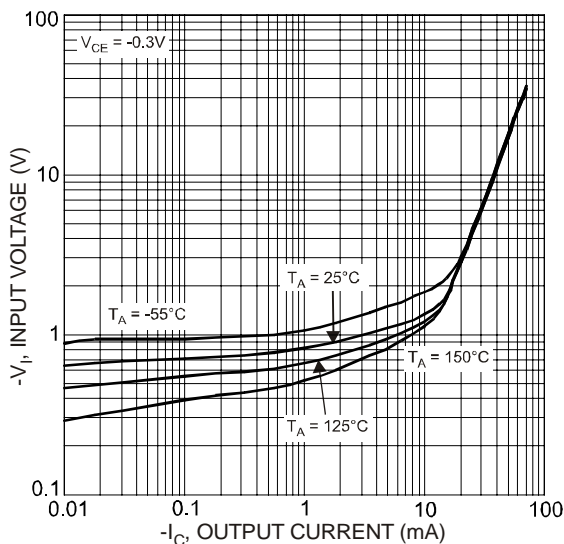


Fig. 5 Typical Input Voltage vs. Output Current (On Characteristics)

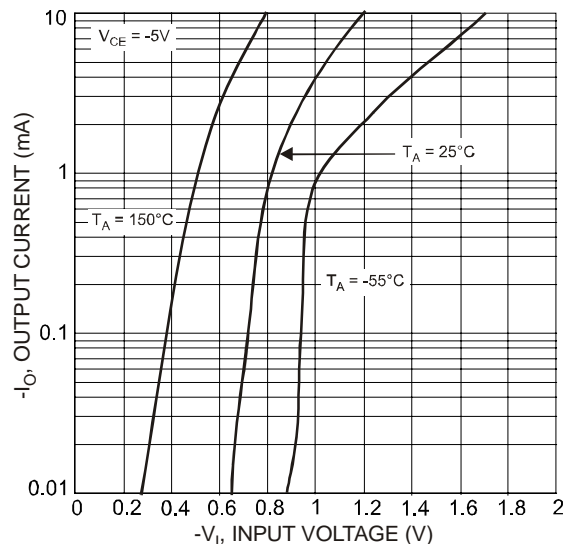


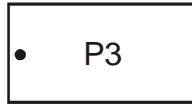
Fig. 6 Typical Output Current vs. Input Voltage (Off Characteristics)

## Ordering Information (Note 5)

Device	Packaging	Shipping
DDTA114YLP-7	DFN1006-3	3000/Tape & Reel

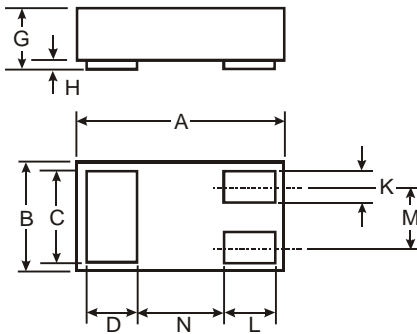
Notes: 5. For packaging details, please go to our website at <http://www.diodes.com/ap02007.pdf>.

## Marking Information



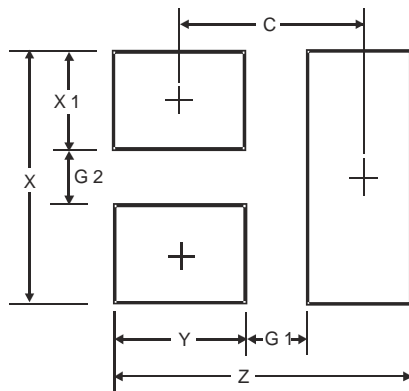
P3 = Product Type Marking Code  
Dot Denotes Collector, Pin 3

## Mechanical Details



DFN1006-3			
Dim	Min	Max	Typ
A	0.95	1.05	1.00
B	0.55	0.65	0.60
C	0.45	0.55	0.50
D	0.20	0.30	0.25
G	0.47	0.53	0.50
H	0	0.05	0.03
K	0.10	0.20	0.15
L	0.20	0.30	0.25
M	—	—	0.35
N	—	—	0.40
All Dimensions in mm			

## Suggested Pad Layout



Dimensions	Value
Z	1.1
G1	0.3
G2	0.2
X	0.7
X1	0.25
Y	0.4
C	0.7

### IMPORTANT NOTICE

Diodes Incorporated and its subsidiaries reserve the right to make modifications, enhancements, improvements, corrections or other changes without further notice to any product herein. Diodes Incorporated does not assume any liability arising out of the application or use of any product described herein; neither does it convey any license under its patent rights, nor the rights of others. The user of products in such applications shall assume all risks of such use and will agree to hold Diodes Incorporated and all the companies whose products are represented on our website, harmless against all damages.

### LIFE SUPPORT

Diodes Incorporated products are not authorized for use as critical components in life support devices or systems without the expressed written approval of the President of Diodes Incorporated.