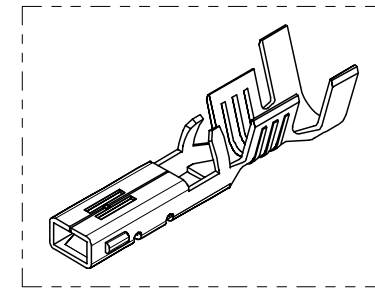
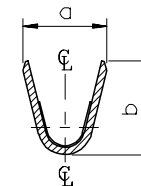
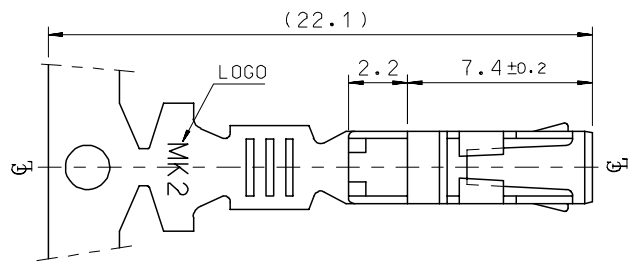
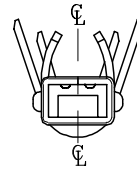
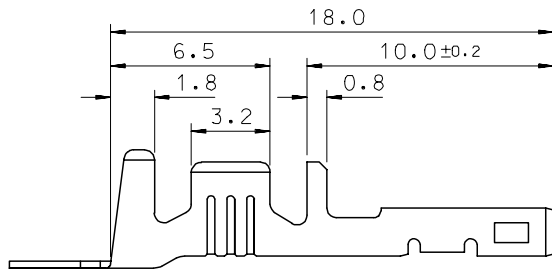


SEC' : B-B''

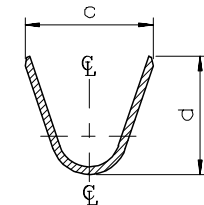
- NOTES
1. MATERIAL : PHOSPHOR BRONZE
0.3mm THICKNESS
 2. FINISH : PRE-PLATED TIN
 3. RECOMMENDED LENGTH OF WIRE STRIP IS 4.0-4.8mm.



ISOMETRIC VIEW



SEC' : C-C''



SEC' : D-D''

MATERIAL NO	ENG. No.	AWG	a	b	c	d	PITCH P
357460210	35746-0210	#18-#14	3.4	3.8	5.2	4.8	12.0
357460110	35746-0110	#22-#20	2.85	2.8	4.2	4.0	10.6
357460410	35746-0410	#24	2.2	1.75	3.85	3.5	10.6

REVISED	EC NO: KOR2008-0087
DRWN: JHPARK01	2007/11/15
CHKD: WYANG	2007/11/15
APPR: YUNSIKKIM	2007/11/15
REV	DESCRIPTION

QUALITY SYMBOLS	▽=0
	△=0

GENERAL TOLERANCES (UNLESS SPECIFIED)	mm	INCH
4 PLACES	± ---	± ---
3 PLACES	± ---	± ---
2 PLACES	± 0.3	± ---
1 PLACE	± 0.3	± ---
ANGULAR ± 1 °		
DRAFT WHERE APPLICABLE MUST REMAIN WITHIN DIMENSIONS		

DIMENSION STYLE		SCALE	DESIGN UNITS	THIRD ANGLE PROJECTION
MM ONLY		4:1	METRIC	
DRAWN BY	DATE	TITLE		
BK.CH01	1992/11/17	.070 FEMALE TERMINAL (A-TYPE)		
CHECKED BY	DATE			
BK.CH01	1992/11/17			
APPROVED BY	DATE			
CW.LEE	1992/11/17			
MATERIAL NO.	DOCUMENT NO.	SHEET NO.		
	SD-35746-001	1 OF 01		
SIZE	THIS DRAWING CONTAINS INFORMATION THAT IS PROPRIETARY TO MOLEX INCORPORATED AND SHOULD NOT BE USED WITHOUT WRITTEN PERMISSION			
A3				

DRAWN BY		DATE	TITLE
BK.CH01		1992/11/17	.070 FEMALE TERMINAL (A-TYPE)
CHECKED BY		DATE	
BK.CH01		1992/11/17	
APPROVED BY		DATE	
CW.LEE		1992/11/17	
MATERIAL NO.	DOCUMENT NO.	SHEET NO.	
	SD-35746-001	1 OF 01	
SIZE	THIS DRAWING CONTAINS INFORMATION THAT IS PROPRIETARY TO MOLEX INCORPORATED AND SHOULD NOT BE USED WITHOUT WRITTEN PERMISSION		
A3			