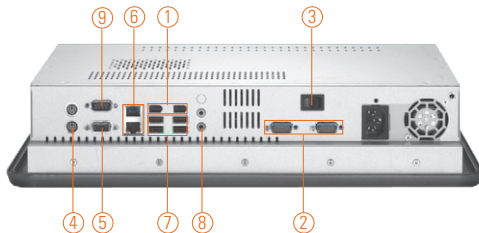
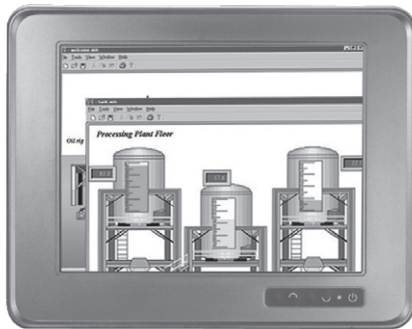


P1158-831

15" TFT Intel® Core™2 Duo Slim Industrial Panel Computer



- | | |
|---------------------|----------------------------|
| 1. IEEE 1394a | 6. Ethernet x 2 |
| 2. COM 2/3 (RS-232) | 7. USB 2.0 x 4 |
| 3. Power switch | 8. Audio (Mic-in/Line-out) |
| 4. PS/2 KB+MS x 2 | 9. COM 1 (RS-232/422/485) |
| 5. VGA | |



DualView

Introduction

The P1158-831 is a 15" multi-media panel PC for kiosk application. It has a fashionable mechanism design and industrial-grade material front bezel which can avoid damage from chemical corrosion. To meet the demand of multi-media application, the P1158-831 supports Intel® Core™2 Duo processor and operating system of Windows Vista, and is equipped with built-in speakers, two Gigabit LAN, IEEE 1394a and WLAN module for wireless network connection. This slim industrial panel PC is most suitable for kiosk, factory automation and more.

Powerful computing: Intel® Core™2 Duo processor

The P1158-831 features Intel® Core™2 Duo and Intel® 945GME chipset which deliver high computing capability. The Mobile CPU offers reliable and stable performance for rugged environment.

Industrial-grade material front bezel

The P1158-831 adopts industrial-grade material front bezel which incorporates the advantages of light weight, high degree of hardness, better heat releasing, easy-to-shape and anti-corrosion ability. Therefore, the PANEL1158-831 is especially suitable for most rugged industrial environments.

Speaker & WLAN antenna supported

P1158-831 features built-in speakers for kiosk application to display multimedia program. It also supports WLAN module (optional) & antenna for wireless network connectivity.

Features

- 15" XGA TFT LCD display
- Intel® Core™2 Duo processor
- Industrial-grade material front bezel: anti-corrosion
- Slim design: thickness 86.4 mm
- Built-in speakers & optional WLAN module
- Windows® Vista and 7 supported
- Supports panel mount, wall mount, rack mount, VESA arm, desktop stand
- Supports dimming control



▲ Side view

Specifications

Front Bezel	Industrial-grade material w/ IP65/NEMA 4 rugged protection		
LCD Panel	Display Type	15" XGA TFT	
	Brightness (cd/m ²)	250 nits	
	Resolution	1024 x 768 pixels	
	Viewing Angle (H/V)	140°/120°	
Main system	CPU	Socket M for Intel® Core™2 Duo/ Core™ Duo/ Core™ Solo processor with FSB 533/667 MHz	
	Chipset	Intel® 945GME + ICH7M/-DH	
	System Memory	2 x 240-pin DDR2 DIMM max. up to 4 GB	
	BIOS	Phoenix-Award 4Mbit with RPL/PXE LAN Boot ROM, SmartView and customer CMOS backup	
	Storage	1 x 3.5" or 2 x 2.5" IDE/SATA HDD	
	Watchdog Timer	255 levels, 1~255 sec.	

* All specifications and photos are subject to change without notice.

Specifications

I/O Connector	2 x RS-232 (COM 2/3) 1 x RS-232/422/485 (COM 1) 2 x IEEE 1394a 4 x USB 2.0 2 x PS/2 keyboard/mouse 2 x 10/100/1000Mbps Ethernet 1 x VGA 1 x Audio (Mic-in/Line-out)
Touchscreen	Resistive type Light Transmission 79% 1 million activations (typical) at a single point
Power supply	100 ~ 240VAC, 180W
Dimensions	420 mm (16.54") (W) x 86.4 mm (3.40") (D) x 335 mm (13.2") (H)
Packing Dimensions	610 mm (24.02") (W) x 260 mm (10.24") (D) x 590 mm (23.23") (H)
Weight (net/gross)	5.5 kg (12.1 lb)/9.3 kg (20.5 lb)
Environment	Operating temperature: 0° ~ +45°C (32°F ~ 113°F) Storage Temperature: -20°C ~ +65°C (-4°F ~ +149°F) Relative humidity: 10 ~ 95% @ 40°C, non-condensing Operation vibration: 1.0G, 5-500Hz, random
Certification	CE

Ordering Information

P1158-831	15" XGA TFT socket M Intel® Core™2 Duo slim industrial panel PC
-----------	---

* Specification and certifications are based on options and may vary.

Optional Accessories

E202003330	VM-101 (VESA ARM clamp type)
E202003329	VM-105 (VESA ARM wall-mount)
82211580080E	2 x 2.5 HDD kit
82211580090E	VESA/Wall mount kit
82211530110E	Wireless LAN kit
82261580070E	Rack mount kit

Optional EOS Installation

Windows® XP Embedded
Windows® CE.NET

Optional OS Installation

Windows® 2000/XP/Vista/7

Overview

Industrial Panel Computers & Monitors

Heavy-duty Fanless Touch Panel Computers

Digital Signage Solutions

Healthcare & Medical Solutions

Open Frame Panel Computers

Accessories

Dimensions

