

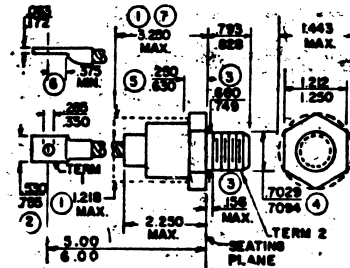
PARAMETERS

1N3174

SI RECTIFIER, 200A < I(O)/I(F) ≤ 500A

Description: Si Rectifier, 200A < I(O)/I(F) ≤ 500A

Mil/High-Rel? (Y/N).....	
I(out) (If AVG) Max.....	240
@Temp. (test) (°C).....	105#
VRRM.....	1.0k
1-Cycle Surge Current (A).....	3.0k
Vf Max.....	1.9
@If (test).....	240
@Temp. (test) for Vf).....	105#
Ir @25°C.....	
@Volts (test) (V).....	1.0k
Ir @ Diff. Temp (A).....	16m
@Temp (test) (°C).....	105#
Oper. Temp (°C) Max.....	175#
Pkg Style.....	D0-9
Surface Mounted (Y/N).....	N



DO9 NOTES:

1. The device with exception of the hexagon, thread, and flexible lead extension lies within the cylinder defined by 1.218 and length 3.25.
2. Angular orientation of terminal with respect to hexagonal portion is undefined. Square or radius on end of terminal is optional.
3. Length of incomplete or undercut threads.
4. Pitch diameter of 3/4-16 UNF-2A (coated) threads (ASA B1.1-1960).
5. A chamfer (or undercut) on one or both ends of the hexagonal portion is optional.
6. Minimum flat.
7. Seated height with lead bent at right angle.

