

**PLEASE CHECK WWW.MOLEX.COM FOR LATEST PART INFORMATION**

**Part Number:** [0743209024](#)  
**Status:** **Active**  
**Description:** MicroCross™ DVI-I Digital Interface, PCB Receptacle, Panel Mount, Through Hole, Right Angle, ATX with Beveled Metal Pins, Gold (Au) Flash, with 4.75mm (.187") Jack Posts, 24 Circuits, Leadfree

**Documents:**

[Drawing \(PDF\)](#) [RoHS Certificate of Compliance \(PDF\)](#)  
[Product Specification PS-74320-001 \(PDF\)](#)

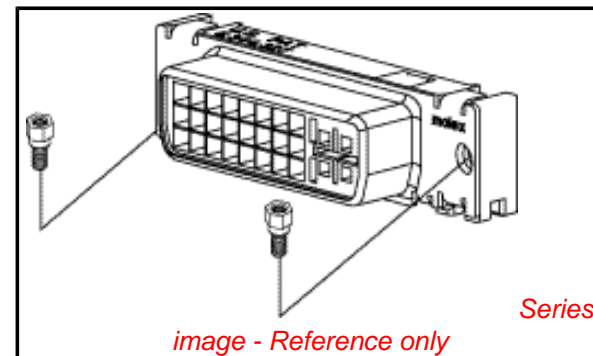


image - Reference only

**Agency Certification**

UL E29179

**General**

Product Family I/O Connectors  
 Series [74320](#)  
 Application Wire-to-Board  
 Comments DDWG (Digital Display Working Group) Standard  
 Component Type Receptacle  
 Product Name MicroCross™DVI  
 Type N/A

**Physical**

Boot Color N/A  
 Circuits (Loaded) 24  
 Circuits (maximum) 24  
 Color - Resin Natural  
 Durability (mating cycles max) 100  
 Flammability 94V-0  
 Gender Receptacle  
 Keying to Mating Part Yes  
 Lock to Mating Part Yes  
 Material - Metal Copper Alloy  
 Material - Plating Mating Gold  
 Material - Plating Termination Tin  
 Number of Rows 3  
 Orientation Right Angle  
 PC Tail Length (in) 0.092 In  
 PC Tail Length (mm) 2.34 mm  
 PCB Locator Yes  
 PCB Retention Yes  
 Packaging Type Tray  
 Panel Mount Yes  
 Pitch - Mating Interface (in) 0.075 In  
 Pitch - Mating Interface (mm) 1.91 mm  
 Pitch - Term. Interface (in) 0.075 In  
 Pitch - Term. Interface (mm) 1.91 mm  
 Plating min: Mating (µin) 2  
 Plating min: Mating (µm) 0.05  
 Plating min: Termination (µin) 100  
 Plating min: Termination (µm) 2.50  
 Polarized to Mating Part Yes  
 Polarized to PCB Yes  
 Ports 1  
 Surface Mount Compatible (SMC) No  
 Temperature Range - Operating -20°C to +85°C

**EU RoHS**

**ELV and RoHS  
 Compliant**  
**REACH SVHC**  
 Not Reviewed  
**Halogen-Free  
 Status**  
**Not Reviewed**

**China RoHS**



**Need more information on product  
 environmental compliance?**

Email [productcompliance@molex.com](mailto:productcompliance@molex.com)  
 For a multiple part number RoHS Certificate of Compliance, [click here](#)

Please visit the [Contact Us](#) section for any non-product compliance questions.

**Search Parts in this Series**

[74320Series](#)

**Mates With**

[88744](#) , [74323](#)

|                              |              |
|------------------------------|--------------|
| Termination Interface: Style | Through Hole |
| Waterproof / Dustproof       | No           |
| Wire Size AWG                | N/A          |

**Electrical**

|                               |              |
|-------------------------------|--------------|
| Current - Maximum per Contact | 3A           |
| Grounding to Panel            | Yes          |
| Shield Type                   | Full Shield  |
| Shielded                      | Yes          |
| Voltage - Maximum             | 40V AC (RMS) |

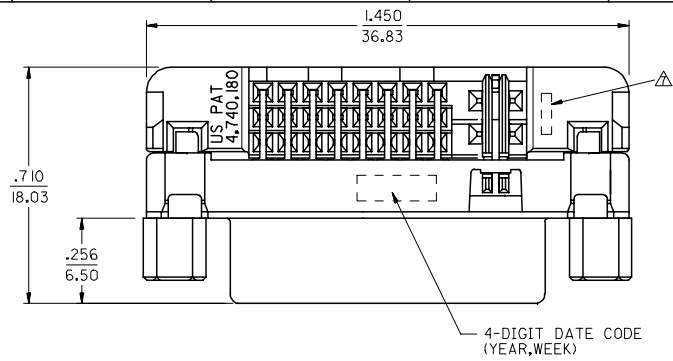
**Material Info****Reference - Drawing Numbers**

|                       |              |
|-----------------------|--------------|
| Product Specification | PS-74320-001 |
| Sales Drawing         | SD-74320-027 |

This document was generated on 04/05/2010

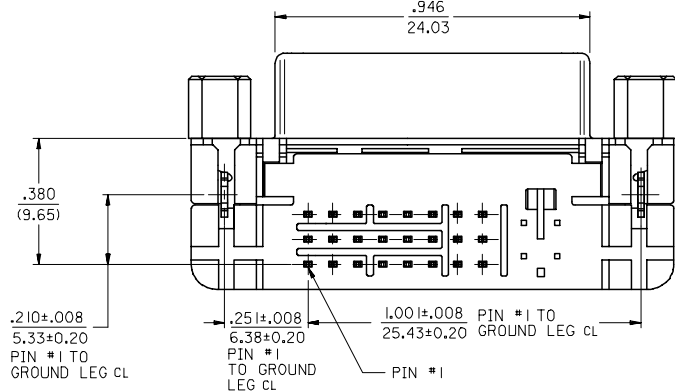
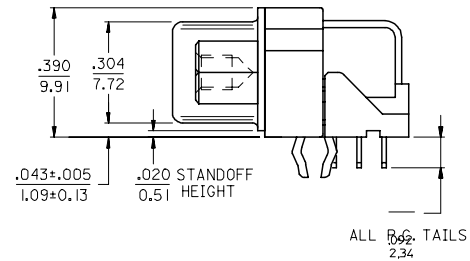
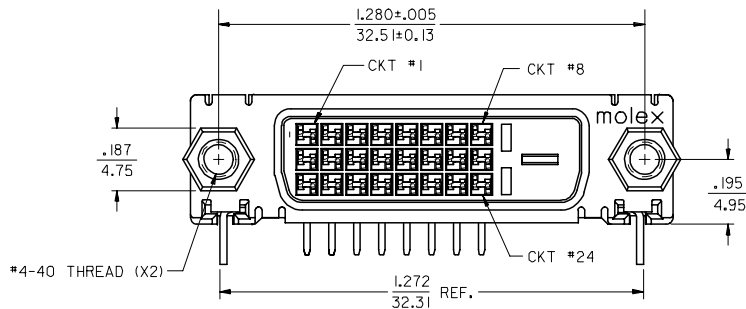
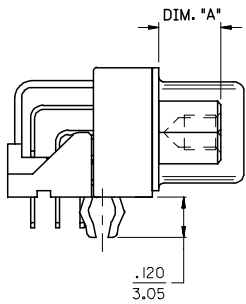
**PLEASE CHECK [WWW.MOLEX.COM](http://WWW.MOLEX.COM) FOR LATEST PART INFORMATION**

| PART NUMBER | DIM "A"      | PLATING OPTION |
|-------------|--------------|----------------|
| 74320-9020  | .187<br>4.75 | 1 (30µ Au)     |
| 74320-9024  | .236<br>6.00 | 2 (Au FLASH)   |
| 74320-9224  | .236<br>6.00 |                |



NOTES:

- MATERIALS:  
SHIELD -- DEEP DRAW STEEL.  
HOUSING -- GLASS FILLED POLYMER, WHITE/NATURAL, UL 94v-0.  
TAIL ALIGNER -- GLASS FILLED POLYMER, WHITE/NATURAL, UL 94v-0.  
CONTACTS -- COPPER ALLOY.  
MICROCROSS GROUND -- COPPER ALLOY.  
JACKPOSTS -- STEEL, ZINC PLATE W/CLEAR CHROMATE.
  - PLATING: SEE SHEET 2
  - PRODUCT CONFORMS TO MOLEX PRODUCT SPECIFICATION PS-74320-001.
  - SEE SHEET 2 FOR RECOMMENDED P.C.B. LAYOUT.
  - PARTS WILL BE PACKAGED IN TRAYS.
  - PRODUCT CONFORMS TO DDWG DVI SPECIFICATION, REFER TO THIS SPECIFICATION FOR CONNECTOR INTERFACE DIMENSIONS.
- △ CAVITY NO. AND MANUFACTURING PLANT CODE.



| ADD NEW P/N        | DESCRIPTION | REV |
|--------------------|-------------|-----|
| EC NO: SH2007-0558 | 2007/03/21  |     |
| DRWN: XJSONG       | 2007/03/21  |     |
| CHKD: JTIAN        | 2007/03/21  |     |
| APPR: INCHEH       | 2007/03/27  |     |

| QUALITY SYMBOLS |
|-----------------|
| ▽=0             |
| △=0             |

| GENERAL TOLERANCES (UNLESS SPECIFIED) |        |
|---------------------------------------|--------|
| mm                                    | INCH   |
| 4 PLACES ± ---                        | ± ---  |
| 3 PLACES ± ---                        | ± .010 |
| 2 PLACES ± 0.25                       | ± .010 |
| 1 PLACE ± 0.25                        | ± .010 |
| ANGULAR ± ---°                        |        |

DRAFT WHERE APPLICABLE MUST REMAIN WITHIN DIMENSIONS

| DIMENSION STYLE |          |
|-----------------|----------|
| IN/MM           |          |
| DRAWN BY        | DATE     |
| TMCCLELL        | 99/12/07 |
| CHECKED BY      | DATE     |
| SCHMIDGA        | 99/12/07 |
| APPROVED BY     | DATE     |
| NELSON          | 99/12/07 |
| MATERIAL NO.    |          |
| SEE TABLE       |          |
| SIZE            |          |
| A3              |          |

| SCALE  | DESIGN UNITS | THIRD ANGLE PROJECTION |
|--|--------------|------------------------|
| 4:1  | INCH         | ☉ □                    |
| TITLE  |              |                        |
| DVI-D/ATX RIGHT ANGLE RECEPTACLE CONNECTOR W/JACKPOSTS |              |                        |
| MOLEX INCORPORATED                                     |              |                        |
| DOCUMENT NO.   |              | SHEET NO.              |
| SD-74320-027   |              | 1 OF 2                 |

10 9 8 7 6 5 4 3 2 1

F

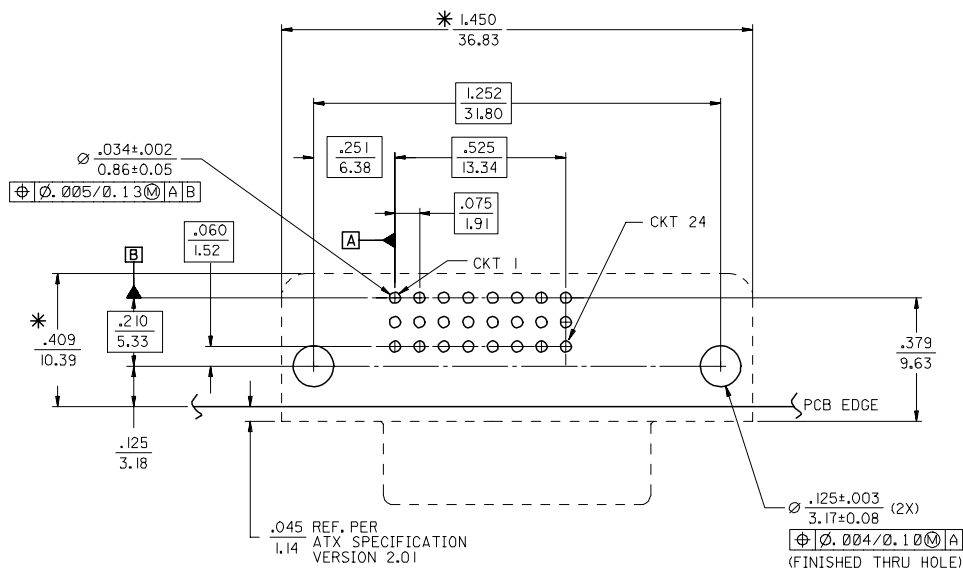
E

D

C

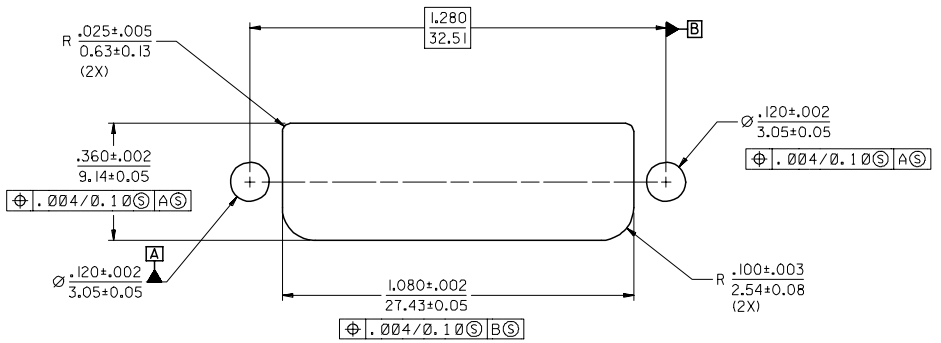
B

A



**RECOMMENDED PCB LAYOUT**  
COMPONENT SIDE OF PCB SHOWN

\* THESE DIMENSIONS REPRESENT CONNECTOR OVERLAY ON PCB.



**RECOMMENDED PANEL CUT-OUT**  
PANEL THICKNESS: .030" - .040"

**PLATING OPTIONS:**

**PLATING OPTION #1:**

OUTER SHIELD -- 150u"/(3.75um) MIN. BRIGHT TIN OVER 50u"/(1.27um) MIN. NICKEL OVER COPPER FLASH  
.075"/(1.91mm) CONTACTS -- 30u"/(0.75um) MIN. SELECT GOLD AND 100u"/(2.50um) MIN. SELECT PURE TIN OVER 50u"/(1.27um) MIN. NICKEL OVERALL.

**PLATING OPTION #2:**

OUTER SHIELD -- 150u"/(3.75um) MIN. BRIGHT TIN OVER 50u"/(1.27um) MIN. NICKEL OVER COPPER FLASH  
.075"/(1.91mm) CONTACTS -- SELECT GOLD AND 100u"/(2.50um) MIN. SELECT PURE TIN OVER 50u"/(1.27um) MIN. NICKEL OVERALL.

|                    |             |
|--------------------|-------------|
| SEE SHEET1         | DESCRIPTION |
| EC NO: SH2007-0558 | 2007/03/21  |
| DRWN: JSONG        | 2007/03/21  |
| CHKD: JTIAN        | 2007/03/21  |
| APPR: INCHEH       | 2007/03/27  |
| REV                |             |

|                 |     |
|-----------------|-----|
| QUALITY SYMBOLS | ▽=0 |
|                 | ▽=0 |

|  |                 |       |
|--|-----------------|-------|
| GENERAL TOLERANCES (UNLESS SPECIFIED)                | DIMENSION STYLE |       |
|  | IN/MM           |       |
|  | mm              | INCH  |
| 4 PLACES   | ±---            | ±---  |
| 3 PLACES   | ±---            | ±.010 |
| 2 PLACES   | ±0.25           | ±.010 |
| 1 PLACE  | ±0.25           | ±.010 |
|  | ANGULAR ±---°   |       |
| DRAFT WHERE APPLICABLE MUST REMAIN WITHIN DIMENSIONS | SEE SHEET1      |       |

|              |              |  |
|--------------|--------------|--|
| DRAWN BY     | DATE         | TITLE  |
| TMCCLELL     | 99/12/07     | DVI-D/ATX RIGHT ANGLE RECEPTACLE CONNECTOR W/JACKPOSTS |
| CHECKED BY   | DATE         |  |
| SCHMIDGA     | 99/12/07     | MOLEX INCORPORATED                                     |
| APPROVED BY  | DATE         |  |
| NELSON       | 99/12/07     |  |
| MATERIAL NO. | DOCUMENT NO. | SHEET NO.  |
| SEE SHEET1   | SD-74320-027 | 2 OF 2   |

|       |              |                        |
|-------|--------------|------------------------|
| SCALE | DESIGN UNITS | THIRD ANGLE PROJECTION |
| 4:1   | INCH         |                        |

9 8 7 6 5 4 3 2 1