

NOTES:

1. MATERIAL:

HSG: PCT, 30% GLASS FILLED,UL 94V-0, COLOUR BLACK.

PIN: 0.50MM SQ PHOSPHOR BRONZE 510

2. PLATING:

***6 - 0.38um MIN GOLD IN CONTACT AREA, 1.90um MIN TIN IN SOLDERTAIL AREA, BOTH OVER 1.27um MIN NICKEL OVERALL

***7 - 0.76um MIN GOLD IN CONTACT AREA, 1.90um MIN TIN IN SOLDERTAIL AREA, BOTH OVER 1.27um MIN NICKEL OVERALL

***8 - 2.54um MIN TIN OVER 1.27um MIN NICKEL OVERALL

3. 12 CKT USED FOR ILLUSTRATION ONLY

4. PART TO BE PACKED IN POCKET TRAY/TUBE (SEE TABLE).

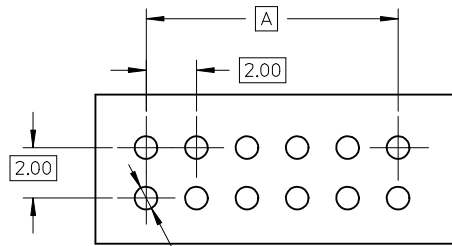
5. PRODUCT SPEC PS-87761-100 APPLIES.

6. RECOMMENDED PCB BOARD THK 1.60±0.10 MM.

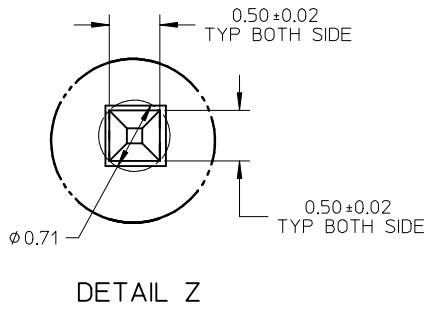
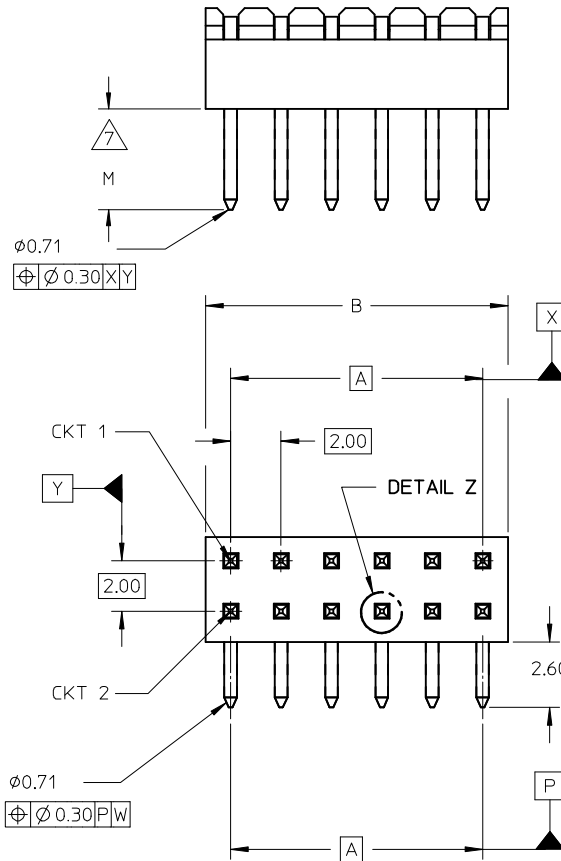
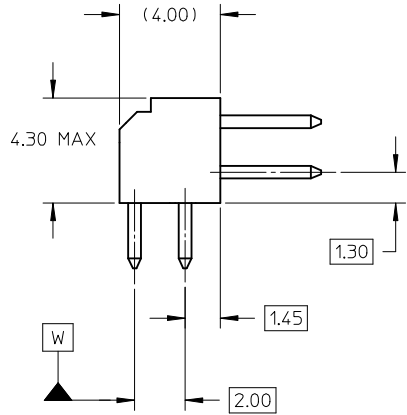
7. MATING LENGTH: 1 - 4.00MM
2 - 3.50MM
3 - 3.06MM
4 - 5.75MM

LEGEND:

87760 - * * * *
(SEE SHT 3) ——— PLATING OPTION 2 (SEE NOTE 2)
————— MATING OPTION 7



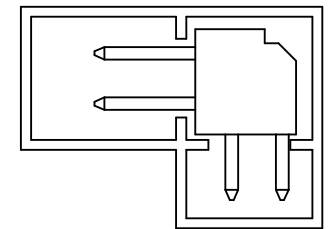
RECOMMENDED PCB LAYOUT



DETAIL Z

0047-DW-SIRIUS EC NO: S2010-0177 DRWN:SKANG CHKD:ATSEE APPR:MLONG 2009/10/21 2009/10/22 2009/10/23	QUALITY SYMBOLS ▽=0 ◻=0	GENERAL TOLERANCES (UNLESS SPECIFIED)		DIMENSION STYLE MM ONLY		SCALE NTS	DESIGN UNITS METRIC	THIRD ANGLE PROJECTION	
		mm	INCH	DRAWN BY	DATE	TITLE			
		± ---	± ---	KSEE	2003/10/15	MGRID, 2MM DUAL ROW HDR. R/A			
		± ---	± ---	CHECKED BY	DATE				
		± 0.2	± ---	KCLING	2003/12/02				
		± ---	± ---	APPROVED BY	DATE				
		ANGULAR ± 3 °		SKTOH	2003/12/11	MOLEX INCORPORATED DOCUMENT NO. SD-87760-109			
		DRAFT WHERE APPLICABLE MUST REMAIN WITHIN DIMENSIONS		MATERIAL NO. SEE TABLE		SHEET NO. 1 OF 2			
				THIS DRAWING CONTAINS INFORMATION THAT IS PROPRIETARY TO MOLEX INCORPORATED AND SHOULD NOT BE USED WITHOUT WRITTEN PERMISSION					

	10	9	8	7	6	5	4	3	2	1																			
	PART NUMBER	VOID PIN LOCATION	CKT SIZE	A	B	M	PACKAGING TYPE																						
F	87760-04**	-	04	2.00	4.00	REFER TO NOTE 7.	TRAY																						
	87760-06**	-	06	4.00	6.00																								
	87760-08**	-	08	6.00	8.00																								
	87760-10**	-	10	8.00	10.00																								
	87760-12**	-	12	10.00	12.00																								
E	87760-14**	-	14	12.00	14.00							REFER TO NOTE 7.	TRAY																
	87760-16**	-	16	14.00	16.00																								
	87760-18**	-	18	16.00	18.00																								
	87760-20**	-	20	18.00	20.00																								
	87760-22**	-	22	20.00	22.00																								
D	87760-24**	-	24	22.00	24.00													REFER TO NOTE 7.	TRAY										
	87760-26**	-	26	24.00	26.00																								
	87760-28**	-	28	26.00	28.00																								
	87760-30**	-	30	28.00	30.00																								
	87760-32**	-	32	30.00	32.00																								
C	87760-34**	-	34	32.00	34.00																			REFER TO NOTE 7.	TRAY				
	87760-36**	-	36	34.00	36.00																								
	87760-38**	-	38	36.00	38.00																								
	87760-40**	-	40	38.00	40.00																								
	87760-42**	-	42	40.00	42.00																								
B	87760-44**	-	44	42.00	44.00	REFER TO NOTE 7.	TRAY																						
	87760-46**	-	46	44.00	46.00																								
	87760-48**	-	48	46.00	48.00																								
	87760-50**	-	50	48.00	50.00																								
	87760-5116	5, 6 & 26	50	48.00	50.00																								
	87760-5248	-	28	26.00	28.00							TUBE																	



PART IN TUBE

A	0047-DW-SIRIUS EC NO: S2010-0177 DRWN:SKANG 2009/10/21 CHKD:ATSEE 2009/10/22 APPR:MLONG 2009/10/23	DESCRIPTION REV	QUALITY SYMBOLS	GENERAL TOLERANCES (UNLESS SPECIFIED)	DIMENSION STYLE		SCALE	DESIGN UNITS	THIRD ANGLE PROJECTION				
			▽=0 ◻=0		MM ONLY	NTS	METRIC						
					mm	INCH	DRAWN BY		DATE	TITLE			
					4 PLACES ± ---	± ---	KSEE	2003/10/15	MGRID, 2MM DUAL ROW HDR. R/A				
					3 PLACES ± ---	± ---	CHECKED BY	DATE					
	2 PLACES ± 0.2	± ---	KCLING	2003/12/02									
	1 PLACE ± ---	± ---	APPROVED BY	DATE									
	ANGULAR ± 3 °		SKTOH	2003/12/11	MOLEX INCORPORATED								
	DRAFT WHERE APPLICABLE MUST REMAIN WITHIN DIMENSIONS		MATERIAL NO.	SEE TABLE		DOCUMENT NO.	SD-87760-109						
	A11	SIZE	THIS DRAWING CONTAINS INFORMATION THAT IS PROPRIETARY TO MOLEX INCORPORATED AND SHOULD NOT BE USED WITHOUT WRITTEN PERMISSION										
		A3	2 OF 2										