

Transient Voltage Suppressors for ESD Protection

 **Lead(Pb)-Free**

FEATURES:

- * Bidirectional
- * Low leakage current
- * High temperature soldering guaranteed :
260°C/10 seconds at terminals
- * Protects one power or I/O port

MECHANICAL DATA:

- * Case: JEDEC SOD-923 molded plastic
- * Polarity: See connection diagram
- * Mounting Position: Any
- * Marking Code: 9C

**TRANSIENT VOLTAGE
SUPPRESSORS**
**10 WATTS
6.8 VOLTS**

SOD-923

MAXIMUM RATINGS (At TA = 25°C unless otherwise noted)

RATINGS	Symbol	Value	Unit
Peak Pulse Power @ tp = 8X20μ Sec	PPK	10	W
Power Dissipation	P _D	100	mW
Operating Temperature Range	T _J	-55 to +150	°C
Storage Temperature Range	T _{STG}	-55 to +150	°C

ELECTRICAL CHARACTERISTICS (At TA = 25°C unless otherwise noted)

Parameter	Symbol	Min	Typ	Max	Unit
Breakdown Voltage @ I _T =1.0mA	V _{BR}	5.780	-	7.820	V
Maximum Reverse Leakage V _R =3.5V	I _R	-	-	0.5	μA
Typical Junction Capacitance V _R =0V, F=1MHz	C _T	-	15	-	pF

Typical Characteristics ($T_A = 25^\circ\text{C}$ unless otherwise noted)

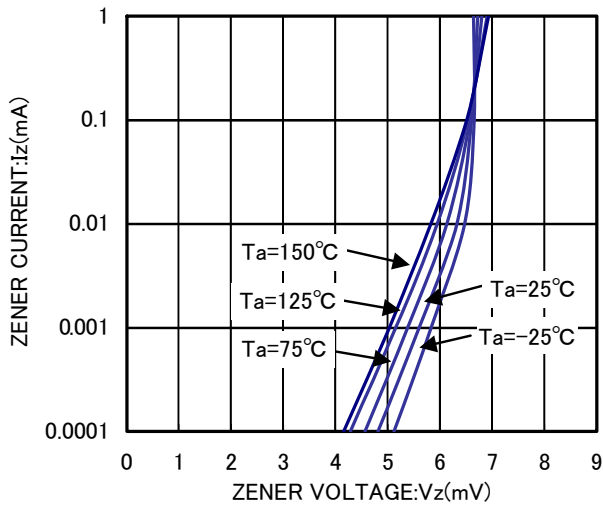


Fig-2 V_z - I_z CHARACTERISTICS

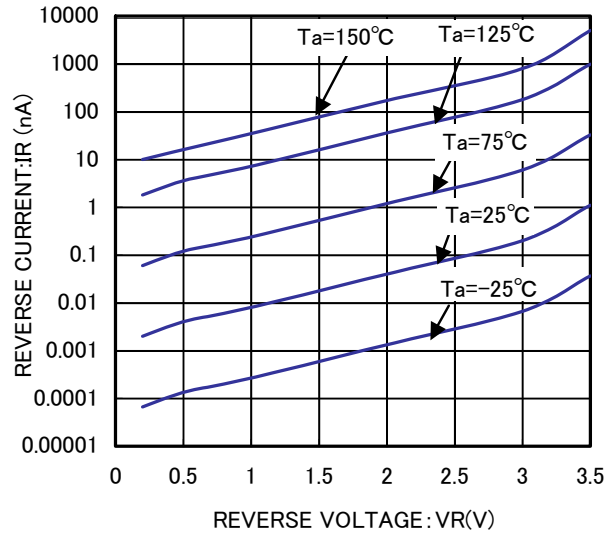


Fig-2 V_R - I_R CHARACTERISTICS

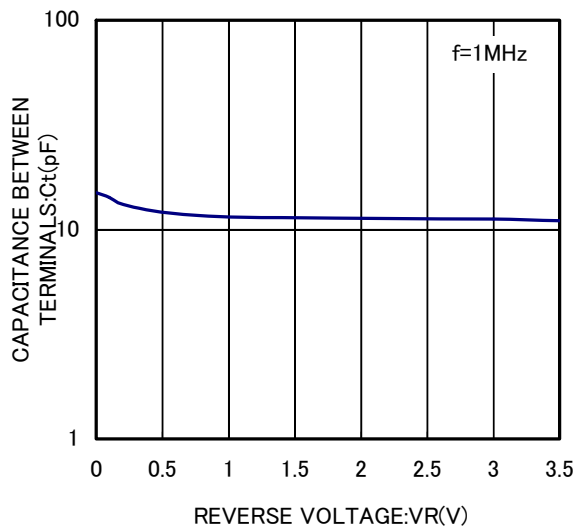
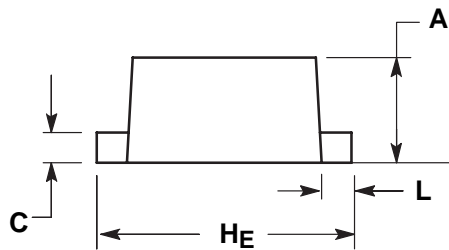
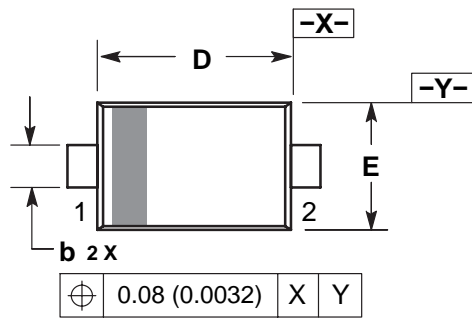


Fig-3 V_R - C_t CHARACTERISTICS

SOD-923 Outline Dimensions

Unit:mm



MILLIMETERS			
DIM	MIN	NOM	MAX
A	0.36	0.40	0.43
b	0.15	0.20	0.25
c	0.07	0.12	0.17
D	0.75	0.80	0.85
E	0.55	0.60	0.65
HE	0.95	1.00	1.05
L	0.05	0.10	0.15