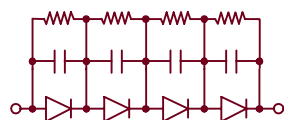
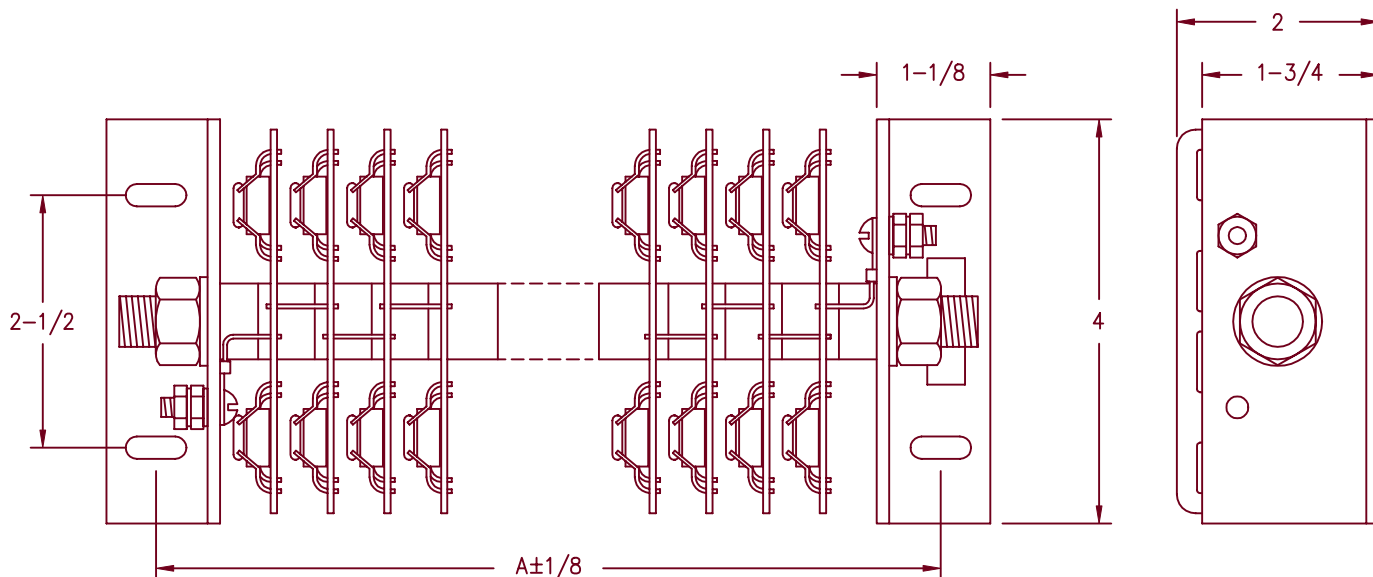
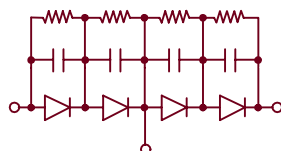


High Voltage Rectifier Assembly PHV6 Series



H = Halfwave



D = Doubler

Mounting: Horizontal (convection cooling)
Horizontal or vertical (forced air or oil)
DC output rating—6 Amps/25°C convection cooled
10 Amps/40°C forced air cooled
@ 1000 LFM
15 Amps/40°C oil cooled
Peak Reverse voltage— from 8KV to 80KV

CATALOG NUMBER	PRV RATING KV	DIMENSION A
PHV6*08	8	3-1/8
PHV6*12	12	3-5/8
PHV6*16	16	4-1/4
PHV6*20	20	4-3/4
PHV6*24	24	5-3/8
PHV6*28	28	5-7/8
PHV6*32	32	6-1/2
PHV6*36	36	7
PHV6*40	40	7-5/8
PHV6*44	44	8-1/8
PHV6*48	48	8-3/4
PHV6*52	52	9-1/4
PHV6*56	56	9-7/8
PHV6*60	60	10-3/8
PHV6*64	64	11
PHV6*68	68	11-1/2
PHV6*72	72	12-1/8
PHV6*76	76	12-5/8
PHV6*80	80	13-1/4

*Add H or D For doublers add 1" to both dimensions A

- Single Phase Halfwave Or Doubler
- Gold Iridited Aluminum Heatsinks
- Each Diode is R-C Compensated
- 400 Amperes Surge Current (1 Cycle)
- Resistive - Inductive Load. Derate 20% for Capacitive Loads

3-12-01 Rev. IR

PHV6

