

The KK-0332-30 filter has a "PI" common mode configuration and an "L" differential configuration. This is an economical filter for power supplies and systems with requirements such as EN55022 or FCC in an industrial environment.

The inductor in the ground line is very useful for breaking up high frequency ground loops where systems are interconnected through data lines, monitoring equipment etc.

These ground loops can cause difficulties with both conducted and radiated emissions.

This filter will also function in 400 Hz systems.

Operating Voltage= 250/440 Vac

Operating Current Max= 30 amp/Ph

Operating Frequency= 50—60 Hz

Operating Voltage= 115/250 Vac, 50—400 Hz

Temperature Range= -20 to 50 deg. C

Diel. Withstand (Line to Case)= 1500V~ for 1 Min

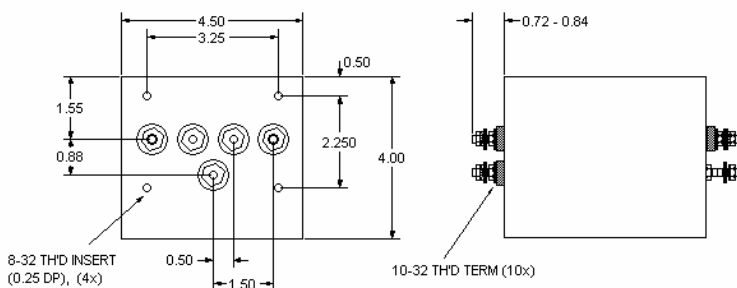
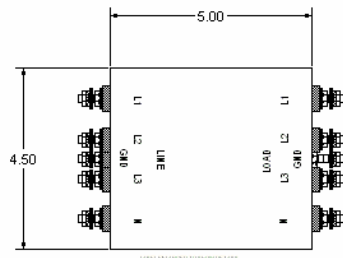
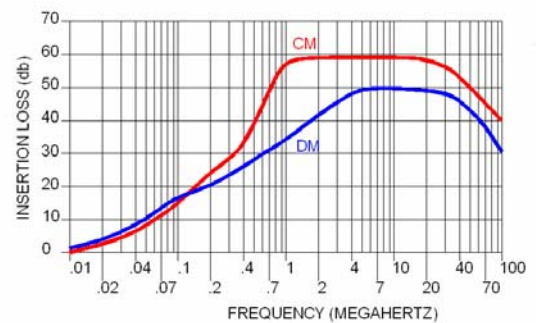
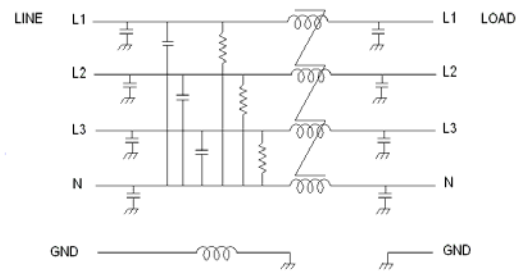
Diel. Withstand (Line to Line)= 1500Vdc for 1 min

Leakage Current = 2.0 mA @ 250 VAC, 60Hz

Discharge after 5.0 sec.= 34V Max

Agency Approvals = UL

Order part number KK-0332-30



USA JMK Inc 15 Caldwell Dr. Amherst, NH 03031 PH: 603 886-4100 FX: 603 886-4115

email: [info@jmkfilters.com](mailto:info@jmkfilters.com)

EUR JMK Inc Glasgow G13 1DN Scotland UK PH: 44-(0) 7785310729 FX: 44-(0) 141 589 1884