

*New Jersey Semi-Conductor Products, Inc.*

20 STERN AVE.  
 SPRINGFIELD, NEW JERSEY 07081  
 U.S.A.

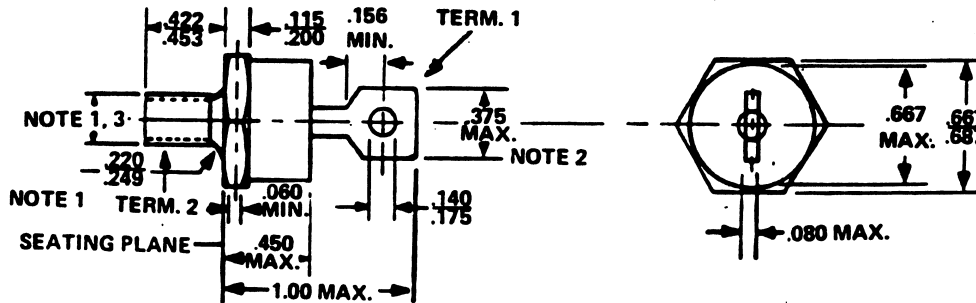
TELEPHONE: (973) 376-2922  
 (212) 227-6005  
 FAX: (973) 376-8960

PARAMETERS

1N3321B  
 REF/REG DIODE, 10W < P(D)

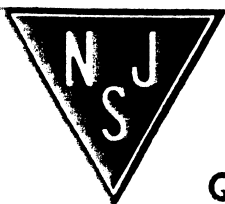
Description: Ref/Reg Diode, 10W < P(D)  
 Manufacturer.....  
 Mil/High-Rel? (Y/N).....  
 Nom. Ref. Volt..... 24  
 Test Current..... 520m  
 Tol. (%)..... 5  
 PD Max. (W)..... 50  
 Dyn. Zmax (j)..... 2.6  
 Temp Coef pp/10k.....  
 Oper. Temp (x°C) Max..... 175u  
 Pkg Style..... StR-1/4  
 Surface Mounted (Y/N)..... N

u Junction Temperature 2 It(rms)



NOTES:

1. COMPLETE THREADS TO EXTEND TO WITHIN 2-1/2 THREADS OF SEATING PLANE.
2. ANGULAR ORIENTATION OF THIS TERMINAL IS UNDEFINED.
3. 1/4-28 UNF-2A. MAXIMUM PITCH DIAMETER OF PLATED THREADS SHALL BE BASIC PITCH DIAMETER (.2268", 5.74 MM) REF. (SCREW THREAD STANDARDS FOR FEDERAL SERVICES 1957) HANDBOOK H28 1957 P1.
4. MINIMUM FLAT.



Quality Semi-Conductors