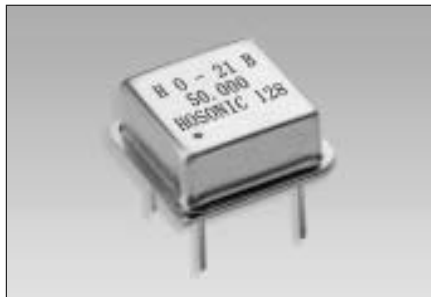


HALF SIZE CLOCK OSCILLATORS TTL COMPATIBLE

• HO-21 Series



The HO-21 series oscillator is TTL compatible and features fast rise/fall times with high reliability at low cost. The metal package with pin#4 case ground acts as shielding to minimize EMI radiation.

FEATURES

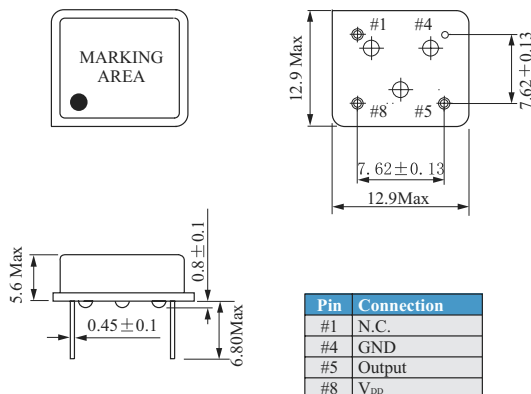
- 10TTL Output Load
- 8 Pin Half Size
- Industry Standard
- Wide Frequency Range
- Low Cost
- Resistance Weld Package

Electrical Specifications

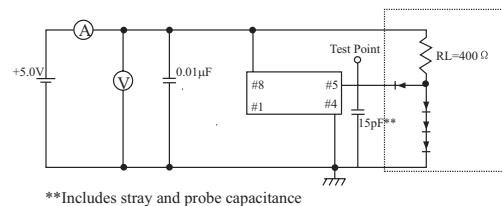
| Parameter | Condition | HO-21 | |
|-----------------------------|------------------|------------------------------|-----------------------|
| Frequency Range | F ₀ | 0.5MHz~100.00MHz | |
| Frequency Stability* | All Condition* | ± 25ppm, ± 50ppm, ± 100ppm | |
| Operating Temperature Range | T _{OPR} | 0°C~70°C(-40°C~+85°C option) | |
| Storage Temperature Range | T _{STG} | -55°C~+125°C | |
| Power supply Voltage | V _{DD} | 5.0V+/-10% | |
| Aging(First Year) | 25°C ± 3°C | ± 5ppm | |
| Supply Current | I _{DD} | 0.5MHz to 23.999MHz | 15mA Max |
| | | 24.000MHz to 69.999MHz | 30mA Max |
| | | 70.000MHz to 100.000MHz | 60mA Max |
| Output Symmetry | Sym | At 1.4V | 40/60%(45/55% Option) |
| Rise time | T _r | 0.4V~2.4V | 5 nS Max |
| Fall Time | T _f | 2.4V~0.4V | 5 nS Max |
| Output Voltage | V _{OH} | | 2.4 Vmin |
| | V _{OL} | | 0.4 Vmax |
| Output load | TTL Load | | 1~10TTL |
| Start-up Time | T _s | | 10mS Max |

*Include: 25°C tolerance, operating temperature range, input voltage change, aging, load change, shock and vibration

Mechanical Dimensions(mm)



TTL Test Circuit



TTL Output Waveform

