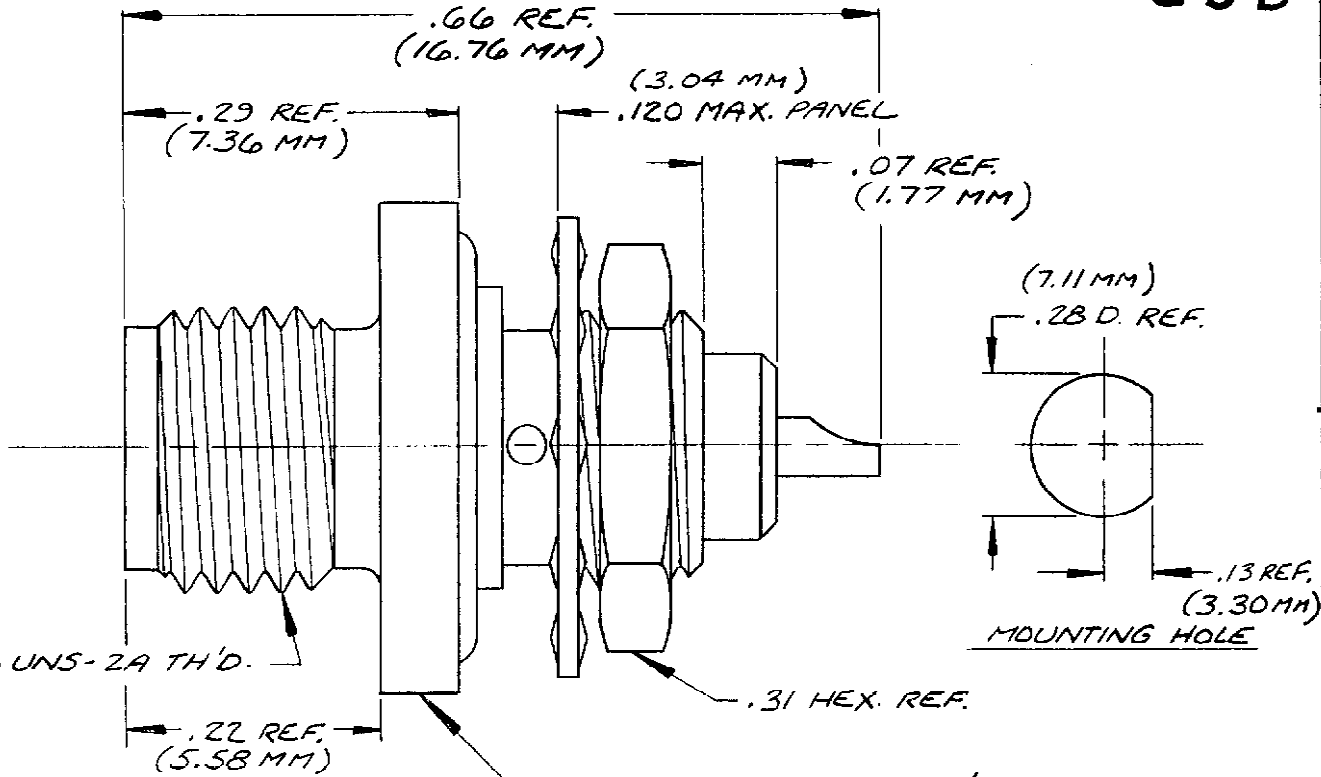


DASH NO M CODE MADE FROM

GSD

M39012/61-3002



| REVISIONS |                                    |
|-----------|------------------------------------|
| ISSUE     | CHANGES                            |
| 2         | CN 24943 E<br>GJG 23 AUG 83        |
| 3         | CN 26034 C<br>AJ 12 APRIL 84       |
| 4         | CN 32323 A<br>LNM 25 JUN 90        |
| F         | REVISED PER<br>ER14214<br>03/10/09 |

GSD

|   |
|---|
| SCALE: 6:1                              |
| APPROX. SURFACE AREA:<br>874-11-3       |
| USED ON:                                |
| REF:                                    |
| SMA BULKHEAD<br>RECEPTACLE (FRONT MTG.) |
| DRAWN GL DATE 10 JAN 84                 |
| APPR. MJB DATE 11 JAN 84                |

NOTES:

1. STAMP: 91836 M39012/61-3002  
XXXX (DATE CODE)

2. MATERIALS:

- CENTER CONTACT - BERYLLIUM COPPER, QQ-C-530.
- BODY, HEX NUT, & LOCKWASHER - STAINLESS STEEL, 303 FM.
- O-RING - SILICONE RUBBER, ZZ-R-765.
- INSULATOR - TEFLON, L-P-403.
- EPOXY (FOR INSULATOR & CONTACT RETENTION) - VARY FLEX.

3. FINISHES:

- CENTER CONTACT - HARD GOLD PLT., PER MIL-G-95204.
- ALL OTHER METAL PARTS - PASSIVATED PER QQ-P-35.

4. ELECTRICAL CHARACTERISTICS:

- NOMINAL IMPEDANCE - 50Ω
- FREQUENCY RANGE - DC TO 12.4 GHz

UNLESS OTHERWISE SPECIFIED:

- TOLERANCES: FRACTIONS & 2 PLACE DECIMALS ± .010  
3 PLACE DECIMALS ± .004 ANGLES ± 0°30'
- REMOVE ALL BURRS, BREAK SHARP EDGES .005 MAX.
- NO FILLETS PERMITTED.
- SURFACE ROUGHNESS 63 MICROINCHES RMS MAX.
- ALL DIMENSIONS PRIOR TO PLATING.
- ALL PLATING IN ACCORDANCE WITH KER 10004.

GSD M39012/61-3002

**KINGS**  
by WINCHESTER  
ELECTRONICS