

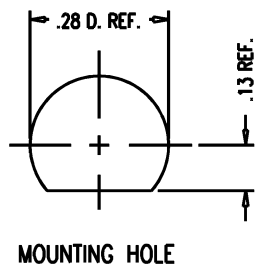
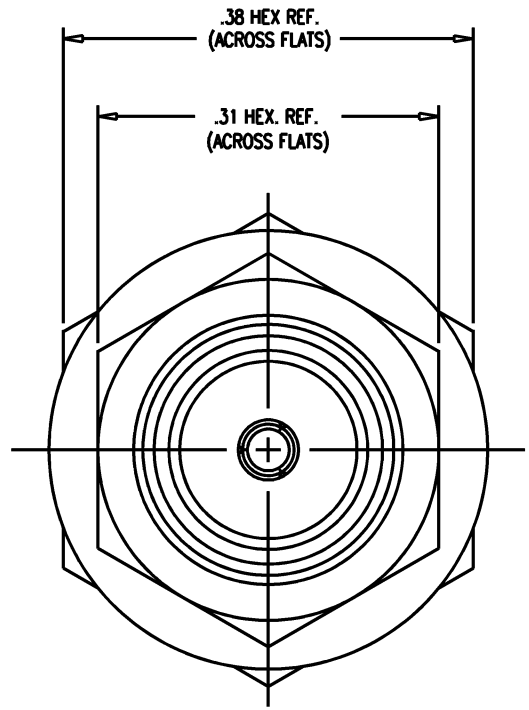
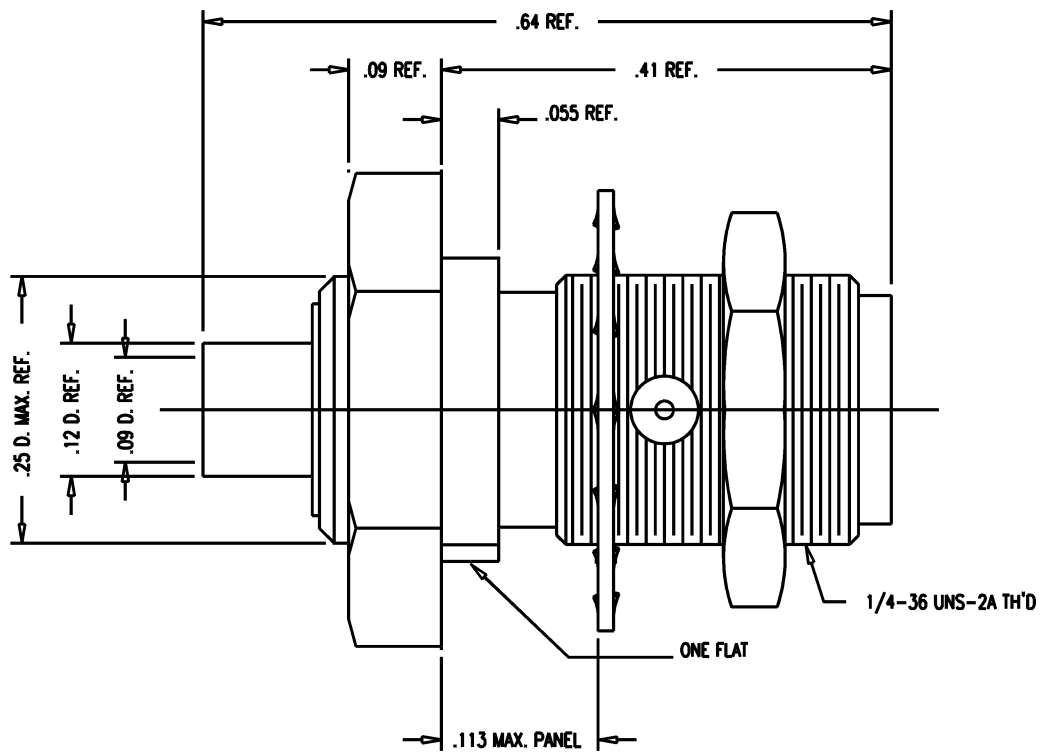
DASH NO.	M CODE	MADE FROM
----------	--------	-----------

GSD

872-57-3

REVISIONS

ISSUE	CHANGES
0	ER 38520 BDH 03/13/02
1	CN 38629 E TML 08/21/02



- NOTES:**
- FOR USE WITH RG-405/U (.085 S.R.) CABLE.
 - FOR CABLING INSTRUCTIONS SEE 3-481.
 - INTERFACE PER MIL-STD-348, FIG. 310-2.
 - MATERIALS:
INSULATOR: ASTM-D-4894
CENTER CONTACT: BER. COP., ASTM-B-196
ALL OTHER PARTS: STAINLESS STEEL, 303
 - FINISHES:
SOLDER BODY } HARD GOLD PLT. PER MIL-G-45204
CENTER CONTACT }
ALL OTHER METAL PARTS: PASSIVATE PER QQ-P-35
 - ELECTRICAL CHARACTERISTICS:
NOMINAL IMPEDANCE: 50 OHMS
FREQUENCY RANGE: DC TO 18 GHz
 - MARK PACKAGE: KINGS 872-57-3
YRWK (DATE CODE)

SCALE	8:1		
APPROX SURFACE AREA			
USED ON	K-8881		
REF:	BOEING		
JACK, BULKHEAD, SMA			
DRAWN	BDH	DATE	03/13/02
DESIGN	BDH	DATE	03/13/02
APPR.		DATE	

KINGS
ELECTRONICS CO., INC.
ROCK HILL, SOUTH CAROLINA 29730

GSD

872-57-3