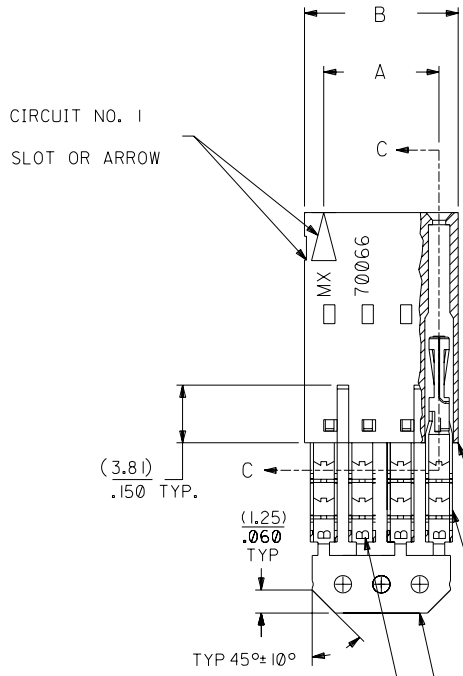
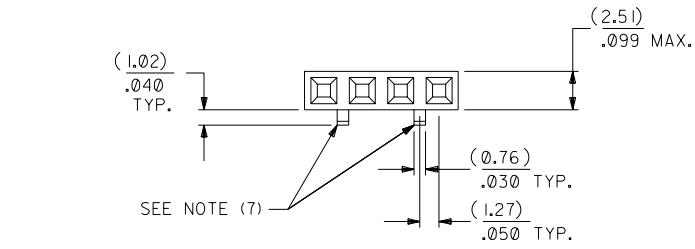


# OPTION D

## NOTES:

- 1) TO BE USED WITH (26) AWG. STRANDED WIRE WITH (1.35)/.053 DIA. MAX. INSULATION.
- 2) SEE CHART FOR CIRCUIT SIZES.
- 3) STANDARD PACKAGING PER PK-70873-0001. OPTIONAL PACKAGING MAY BE AVAILABLE, REQUEST DWG. PK-70400
- 4) PARTS STACKABLE END TO END ON (2.54)/.100 CENTERS.
- 5) REFER TO PRODUCT SPECIFICATION: PS-70400.
- 6) SEE DWG. SDA-70400-\*\*\*\* (SHT. 5) FOR OPTIONAL HOUSING DETAILS.
- 7) 4 CIRCUIT SHOWN. 3 - 25 CKT'S. HAVE (2) RIBS.
- 8) TO MATE WITH MOLEX PART NO'S.: 70004-\*\*\*\*, 70013-\*\*\*\*

9) 2 CIRCUIT ASSEMBLIES SUPPLIED AS GROUPED PAIRS.



I.D. SLOT CODE TO WIRE GAUGE CHART	
I.D. SLOT CODE	WIRE GAUGE
B	26 AWG.

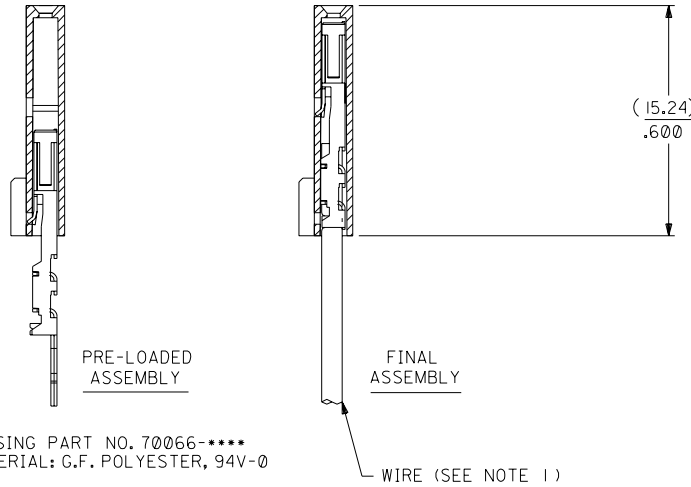
PLATING CODE (STRIPE ON CARRIER STRIP)	
PLATING	COLOR
15 GOLD	YELLOW

15 GOLD - .000015 MIN. GOLD IN SELECT AREA WITH .000075 MIN. TIN IN SELECT AREA OVER .000050 MIN. NICKEL OVER-ALL.

\*THE PRIMARY SHIPPING CARTON WILL BE LABELED "COMPLIANT TO ROHS DIRECTIVE 2002/95/EC AND ELV ANNEX II OF DIRECTIVE 2000/53/EC". CARTONS WITHOUT THIS LABEL MAY CONTAIN PRODUCT WITH LEAD.



## SECTION C-C



CKT. SIZE	A	B	EDP. NO.	ENG. NO.
2	( 2.54 ) .100	( 5.05 ) .199	14-56-3027	A-70400-0771
3	( 5.08 ) .200	( 7.59 ) .299	14-56-3037	A-70400-0772
4	( 7.62 ) .300	( 10.13 ) .399	14-56-3047	A-70400-0773
5	( 10.16 ) .400	( 12.67 ) .499	14-56-3057	A-70400-0774
6	( 12.70 ) .500	( 15.21 ) .599	14-56-3067	A-70400-0775
7	( 15.24 ) .600	( 17.75 ) .699	14-56-3077	A-70400-0776
8	( 17.78 ) .700	( 20.29 ) .799	14-56-3087	A-70400-0777
9	( 20.32 ) .800	( 22.83 ) .899	14-56-3097	A-70400-0778
10	( 22.86 ) .900	( 25.37 ) .999	14-56-3107	A-70400-0779
11	( 25.54 ) 1.000	( 27.91 ) 1.099	14-56-3117	A-70400-0780
12	( 27.94 ) 1.100	( 30.45 ) 1.199	14-56-3127	A-70400-0781
13	( 30.48 ) 1.200	( 32.99 ) 1.299	14-56-3137	A-70400-0782
14	( 33.02 ) 1.300	( 35.53 ) 1.399	14-56-3147	A-70400-0783
15	( 35.56 ) 1.400	( 38.07 ) 1.499	14-56-3157	A-70400-0784
16	( 38.01 ) 1.500	( 40.61 ) 1.599	14-56-3167	A-70400-0785
17	( 40.64 ) 1.600	( 43.15 ) 1.699	14-56-3177	A-70400-0786
18	( 43.18 ) 1.700	( 45.69 ) 1.799	14-56-3187	A-70400-0787
19	( 45.72 ) 1.800	( 48.23 ) 1.899	14-56-3197	A-70400-0788
20	( 48.26 ) 1.900	( 50.77 ) 1.999	14-56-3207	A-70400-0789
21	( 50.80 ) 2.000	( 53.31 ) 2.099	14-56-3217	A-70400-0790
22	( 53.34 ) 2.100	( 55.85 ) 2.199	14-56-3227	A-70400-0791
23	( 55.88 ) 2.200	( 58.39 ) 2.299	14-56-3237	A-70400-0792
24	( 58.42 ) 2.300	( 60.93 ) 2.399	14-56-3247	A-70400-0793
25	( 60.96 ) 2.400	( 63.47 ) 2.499	14-56-3257	A-70400-0794

REV. NO.	DATE	BY	REVISIONS
D			REVISED PER ECR NO. U82110 10-17-88 AAB
E			LEAD FREE UCP2004-1769 RWHITE 04/03/17
DI			ADD CARRIER CHAMF ECR# U80110 05/20/98 LMCGRATH
			REDRAWN ON CAD ECR# 8842 5/8/86 W.Z.

DIMENSIONS SHOWN (METRIC) INCH	
UNLESS OTHERWISE SPECIFIED TOLERANCES: ANGULAR ± 1/2°	
3 PLACE	± .010
2 PLACE	± .014 ± 0.25
1 PLACE	± 0.35

TITLE		REVISE ONLY ON CAD SYSTEM	
ASSEMBLY, SL CONNECTOR (SINGLE ROW- (2.54)/.100 GRID)			
MOLEX INCORPORATED		SHEET NO.	DATE
LITSE,ILL. 60532		U.S.A.	10/10/84
PART NO. SDA-70400-0771-0794		DRWG. NO.	
SEE CHART			
FILE NAME	THIS DRAWING CONTAINS INFORMATION THAT IS PROPRIETARY TO MOLEX INC. AND SHOULD NOT BE USED WITHOUT WRITTEN PERMISSION.	DIV.	SIZE
S70400DX5		DA	C

MFG. SH. REV.

70400