

## FEATURES AND SPECIFICATIONS

### Features and Benefits

- Snap-in peg locks header to PCB during soldering process
- Fully polarized to mating receptacle

### Reference Information

Product Specification: PS-43650  
 Packaging: Tray  
 UL File No.: E29179  
 CSA File No.: LR19980  
 TUV License No.: R95107  
 Mates With: 43645  
 Designed In: Millimeters

### Electrical

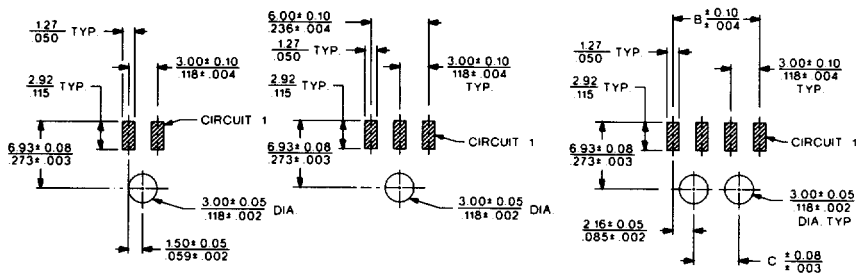
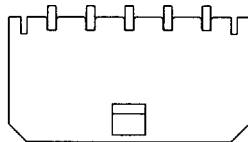
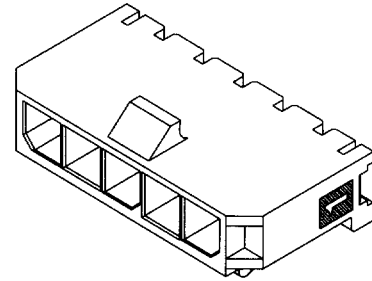
Voltage: 250V  
 Current: 5.0A max.  
 Contact Resistance: 10mΩ max.  
 Dielectric Withstanding Voltage: 1500V AC  
 Insulation Resistance: 1000 MΩ min.

### Physical

Housing: High temperature LCP, UL 94V-0  
 Contact: Phosphor Bronze  
 Plating: Tin or Gold

# molex® 3.00mm (.118") Pitch Micro-Fit 3.0™ Wire-to-Board Header

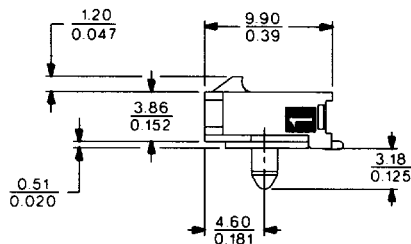
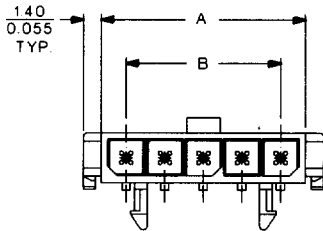
## 43650 Single Row Right Angle, SMT With Snap Peg



2 CIRCUIT  
 (RT ANGLE SMT  
 W/MOLDED PEG)

3 CIRCUIT  
 (RT ANGLE SMT  
 W/MOLDED PEG)

4-12 CIRCUIT  
 (RT ANGLE SMT  
 W/MOLDED PEG)



## ORDERING INFORMATION AND DIMENSIONS

Circuits	Order No.			Dimension			Overall Height When Mated With:	
	Tin	15µ" Gold	30µ" Gold	A	B	C	43645	6.98 (.275)
2	43650-0206	43650-0207	43650-0208	6.85 (.270)	3.00 (.118)		43645	6.98 (.275)
3	43650-0306	43650-0307	43650-0308	9.85 (.388)	6.00 (.236)		43645	6.98 (.275)
4	43650-0406	43650-0407	43650-0408	12.85 (.506)	9.00 (.354)	4.70 (.185)	43645	6.98 (.275)
5	43650-0506	43650-0507	43650-0508	15.85 (.624)	12.00 (.472)	7.70 (.303)	43645	6.98 (.275)
6	43650-0606	43650-0607	43650-0608	18.85 (.742)	15.00 (.591)	10.70 (.421)	43645	6.98 (.275)
7	43650-0706	43650-0707	43650-0708	21.85 (.860)	18.00 (.709)	13.70 (.539)	43645	6.98 (.275)
8	43650-0806	43650-0807	43650-0808	24.85 (.978)	21.00 (.827)	16.70 (.657)	43645	6.98 (.275)
9	43650-0906	43650-0907	43650-0908	27.85 (1.096)	24.00 (.945)	19.70 (.776)	43645	6.98 (.275)
10	43650-1006	43650-1007	43650-1008	30.85 (1.215)	27.00 (1.063)	22.70 (.894)	43645	6.98 (.275)
11	43650-1106	43650-1107	43650-1108	33.85 (1.333)	30.00 (1.181)	25.70 (1.012)	43645	6.98 (.275)
12	43650-1206	43650-1207	43650-1208	36.85 (1.451)	33.00 (1.299)	28.70 (1.130)	43645	6.98 (.275)