

FEATURES

- ◆ High Efficiency up to 81%
- ◆ 6KVDC Isolation
- ◆ DIP Package
- ◆ Low Isolation capacitance
- ◆ Temperature Range -40°C to +85°C
- ◆ No Heat Sink Require
- ◆ Internal SMD Construction
- ◆ No External Component Required
- ◆ Continuous short circuit protection
- ◆ Industry Standard Pinout
- ◆ RoHS Compliance

MODEL SELECTION

G^① 05^② 05^③ X^④ D^⑤ -2W^⑥

- ① Product Series
- ② Input Voltage
- ③ Output Voltage
- ④ Package Style
- ⑤ DIP Package
- ⑥ Rated Power

APPLICATIONS

The G_XD-2W & H_XD-2W Series are specially designed for applications where a group of polar power supplies are isolated from the input power supply in a distributed power supply system on a circuit board.

These products apply to:

- 1) Where the voltage of the input power supply is fixed (voltage variation $\leq 10\%$);
- 2) Where isolation is necessary between input and output (isolation voltage $\leq 6000\text{VDC}$);
- 3) Where the regulation of the output voltage and the output ripple noise are not demanded.

Such as: purely digital circuits, ordinary low frequency analog circuits, and IGBT power device driving circuits.



CE REACH

MICRODC reserves the copyright

PRODUCT PROGRAM

Part Number	Input		Output			Efficiency (% Typ)	Certificate		
	Voltage (VDC)		Voltage (VDC)	Current (A)					
	Nominal	Range		Max	Min				
H0505XD-2W	5	4.5-5.5	5	400	40	75	UL		
H0509XD-2W			9	222	23	76	UL		
H0512XD-2W			12	167	17	78	UL		
H0515XD-2W			15	133	13	77	UL		
G0505XD-2W			± 5	± 200	± 20	75	UL		
G0509XD-2W			± 9	± 111	± 12	77	UL		
G0512XD-2W			± 12	± 84	± 9	79	UL		
G0515XD-2W			± 15	± 67	± 7	78	UL		
H1205XD-2W			12	10.8-13	5	400	40	75	UL
H1209XD-2W					9	222	23	78	UL
H1212XD-2W	12	167			17	80	UL		
H1215XD-2W	15	133			14	78	UL		
G1205XD-2W	± 5	± 200			± 20	76	UL		
G1209XD-2W	± 9	± 111			± 12	78	UL		
G1212XD-2W	± 12	± 84			± 9	80	UL		
G1215XD-2W	± 15	± 67			± 7	78	UL		
H2405XD-2W	24	21.6-26.4			5	400	40	77	
H2409XD-2W					9	222	23	78	
H2412XD-2W			12	167	17	81			
H2415XD-2W*			15	133	14	80			
G2405XD-2W*			± 5	± 200	± 20	77			
G2409XD-2W*			± 9	± 111	± 12	78			
G2412XD-2W*			± 12	± 84	± 9	81			
G2415XD-2W*			± 15	± 67	± 7	80			

*Designing.

Note: The G_XD-1W/H_XD-1W series also are available in our company.

ISOLATION SPECIFICATIONS

Item	Test conditions	Min.	Typ.	Max	Unit
Isolation voltage	Tested for 1 minute and 1mA max	6000			VDC
Isolation resistance	Test at 500VDC	1000			M Ω
Isolation capacitance			3.5		PF

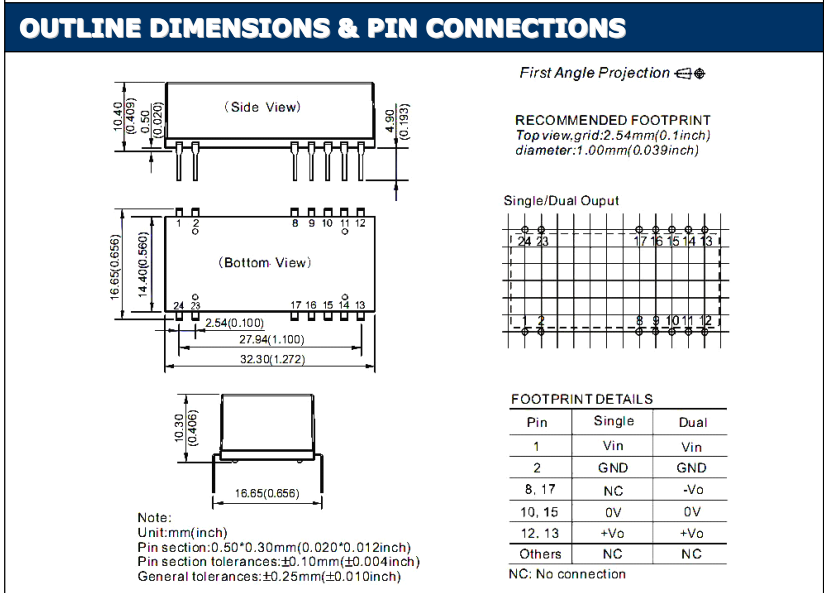
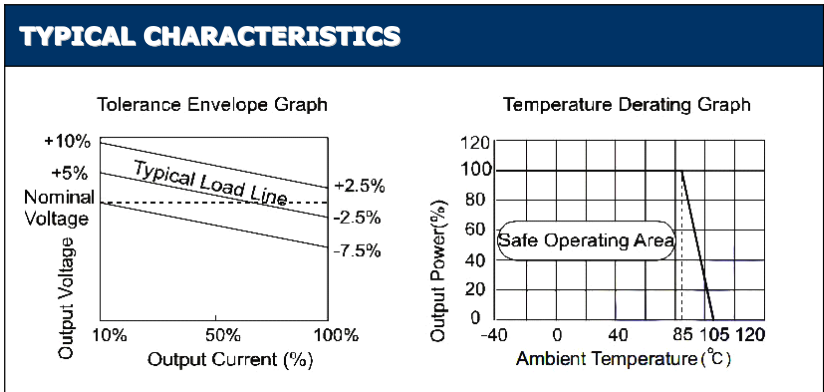
COMMON SPECIFICATIONS

Item	Test conditions	Min	Typ.	Max	Unit
Storage humidity				95	%
Operating temperature		-40		85	°C
Storage temperature		-55		125	
Temp. rise at full load			15	30	
Lead temperature	1.5mm from case for 10 seconds			300	
Short circuit protection		Continuous			
Cooling		Free air convection			
Case material		Plastic(UL94-V0)			
MTBF		3500			K hours
Weight			8.2		g

OUTPUT SPECIFICATIONS					
Item	Test conditions	Min.	Typ.	Max.	Units
Output power		0.2		2	W
Line regulation	For Vin change of 1%			±1.2	
Load regulation	10% to 100% load	5V output	10	15	%
		9V output	8.3	15	
		12V output	6.8	15	
		15V output	6.3	15	
Output voltage accuracy		See tolerance envelope graph			
Temperature drift	100% full load			0.03	%/°C
Ripple & Noise*	20MHz Bandwidth		150	250	mVp-p
Switching frequency	Full load, nominal input	5V input	35		KHz
		12V,24V input	50		

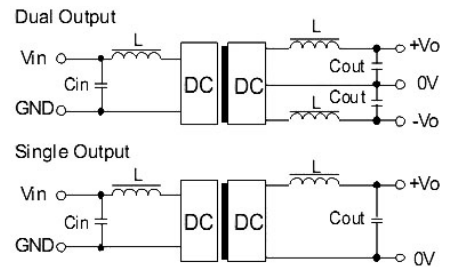
*Test ripple and noise by "parallel cable" method. See detailed operation instructions at Testing of Power Converter section, application notes.

Note: Dual output models unbalanced load: ±5%



Recommended testing and application circuit

If you want to further decrease the input/output ripple, an "LC" filtering network may be connected to the input and output ends of the DC/DC converter, see (Figure 1).



(Figure 1)

It should also be noted that the inductance and the frequency of the "LC" filtering network should be staggered with the DC/DC frequency to avoid mutual interference. However, the capacitance of the output filter capacitor must be proper. If the capacitance is too big, a startup problem might arise. For every channel of output, provided the safe and reliable operation is ensured, the greatest capacitance of its filter capacitor sees (Table 1).

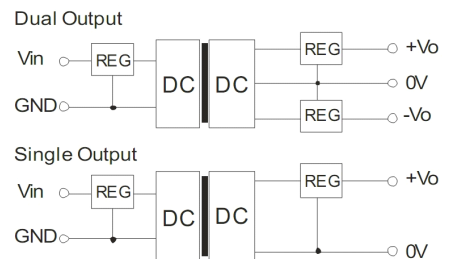
EXTERNAL CAPACITOR TABLE (Table 1)

Vin (VDC)	Cin (μF)	Single Vout (VDC)	Cout (μF)	Dual Vout (VDC)	Cout (μF)
5	4.7	5	10	±5	4.7
12	2.2	9	4.7	±9	2.2
24	1	12	2.2	±12	1
--	--	15	1	±15	1

It's not recommend to connect any external capacitor in the application field with less than 0.5 watt output.

Output Voltage Regulation and Over-voltage Protection Circuit

The simplest device for output voltage regulation, over-voltage and over-current protection is a linear voltage regulator with overheat protection that is connected to the input or output end in series (Figure 2).



(Figure 2)

Overload Protection

Under normal operating conditions, the output circuit of these products has no protection against overload. The simplest method is to connect a self-recovery fuse in series at the input end or add a circuit breaker to the circuit.

No parallel connection or plug and play.

Note:

1. All specifications measured at Ta=25°C, humidity<75%, nominal input voltage and rated output load unless otherwise specified.
2. Only typical models listed, other models may be different, please contact our technical person for more details.
3. Operation under minimum load will not damage the converter; However, they may not meet all specification listed.

MICRODC
Professional Power Module

Microdc Professional Power Module, Inc.
Tel:0086-20-86000646 E-mail:tech@microdc.cn
Website:http://www.microdc.cn

RoHS
MICRODC Green Policy

RoHS COMPLIANT INFORMATION

This series is compatible with RoHS soldering systems with a peak wave solder temperature of 300° C for 10 seconds.
The pin termination finish on the SIP package type is Tin Plate, Hot Dipped over Matte Tin with Nickel Preplate. The DIP types are Matte Tin over Nickel Preplate. Both types in this series are backward compatible with Sn/Pb soldering systems.

REACH

REACH COMPLIANT INFORMATION

This series has proven that this product does not contain harmful chemicals, it also has harmful chemical substances through the registration, inspection and approval.